

Clinical Photo

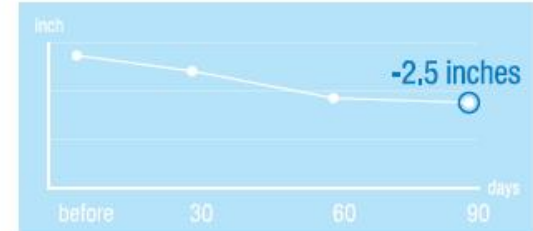
Clatuu - Treatment

Clinical Cases

Abdoman & Love Handles



Post 90 days **34/ Female / -2.5 inches**



Baseline



Post 45 days



Post 90 days

Clinical Cases

Love Handles



Post 90 days 31/Female / -3.5 inches



Baseline



Post 45 days



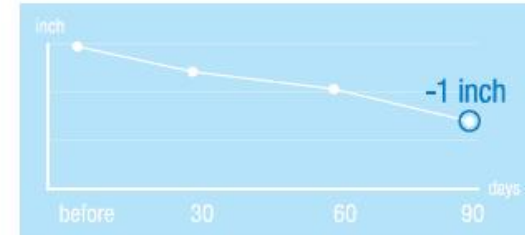
Post 90 days

Clinical Cases

Arms



Post 90 days **26/ Female / -1 inch**



Baseline



Post 45 days



Post 90 days



Baseline



Post 3 months

- ▶ Age: 41 (Female) • Normal Applicator 1 hr Right Arm
- ▶ Cooling 4 Level, suction 4 Level

Clinical Cases

Thighs



Baseline



Post 45 days

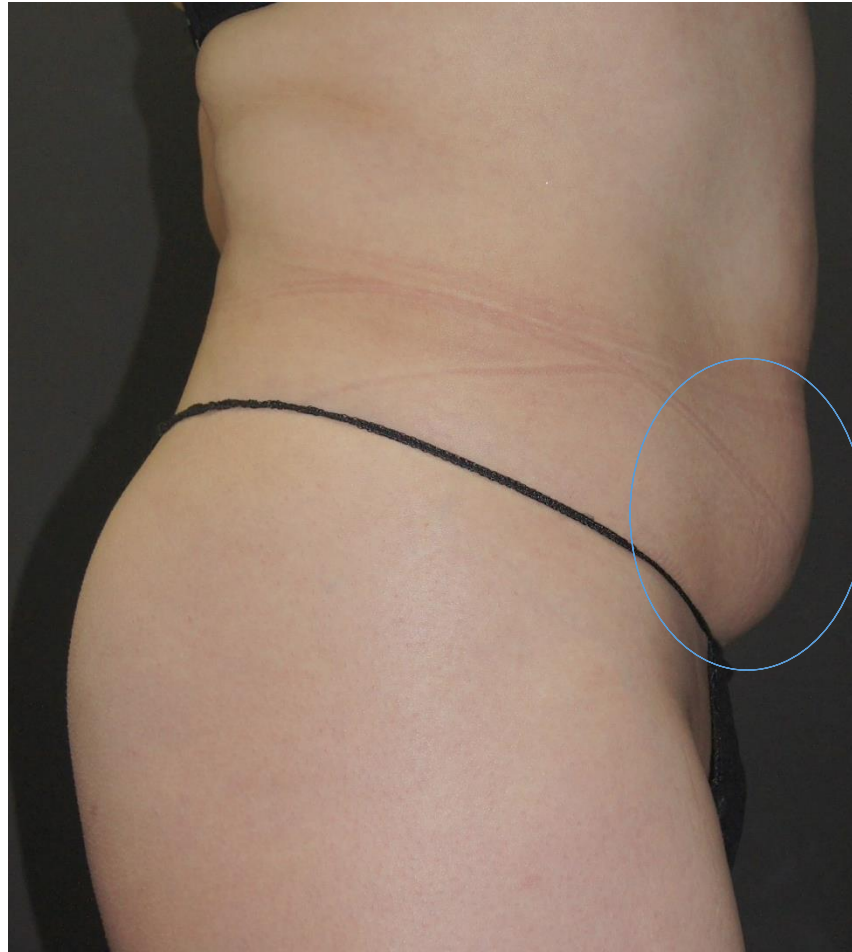


Post 90 days

Receptionist #2



baseline



2m



Baseline



Post 3 months

- ▶ Age: 41 (Female) • Normal Applicator 1 hr left Flank
- ▶ Cooling 4 Level, suction 4 Level



Baseline

Post 3 months

- ▶ Age: 45 (male) • Normal Applicator 1 hr
- ▶ Cooling 4 Level, suction 4 Level



Baseline

Post 3 months

- ▶ Age: 45 (male) • Normal Applicator 1 hr
- ▶ Cooling 4 Level, suction 4 Level

Thank you.