



## SET UP GUIDE

Open lid of the filter on top of the main body and open the cap.



Place the prepared cotton ball filter and close the cap.



Place the injector in the holder on the main body. Connect the injector to the socket on the side of the body.



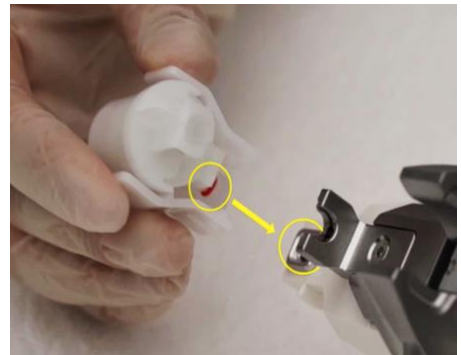
Connect power cable and plug into outlet. Turn on the power switch.



Open prepared filter.  
Install the filter into the filter groove on the right side of the injector.



Prepare the disposable multi needle  
Align the injector vacuum hole with the multi needle vacuum hole then press down from top to bottom until it clicks.



When installation of multi needle is complete remove the safety guard.



Press the move back button on the back of the injector to position the syringe holder backwards.



Position the syringe at the injector and push the end of the plunger downwards into the position holder.



Adjust to connect needle adapter to the multi needle hub through pressing the more forward button briefly



Ensure syringe and multi needle are engaged. Lightly adjust the direction of the syringe with your hand to ensure that the syringe is correctly connected to the multi needle connecting groove.



Tighten the hold down screw on the syringe holder until the syringe is snug against syringe holder.





# QUICK REFERENCE GUIDE

STEP 1	<ul style="list-style-type: none"> <li>• Cleanse treatment area</li> <li>• Apply Anaesthetic cream -topical numbing cream evenly throughout treatment area- apply plastic wrap if required</li> <li>• Wait 30 minutes – remove wrap</li> <li>• Wipe off anaesthetic cream</li> </ul>
STEP 2	<ul style="list-style-type: none"> <li>• Cleanse treatment area with alcohol swabs</li> <li>• Let alcohol dry before commencing treatment</li> <li>• To reduce risk of infection use hand sanitizer let alcohol dry completely.</li> </ul>
STEP 3	<ul style="list-style-type: none"> <li>• Divide the treatment area in half – left &amp; right. This allows operator to perform the procedure in order.</li> </ul> <p><b>Face:</b></p> <ul style="list-style-type: none"> <li>• Starting from the right cheek. In a stamping technique move your way along jawline moving you're your way up to under the eye.</li> </ul>
STEP 4	<ul style="list-style-type: none"> <li>• Proceed treatment slowly, keeping a regular interval between injection site.</li> </ul>
STEP 5	<ul style="list-style-type: none"> <li>• Continue treatment using a clean gauze, wipe treated area removing any pinpoint bleeding.</li> </ul>
STEP 6	<ul style="list-style-type: none"> <li>• Now move your way to the left side of the face</li> </ul>
STEP 7	<ul style="list-style-type: none"> <li>• Finishing on forehead</li> </ul>
STEP 8	<ul style="list-style-type: none"> <li>• Once treatment has finished moisten clean gauze pads in normal saline solution squeezing excess.</li> <li>• Gently wipe treatment area to remove direct blood.</li> <li>• SPF should be applied post treatment.</li> <li>• It is recommended to not apply anything directly onto skin 4 hours post treatment.</li> </ul>
Downtime	<ul style="list-style-type: none"> <li>• * Downtime varies depending on the patient's skin condition or the depth of injection, but usually the scab occurs the day after the procedure, and it takes about 3 to 7 days to disappear.</li> </ul>