

FILLMED

LABORATOIRES

LUXURY FACIALS

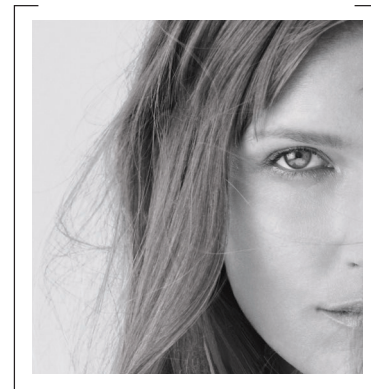
THE MOULIN ROUGE FACIAL (ANTI-RED, SENSITIVE SKIN)

- Open with Welcome FILLMED massage
- Cleanse oil cleanser
- Remove with micellar water on cotton rounds
- Perform skin assessment
- Use pre peel on cotton rounds, apply 3ml light peel with brush and leave for 3 minutes. Remove with FILLMED cleansing cloth and then use post peel on cotton rounds.
- Perform Hydra cryo serum Cryo massage if you have cooling device and cryo serums. Otherwise, cocktail HAB5 serum & AA lift serum. Use a light massage technique to work into the skin. Can also use Soon device as an alternative.
- Apply hyaluronic mask over the top. Use LED 15 minutes (red or IR), if no LED, perform a 10-15 minute massage with massage gel to the décolletage and arms.
- Work the remaining gel into skin and let it to soak in.
- Finish with HXR eye cream, a thin layer of Gr-Youth Mask (not massaging, just applying with hands like a moisturiser), and E youth Protect.



PARIS FACIAL (LUXURY FACIAL)

- Start with Fillmed Massage
- Cleanse with Oil Cleanser
- Remove with Micellar Water on cotton rounds
- Skin assessment
- Exfoliating cream soft massage (approx. 2-3 minutes) can add steam. Remove with water & hot towels or FILLMED cleansing cloth
- Pre peel; light or bright peel 3 minutes (covering lips, orbital bone with Vaseline), post peel. Can substitute peel for Glycopeel if client prefers. In this case, still use pre peel but not post - leave glycopeel for 10 minutes and remove with FILLMED cleansing cloth. **Please refer to the peels as exfoliating treatments and advise of slight tingling**
- Extractions if needed
- Cocktail 2-3 serums based on your clients needs (not boosters) and use brush to apply to skin (can apply sonophoresis or cryo/cooling device if you have) For an extra x dollars, leave the under eye area clean, and apply eye recovery mask to the area.
- Mix 1 tsp GR Youth Mask and 1 tsp modelling gel into a dish. (can pre-warm this in hot towel cabinet if desired).
- Perform 5-10 minute massage for a spa service or a shorter facial massage for more clinical.
- Over the top, use oil cleanser to work in the medium, then remove with hot towels or FILLMED cleansing cloth.
- Perfecting solution on cotton rounds to clean the skin
- Finish with HXR eye cream, B3 recovery, and e-youth protect



FILLMED
LABORATOIRES

A DIVISION OF THE CRYOMED GROUP IN AUSTRALIA AND NEW ZEALAND

1300 346 448 E: info@fillmed.com.au W: fillmed.com.au