



Clinical Education Guide

About Us

SkinQRI was founded by Amy Forman Taub, MD, FAAD, and James Bartholomeusz to deliver clear, conscious, and credible solutions for the world's most challenging skin concerns. Their first focus was the dramatic increase in hair loss and scalp health issues seen in dermatology. After six years of research and development, KeraFactor® was created.

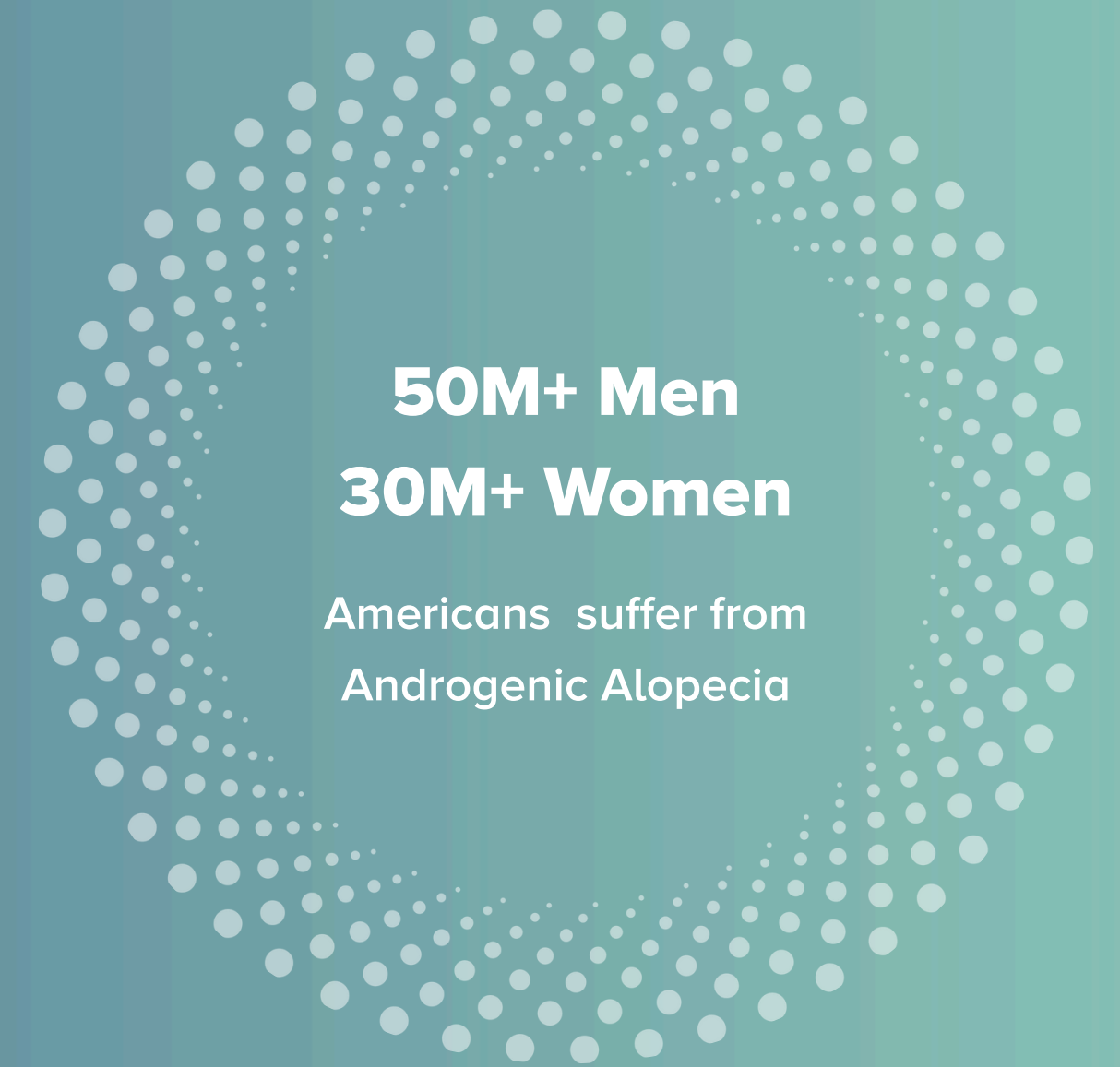
KeraFactor® combines innovative polypeptides, industry experience, and clinical research into a simple but effective line of products for hair loss and scalp health.



Elevate Your Practice With Root-to-Tip Solutions

Hair loss is one of the most frequent concerns dermatologists encounter in practice. As more patients actively seek solutions, the demand for reliable, results-driven treatments continues to rise.

Hair loss can be triggered by a range of factors, including genetics (such as androgenetic alopecia), hormonal shifts, underlying medical conditions, certain medications, and lifestyle influences.



Industry Leading Formulation

Science-backed formula with growth factors, peptides, and skin proteins to restore scalp health.

GROWTH FACTORS



Selected to target key growth factor deficiencies tied to hair loss and poor scalp health.

DRUG FREE



Free of drugs, hormones, sulfates, parabens, SLS, PGAs, fragrance, carcinogens and animal testing.

NANOLIPOSOME



Growth factors are individually wrapped in a carrier for enhanced absorption.

SAFE TO USE



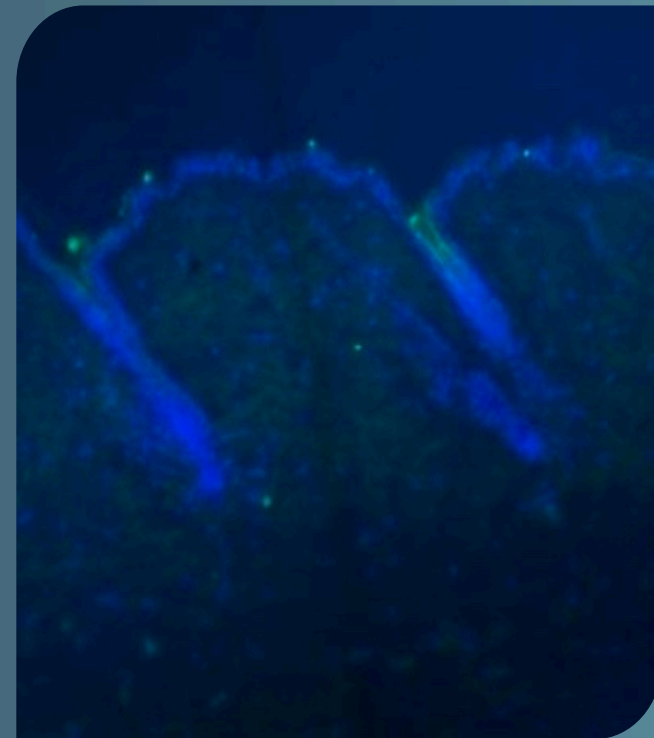
Suitable for all hair and skin types, and formulated for use by both men and women.

Growth Factors

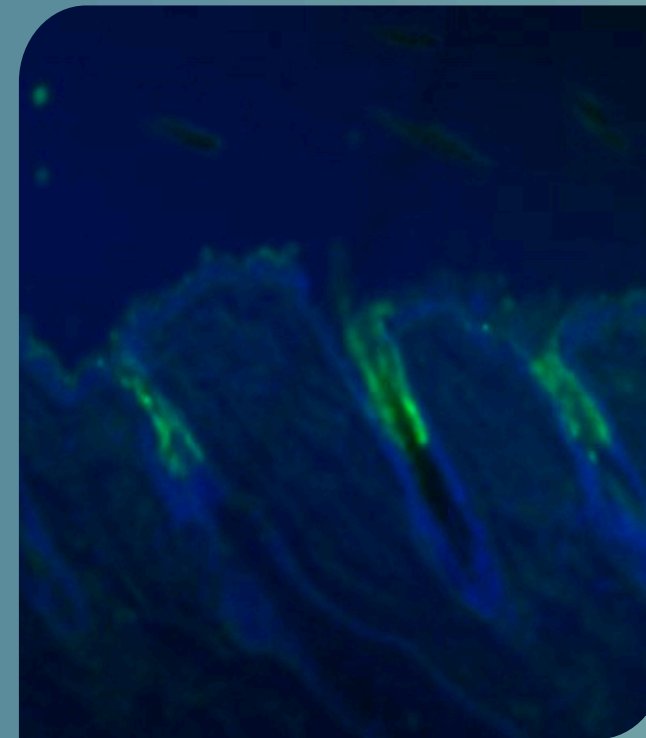
BIOMIMETIC

KeraFactor's growth factors are bio-engineered
100% synthetic, never sourced from plants, animals, or humans
Pure, precise, and science-driven

The Power of Nanoliposomes



GF Without Liposome



GF With Nanoliposome

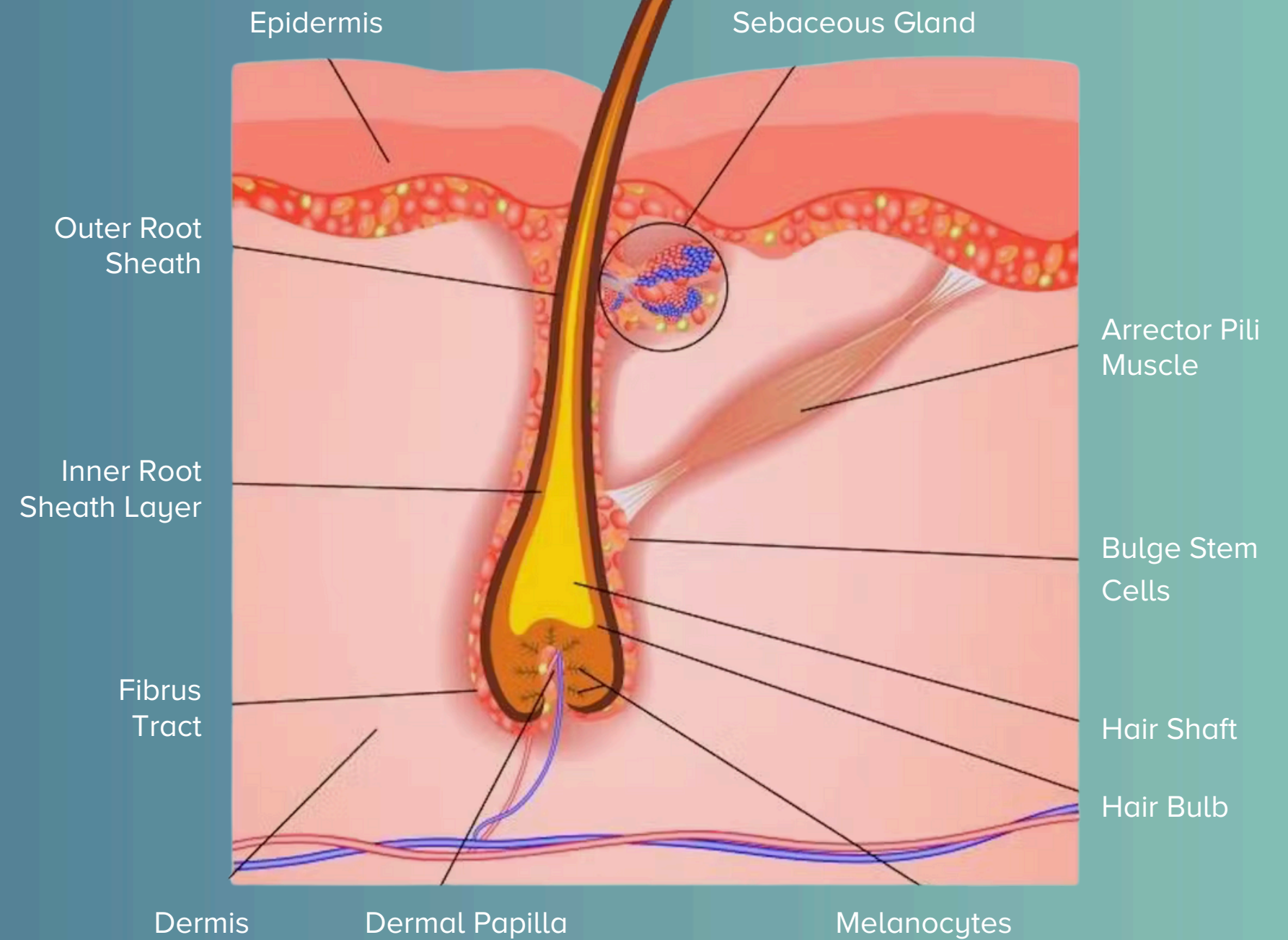
Each growth factor is encapsulated in a nanoliposome carrier, delivering thousands of hyper-concentrated, targeted growth factors essential for scalp health and hair revitalization.

Inside the Nanoliposome Delivery System

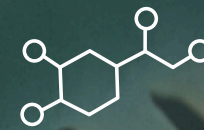
A Closer Look

The nanoliposome carrier that is a particle size of <200nm to ensure absorption via the hair duct into the epidermis (bulge area and down to root of hair).

Hair Structure



SCIENCE-BACKED FORMULA



KeraFactorMD In-Office Serum combines the highest concentration of the proprietary KeraFactor® Peptide Complex* (KFP™) with a novel breakthrough Nanofluorosome™ activation technology to help promote hair that looks smoother, thicker, and fuller.

* US Patent 10,894,074

KeraFactorMD Serum

6 Growth Factors, 2 Skin Proteins, 2 Compounds

Follistatin, FST

is a binding and signaling protein imperative to the hair life cycle, producing the anagen phase of the hair. Patients will see results faster and experience an elongated growth cycle. KeraFactor is the only company to have FST in a topical formulation

PolyDeoxyRiboNucleotide, PDRN

stabilizes the hair follicle on a cellular level and strengthens the scalp by enhancing cell regeneration and promoting healing

NanoFluorosome™

a natural anti-inflammatory and anti-androgenic compound that can be additionally activated with the correct laser or light source

Light-Enhanced Activation

Nanofluorosome™



Reduces
Inflammation



Reverses Follicle
Maturization



Increases
Circulation



Anti-androgenic,
Combating DHT

Laser caps and red light devices in the 630–690nm wavelength activate Nanofluorosome™, which are designed to penetrate the scalp, improve circulation, and reduce inflammation.

Many patients already use laser caps at home to support scalp health. When activated by red light, Nanofluorosome™ are also formulated to help combat DHT on the scalp — one of the leading causes of hair loss.

Cycle Support – KeraFactor®



KeraFactor® products support all stages of the hair life cycle, bringing the hair from the telogen phase to the anagen phase and holding it there, extending the active growth cycle.

Scalp Stimulating Shampoo & Conditioner



Invigorating

- Gently exfoliates and cleanses buildup
- Supports circulation with biomimetic peptides
- Conditions scalp for improved hair appearance
- Each bottle yields, 40 washes
- Ideal for daily use with KeraFactor® stim brush

Scalp Stimulating Wet & Dry Brush



Increases Blood Flow

- Boosts circulation for a healthy scalp
- Soft bristles lift buildup and exfoliate
- Works wet or dry to enhance product absorption
- Use in circular/back-and-forth motions to stimulate

Scalp Stimulating Solution



Renew & Revitalize

- Potent blend of 5 growth factors + 2 skin proteins
- Nanofluorosome™ + Copper Tripeptides
- Dropper allows for precise, mess-free application
- Allows targeted application to areas of concern
- 50ml bottle (each dropper is 1ml) = 50 applications

KeraFlex Laser Cap



Medical Grade Laser Diodes

- FDA-cleared low-level laser therapy (LLLT) device
- 302 individual laser diodes in the 650nm wavelength
- Enhances circulation and targets hair follicle
- Pair Scalp Stimulating Solution for added benefits
- Ideal for patients with androgenetic alopecia
- 6-minute treatment every other day from home

Brows by KeraFactor®



Fuller Brows

- 9 biomimetic growth factors + skin proteins
- Designed to support the brow hair cycle
- Promotes activation of dormant follicles
- Enhances density and visual thickness
- Once-daily application, lasts 2 months

Lashes by KeraFactor®



Healthier Lashes

- 9 biomimetic growth factors + skin proteins
- Designed to support healthier-looking, fuller lashes
- Drug Free formula: no prostaglandin analogs (PGAs)
- Safe for eyes: no discoloration, swelling, or fat loss
- Once-daily application; each tube lasts 2 months

KeraSmooth Hair Brush + KF Silks



Support Your Hair

- Less Breakage
- 3 levels of bristles for less pulling
- 100% Silk Hair Ties

Consultation

Contraindications for KeraFactor®

Not recommended for individuals who are pregnant, nursing, trying to conceive, under 18, or with active scalp infections, psoriasis, eczema, sunburn, or a history of scalp skin cancer.

Potential Adverse Reactions

Scalp irritation, rash, or temporary redness may occur. Discontinue use if a reaction develops. Avoid eye contact, rinse thoroughly with water if contact occurs. For patients allergic to Curcumin (Turmeric) or salmon, perform a patch test as a precaution.

Setting Expectations

Fully bald areas may not respond to treatment, as the follicles are often inactive due to fibrosis. Providers should help patients understand realistic outcomes based on their scalp condition.

Ideal Patient Profile

Stabilized Shedding

Hair loss has stopped

No Major Shedding

No episodes in the past 3 months

Healthy Scalp

Condition is stable and ready for treatment

Androgenetic Alopecia

Gradual thinning over the crown

Telogen Effluvium

Diffuse shedding typically 3–6 months post-stressor (triggers include childbirth, illness, COVID-19, thyroid issues, low iron, and/ or medications)

Dermatologic Hair Loss Conditions

Note: These patients should be under dermatologic care. Once stable KeraFactor® may be considered, though autoimmune cases often require additional anti-inflammatory treatment beyond stimulation.



ALOPECIA AREATA

Autoimmune Disease



FRONTAL FIBROSING ALOPECIA

Postmenopausal – Women



TRICHOTILLOMANIA

Hair Pulling



SCARRING ALOPECIA

Inflammatory – Irreversible

Blood Work

Suggested Blood Panel

- **Ferritin:** Should be >70 ; low levels may indicate iron deficiency
- **TSH:** Elevated levels may suggest hypothyroidism
- **Testosterone:** Check both free (active) and bound (inactive)
- **DHT:** Assess for androgen-related hair loss
- **Prolactin:** Elevated levels may impact hair health
- **SHBG:** Helps interpret hormone balance
- **DHEA-S:** Screen for PCOS-related androgen excess

When to Order Labs

If the patient is experiencing hair loss and has not yet consulted a physician, or if there is no visible improvement after the fourth treatment – consider recommending a medical evaluation and blood work.

Treatment Modalities

Microneedling

Microneedling is used to create micro channels in the scalp, then massage KeraFactorMD Serum on the scalp.

- Microneedling Roller <0.3mm
- Microneedling Stamp <0.3mm
- Microneedling Pen <0.3mm

Best paired with red light therapy for
Nanofluorosome™ activation



Laser

Laser helps create dry microchannels in the scalp to increase absorption on the KeraFactorMD Serum.

1927nm

1440nm

2910nm

1540nm

1550nm

1565nm

Studies using LaseMD 1927nm show 5.5–7.5x
improved absorption



Pre & Post Care

Before Treatment

- ✓ Arrive with freshly washed, dry hair – no products
- ✓ Avoid coloring hair within 48 hours of appointment
- ✓ Keep KeraFactorMD Serum refrigerated until use
- ✓ Prepare treatment area with combs, clips, and tools

After Treatment

- ✓ Leave Serum in overnight / wash hair next day
- ✓ Avoid scalp moisture or sweat for 24 hours
- ✓ Delay hair coloring or treatments for 48 hours
- ✓ Minimize scalp sun exposure for 1 week post TX

In-Office Protocol

1. Prep Scalp

Scalp Preparation In-Office Treatment

- Lightly treat the scalp using microneedling or a non-ablative laser to prepare for serum application

2. Serum Application

Apply & Massage KeraFactorMD Serum

- Twist to unlock the applicator. Place the silicone tip directly on the scalp and press the bottom to dispense

3. Light Activation

Light Activate NanoFluorosome™

- Immediately after treatment, use Red Light Low-Level Laser Therapy to enhance absorption

Recommended Maintenance

FREQUENCY



6 in-office treatments,
spaced 4–6 weeks apart.

MAINTENANCE



1 treatment every 6 months to
maintain optimal results.

TAKE-HOME



Recommend daily use of take-
home products between visits.

Practice Earnings

Patient Profit Projection					
Product	Price	Unit Cost	Retail Price	Units / Patient (6 Months)	Rev / Patient (6 Months)
KeraFactorMD In-Office Serum (Box of 5)	\$500	\$100	\$750	6	\$3,900
KeraFactor® Scalp Stimulating Solution (Box of 6)	\$465	\$77.50	\$169	4	\$366
KeraFactor® Scalp Stimulating Shampoo & Conditioner (Box of 6)	\$150	\$25	\$49	5	\$120
KeraFlex Laser Cap	\$720	\$720	\$1,399	1	\$679
Brows by KeraFactor® (Box of 6)	\$297	\$49.50	\$99	3	\$148.50
Lashes By KeraFactor® (Box of 6)	\$297	\$49.50	\$99	2	\$99
KeraFactor® Scalp Stimulating Wet & Dry Brush (6 pk)	\$80	\$99	\$29	1	\$15.67
KeraSmooth Hair Brush (6 pk)	\$48	\$99	\$16	1	\$8
Total					\$5,336.17

Before & After

Scarring Alopecia

Treatment Plan:

→ 6 KeraLase™ treatments

→ 1 month apart

*Courtesy of: Jeanine Downie
MD – USA*



Before Treatment



After Treatment

Before & After

Telogen Effluvium

Treatment Plan:

- 4 KeraLase™ treatments
- 1 month apart
- Red light therapy

*Courtesy of: Dr. Craig Ziering
CA – USA*



Before Treatment



After Treatment



Before & After

Androgenetic Alopecia

Treatment Plan:

→ 6 KeraLase™ treatments

→ 1 month apart

Final Result:

6 months following a
series of 6 sessions

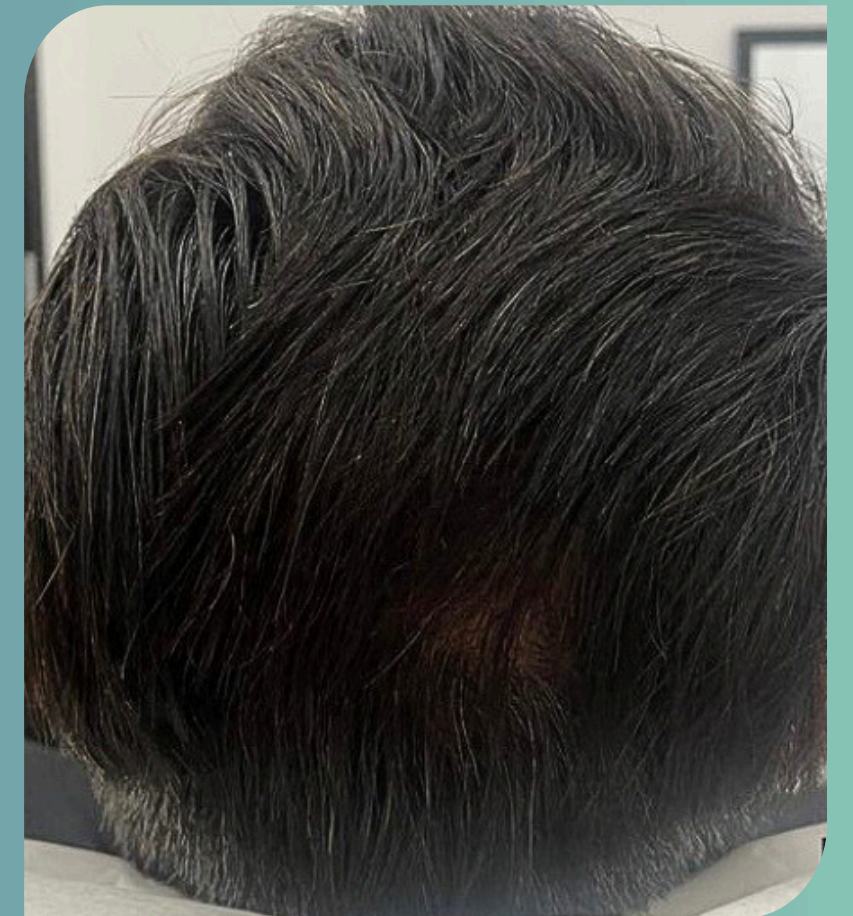
*Courtesy of: Rumur
AZ – USA*



Before Treatment



During Treatment



6 Months After Series

Before & After

Androgenetic Alopecia

Treatment Plan:

→ 6 KeraLase™ treatments

→ 1 month apart

*Courtesy of: Aesthetic Assets
AZ – USA*



Before Treatment



After Treatment

Before & After

Androgenetic Alopecia

Treatment Plan:

- 2 KeraLase™ treatments
- 1 month apart
- Red light therapy

*Courtesy of: Ice Cave Body & Aesthetics
CO – USA*



Before Treatment



After Treatment

Before & After

Possible Telogen Effluvium

Treatment Plan:

→ 6 KeraLase™ treatments

→ 1 month apart

Suggestion:

Bloodwork if no underlying
conditions are reported

*Courtesy of: Skin Pure Medical Aesthetics
MA – USA*

Before Treatment



During Treatment



After Treatment



Provider Materials

KeraFactor® Materials

- Brochure
- KeraFactorMD FAQ
- Presentation
- Before & After's
- Treatment Consent Form
- Consent Form & Photo Guide
- Pricing Guide for KeraFactor® Retail
- KeraFactor® Quick Start Guide
- Sales Sheet "Slims" – Solution
- Sales Sheet "Slims" – Shampoo & Conditioner
- KeraFlex Brochure
- Appropriate Patient Selection Guide

Social Media Assets

- Social Media Posts
- Photos
- Content Brief
- KeraFactor® Video
- KeraFlex Video

Contact Us

East

Jenny Szakal
(734) 968-8184
Jenny@skinqri.com

Central

Ysabella Fernandez
(941) 281-5030
Ysabella@skinqri.com

West

Ida Covello
(424) 283-2457
Ida@skinqri.com

International

Lauren Bartholomeusz
(310) 810-9246
Laurenb@skinqri.com

Inside Sales

Grace Sewell
(508) 641-0523
Grace@skinqri.com

Marketing

Alex Coe
(310) 291-2042
Alex@skinqri.com

Questions



We're here to help — ask us anything about KeraFactor® protocols, products, or patient care.