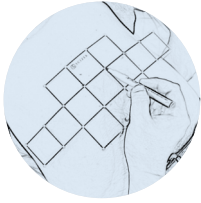


## 1 Turn the System ON

Press the 'I' symbol on the AC Power Switch at the rear of the Main Body and proceed to turn the key clockwise to turn the System ON.



## 2 Outline the Target Region

Mark the area to be treated on the patient using the grid template while the patient is in a lying down position.



## 3 Set the Parameters

Adjust the treatment preference via the Graphical User Interface (GUI).

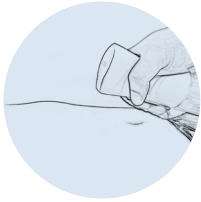


## 4 Conduct a Test Shot

Conduct a test shot at 0 J/cm<sup>2</sup> to ensure that the transducer is moving according to the set pattern.

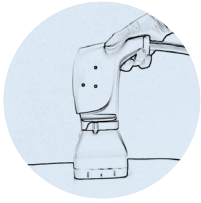


\*Ensure that the symbol is green before proceeding.



## 5 Apply Water

Spray a sufficient amount of water on the treatment area.



## 6 Apply the Cartridge

Place the Cartridge on the treatment area ensuring there is uniform contact with the skin.



## 7 Check for Patient Reactions

Conduct a shot on the patient to check the patient's tolerance level.



## 8 Commence Treatment

Proceed to treat or adjust the parameters on the Graphical User Interface (GUI) based on the patient's tolerance level.



**DO NOT** commence treatment without conducting a test shot at 0 J/cm<sup>2</sup> to ensure the transducer is moving according to the set pattern.

## Contraindications

The SCIZER is contraindicated for use in patients with:

- Pregnancy or when breastfeeding
- Open wounds or lesions
- Severe or cystic acne
- Metal stents/electrical implants
- Bio-absorbable mechanical implants
- Skin infections of any type
- Hemorrhagic disorders or dysfunctions
- Hernias
- Large scars
- Redundant skin folds

## Precautions for Patient

Determine whether treatment is appropriate for patients with the following conditions:

- Anticoagulant therapy
- Skin conditions caused by autoimmune diseases, skin cancer, and Herpes Simplex
- Diabetes or epilepsy
- Severe skin diseases
- Decortication or heart disease
- Hypersensitiveness or hypertrophic scars
- Hemostatic dysfunctions

## Precautions for Procedure

To avoid safety hazards from occurring during treatment with the SCIZER:

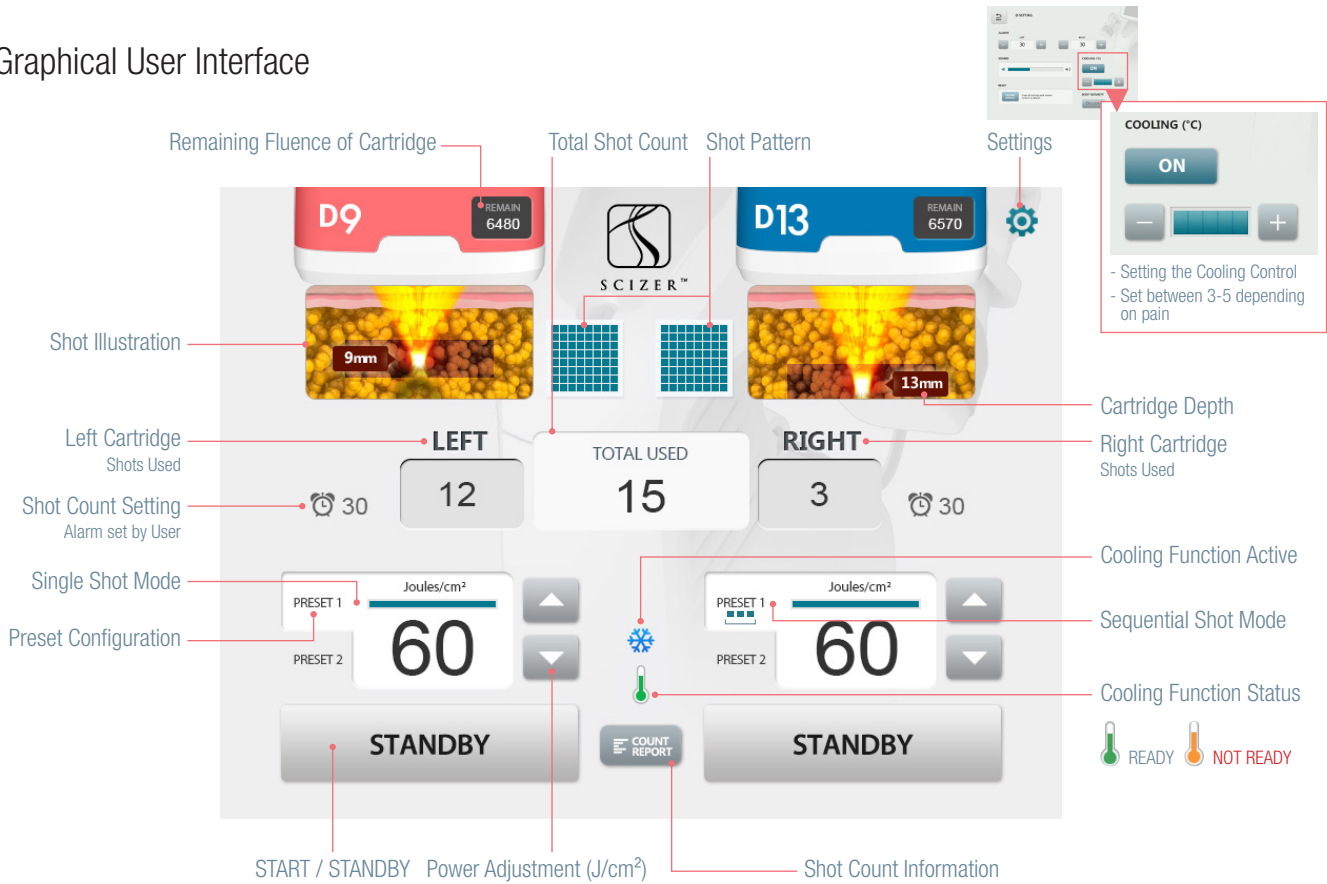
- Do not use the SCIZER without completion of training by an authorized CLASSYS representative.
- To prevent unauthorized use of the device, ensure access is limited strictly to trained and certified personnel only.
- Avoid applying treatment on nerve regions and major vessels.
- If any malfunctions or adverse events occur, immediately stop the treatment procedure.
- Always apply water on target areas before proceeding with the SCIZER treatment.
- Before conducting shots, check that the Cartridge attached on the transducer is applied on the skin properly.

## Precautions for System Safety

To ensure safety of the System and proper maintenance of the SCIZER:

- To avoid risk of electric shock, always inspect the Cartridge, Hand-piece, and Cable before use.
- Do not use a Cable or Cartridge that has been damaged or is leaking fluid.
- Do not remove the covers of the SCIZER Main Body or Hand-pieces as modification of this equipment is not allowed.
- The SCIZER contains no user serviceable components. Contact a local distributor or CLASSYS representative if the System requires service.
- Do not lean over the equipment obliquely and do not give physical external shock to the equipment as it may cause permanent System damage.
- Do not use the equipment with anesthetic gases or flammable materials in the surrounding areas.

## Graphical User Interface



## Preset Guideline

### Preset 1

- Shot energy will remain the same as the original parameter setting for a total of 3 passes.

#### Single Shot Mode

- Shot button must be pressed for every pass to be applied.

Pass 1	Pass 2	Pass 3
Ex: 60 J/cm <sup>2</sup>	60 J/cm <sup>2</sup>	60 J/cm <sup>2</sup>

#### Sequential Shot Mode

- Shot button is pressed once for three consecutive passes.

Pass 1	Pass 2	Pass 3
Ex: 60 J/cm <sup>2</sup>	60 J/cm <sup>2</sup>	60 J/cm <sup>2</sup>

### Preset 2

- Shot energy will decrease by 5 J/cm<sup>2</sup> from the original parameter setting for a total of 3 passes.

#### Single Shot Mode

- Shot button must be pressed for every pass to be applied.

Pass 1	Pass 2	Pass 3
Ex: 60 J/cm <sup>2</sup>	55 J/cm <sup>2</sup>	50 J/cm <sup>2</sup>

#### Sequential Shot Mode

- Shot button is pressed once for three consecutive passes.

Pass 1	Pass 2	Pass 3
Ex: 60 J/cm <sup>2</sup>	55 J/cm <sup>2</sup>	50 J/cm <sup>2</sup>

## Precautions for Body Procedures

- Do not apply treatment on the bony areas and nerve regions.
- Do not apply treatment directly on the navel, posterior superior iliac spine (PSIS), pelvic, or sciatic nerves.
- Based on the patient's tolerance level, physicians may apply passes at different energy levels per site.

- Monitor patient reactions upon delivery of ultrasound energy on the body. Adjust energy levels if the patient experiences discomfort.
- Patients must comply with standards of each Body Cartridge based on the pinch test and treatment area being targeted:
  - 13.0mm – depth of at least 2.5cm
  - 9.0mm – depth of at least 1.8cm

**SCIZER D9**  
 2MHz-9.0mm

**SCIZER D13**  
 2MHz-13.0mm

## Abdomen



Cartridge	Passes per Site	Energy (J/cm <sup>2</sup> )	Total Energy (J/cm <sup>2</sup> ) per Site
● D9-9.0mm	3 Passes	50 / 55 / 60	150-180 J/cm <sup>2</sup>
● D13-13.0mm	3 Passes	50 / 55 / 60	150-180 J/cm <sup>2</sup>

## Love Handles



## Flanks



Sites: Shot application squares Passes: Number of shots per site

Cartridge	Passes per Site	Energy (J/cm <sup>2</sup> )	Total Energy (J/cm <sup>2</sup> ) per Site
● D9-9.0mm	3 Passes	50 / 55 / 60	150-180 J/cm <sup>2</sup>
● D13-13.0mm	3 Passes	50 / 55 / 60	150-180 J/cm <sup>2</sup>

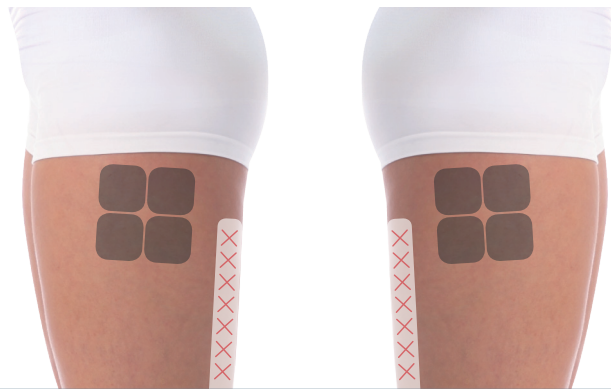
### Precautions for Abdominal Region

- Treating the Abdominal Region with a total energy fluence range between 140 – 180 J/cm<sup>2</sup> per site is applicable. The above are recommendations by practitioners.
- Do not apply treatment directly on the navel, posterior superior iliac spine (PSIS), or pelvis.
- When treating areas of the Abdominal Region, apply treatment on one side at a time before proceeding to the other.

## ○ Inner Thighs



## ○ Outer Thighs



## ○ Below Buttocks



Sites: Shot application squares Passes: Number of shots per site

Cartridge	Passes per Site	Energy (J/cm <sup>2</sup> )	Total Energy (J/cm <sup>2</sup> ) per Site
● D9-9.0mm	3 Passes	45 / 50 / 55	135-165 J/cm <sup>2</sup>
	4 Passes	35 / 40 / 45	140-180 J/cm <sup>2</sup>

### ○ Precautions for Upper Leg Region

- Treating the Upper Leg Region with a total energy fluence range between 90 – 140 J/cm<sup>2</sup> per site is applicable. The above are recommendations by practitioners.
- Do not apply treatment directly on the sciatic nerve.
- When treating areas of the Upper Leg Region, apply treatment on one side at a time before proceeding to the other.