

# SCIZER

## 9mm , 13mm

### TREATMENT RECORD

 SCIZER



Age: 26 Female



Measure	Baseline	Immediately Post Procedure	1 Week Post Procedure	1 Month Post Procedure	2 Months Post Procedure
5cm Above Navel	80cm	78.8cm	78.5cm	76.7cm (-3.3cm)	70cm (-10cm)
Navel	83cm	82cm	80cm	80cm (-3cm)	75cm (-8cm)
5cm Below Navel	92.5cm	91cm	90.2cm	89cm (-3.5cm)	84.5cm (-8cm)

Age: 26 Female



Measure	Baseline	Immediately Post Procedure	1 Week Post Procedure	1 Month Post Procedure	2 Months Post Procedure
5cm Above Navel	80cm	78.8cm	78.5cm	76.7cm (-3.3cm)	70cm (-10cm)
Navel	83cm	82cm	80cm	80cm (-3cm)	75cm (-8cm)
5cm Below Navel	92.5cm	91cm	90.2cm	89cm (-3.5cm)	84.5cm (-8cm)

Age: 26 Female



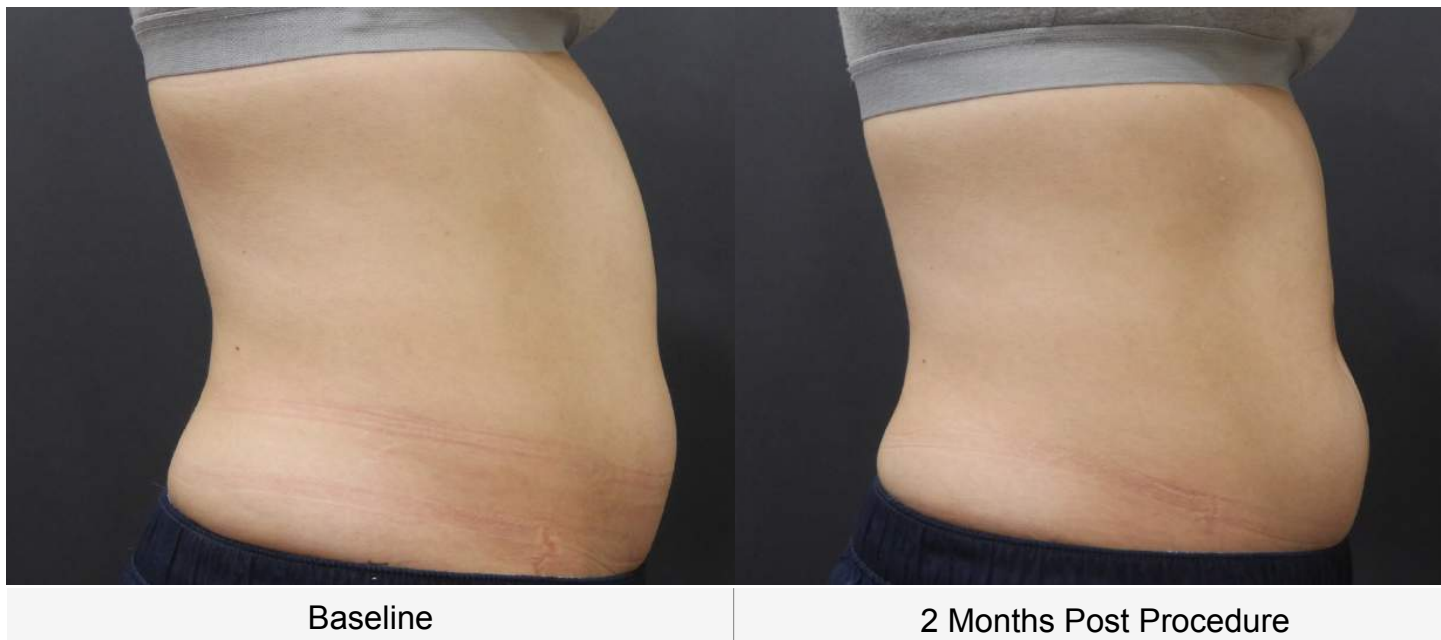
Measure	Baseline	Immediately Post Procedure	1 Week Post Procedure	1 Month Post Procedure	2 Months Post Procedure
5cm Above Navel	80cm	78.8cm	78.5cm	76.7cm (-3.3cm)	70cm (-10cm)
Navel	83cm	82cm	80cm	80cm (-3cm)	75cm (-8cm)
5cm Below Navel	92.5cm	91cm	90.2cm	89cm (-3.5cm)	84.5cm (-8cm)

Age: 31 Female



Measure	Baseline	Immediately Post Procedure	1 Month Post Procedure
5cm Above Navel	80.5cm	81cm	79cm ( - 1.5cm)
Navel	83cm	83cm	82.5cm ( - 0.5cm)
5cm Below Navel	91cm	90cm	88cm ( - 3cm)

Age: 31 Female



Measure	Baseline	Immediately Post Procedure	1 Month Post Procedure
5cm Above Navel	80.5cm	81cm	79cm ( - 1.5cm)
Navel	83cm	83cm	82.5cm ( - 0.5cm)
5cm Below Navel	91cm	90cm	88cm ( - 3cm)

Age: 35 Female



Baseline | 1 Months Post Procedure | 2 Months Post Procedure

Measure	Baseline	Immediately Post Procedure	1 Month Post Procedure	2 Months Post Procedure
5cm Above Navel	73.5cm	72cm	71cm (- 2.5cm)	72cm (-1.5 cm)
Navel	80cm	79cm	76cm (- 4cm)	76cm (- 4cm)
5cm Below Navel	88cm	86cm	87cm (- 1cm)	84.5cm (-3.5cm)

Age: 35 Female



Measure	Baseline	Immediately Post Procedure	1 Month Post Procedure	2 Months Post Procedure
5cm Above Navel	73.5cm	72cm	71cm (- 2.5cm)	72cm (-1.5 cm)
Navel	80cm	79cm	76cm (- 4cm)	76cm (- 4cm)
5cm Below Navel	88cm	86cm	87cm (- 1cm)	84.5cm (-3.5cm)



Age: 35 Female



Measure	Baseline	Immediately Post Procedure	1 Month Post Procedure	2 Months Post Procedure
5cm Above Navel	73.5cm	72cm	71cm ( - 2.5cm)	72cm ( -1.5 cm)
Navel	80cm	79cm	76cm ( - 4cm)	76cm ( - 4cm)
5cm Below Navel	88cm	86cm	87cm ( - 1cm)	84.5cm ( -3.5cm)

Age: 27 Female



Measure	Baseline	Immediately Post Procedure	1 Week Post Procedure	1 Month Post Procedure	2 Months Post Procedure
5cm Above Navel	95cm	94cm	92.5cm	90cm (-5cm)	89.5cm (-5.5cm)
Navel	96cm	96cm	95.5cm	93cm (-3cm)	90cm (-6cm)
5cm Below Navel	103.3cm	100cm	97.5cm	101cm (-2.3cm)	94cm (-9.3cm)

Age: 27 Female



Measure	Baseline	Immediately Post Procedure	1 Week Post Procedure	1 Month Post Procedure	2 Months Post Procedure
5cm Above Navel	95cm	94cm	92.5cm	90cm (-5cm)	89.5cm (-5.5cm)
Navel	96cm	96cm	95.5cm	93cm (-3cm)	90cm (-6cm)
5cm Below Navel	103.3cm	100cm	97.5cm	101cm (-2.3cm)	94cm (-9.3cm)

Age: 27 Female



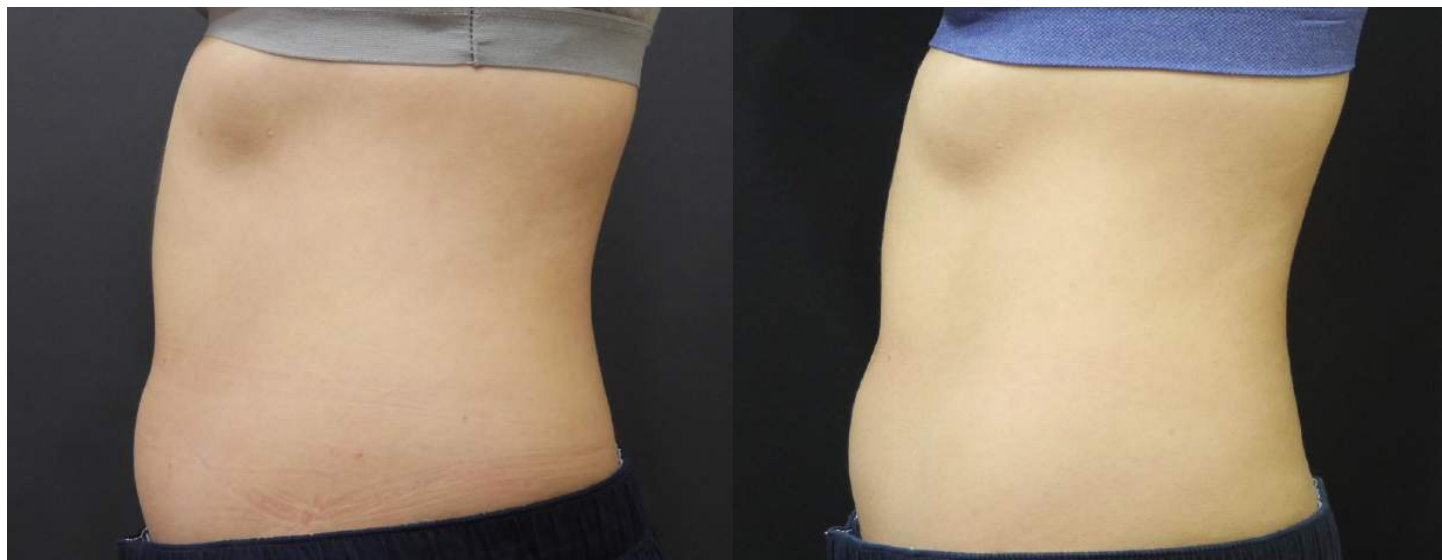
Measure	Baseline	Immediately Post Procedure	1 Week Post Procedure	1 Month Post Procedure	2 Months Post Procedure
5cm Above Navel	95cm	94cm	92.5cm	90cm (-5cm)	89.5cm (-5.5cm)
Navel	96cm	96cm	95.5cm	93cm (-3cm)	90cm (-6cm)
5cm Below Navel	103.3cm	100cm	97.5cm	101cm (-2.3cm)	94cm (-9.3cm)

Age: 31 Female



Measure	Baseline	Immediately Post Procedure	1 Week Post Procedure	1 Month Post Procedure	2 Months Post Procedure	3 Months Post Procedure
5cm Above Navel	76cm	74.2cm	73.3cm	72cm (-4cm)	70.5cm (-5.5cm)	70cm (-6cm)
Navel	81.5cm	79.5cm	79.5cm	78cm (-3.5cm)	76cm (-5.5cm)	74cm (-7.5cm)
5cm Below Navel	87cm	87cm	85.7cm	85cm (-2cm)	82cm (-5cm)	81.5cm (-5.5cm)

Age: 31 Female



Baseline

3 Months Post Procedure

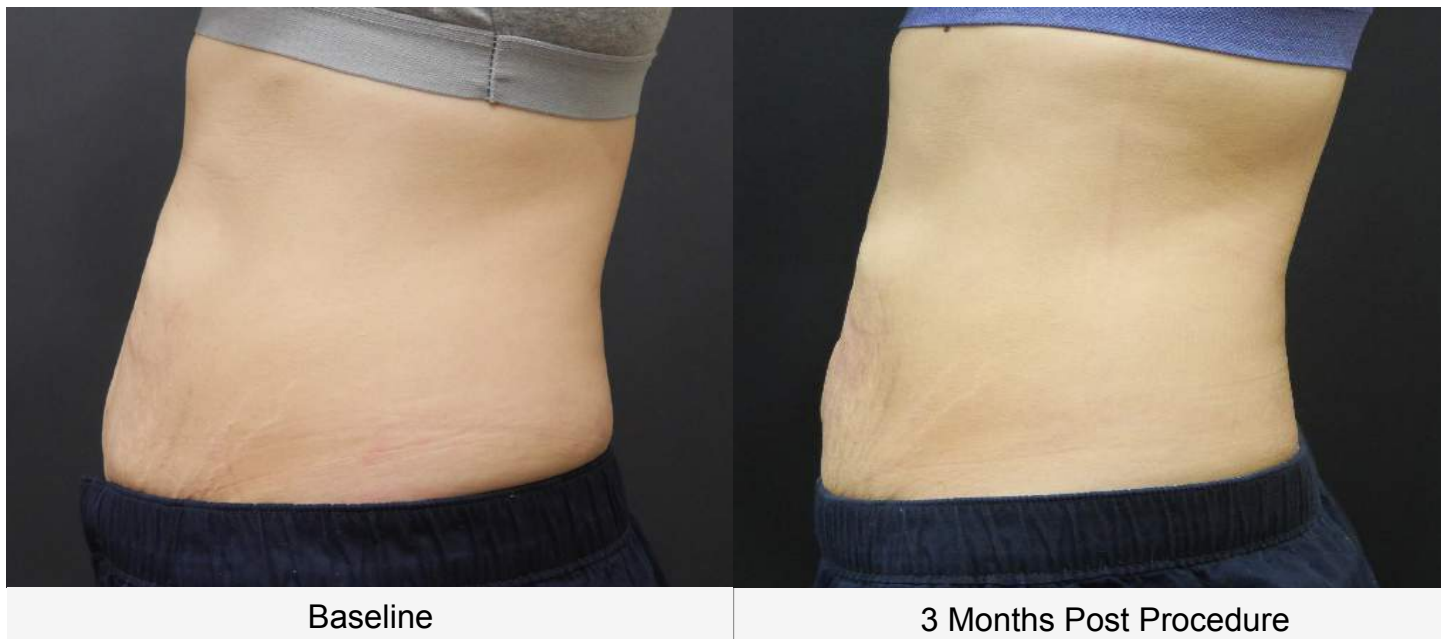
Measure	Baseline	Immediately Post Procedure	1 Week Post Procedure	1 Month Post Procedure	2 Months Post Procedure	3 Months Post Procedure
5cm Above Navel	76cm	74.2cm	73.3cm	72cm (-4cm)	70.5cm (-5.5cm)	70cm (-6cm)
Navel	81.5cm	79.5cm	79.5cm	78cm (-3.5cm)	76cm (-5.5cm)	74cm (-7.5cm)
5cm Below Navel	87cm	87cm	85.7cm	85cm (-2cm)	82cm (-5cm)	81.5cm (-5.5cm)

## Age: 31 Female



Measure	Baseline	Immediately Post Procedure	1 Week Post Procedure	1 Month Post Procedure	2 Months Post Procedure	3 Months Post Procedure
5cm Above Navel	76cm	74.2cm	73.3cm	72cm (-4cm)	70.5cm (-5.5cm)	70cm (-6cm)
Navel	81.5cm	79.5cm	79.5cm	78cm (-3.5cm)	76cm (-5.5cm)	74cm (-7.5cm)
5cm Below Navel	87cm	87cm	85.7cm	85cm (-2cm)	82cm (-5cm)	81.5cm (-5.5cm)

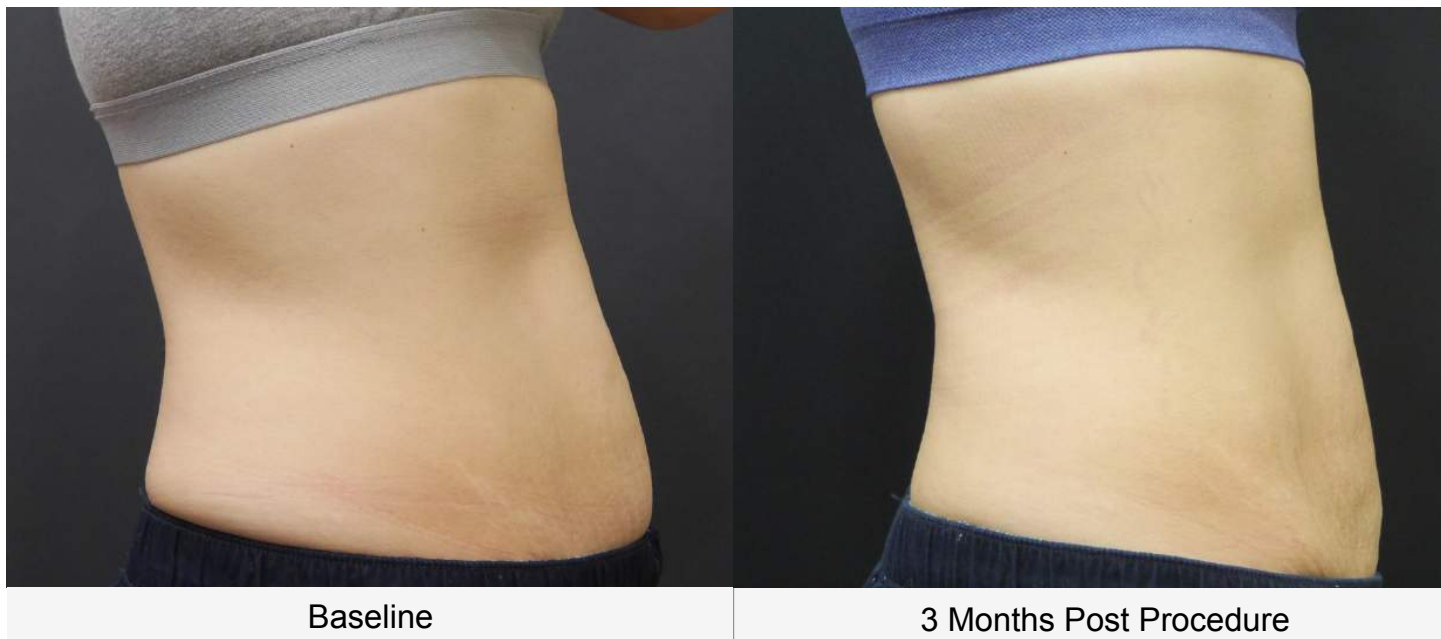
Age: 46 Female



Measure	Baseline	Immediately Post Procedure	1 Month Post Procedure	2 Months Post Procedure	3 Months Post Procedure
5cm Above Navel	74cm	73cm	73cm ( -1cm)	72cm ( - 2cm)	71.5cm ( -2.5cm)
Navel	79.7cm	80cm	76.8cm ( -2.9cm)	79cm ( -0.7cm)	75cm ( -4.7cm)
5cm Below Navel	87cm	86.3cm	85cm ( - 2cm)	83cm ( - 4cm)	82cm ( -5cm)



Age: 46 Female



Measure	Baseline	Immediately Post Procedure	1 Month Post Procedure	2 Months Post Procedure	3 Months Post Procedure
5cm Above Navel	74cm	73cm	73cm ( -1cm)	72cm ( - 2cm)	71.5cm ( -2.5cm)
Navel	79.7cm	80cm	76.8cm ( -2.9cm)	79cm ( -0.7cm)	75cm ( -4.7cm)
5cm Below Navel	87cm	86.3cm	85cm ( - 2cm)	83cm ( - 4cm)	82cm ( -5cm)

Age: 27 Female



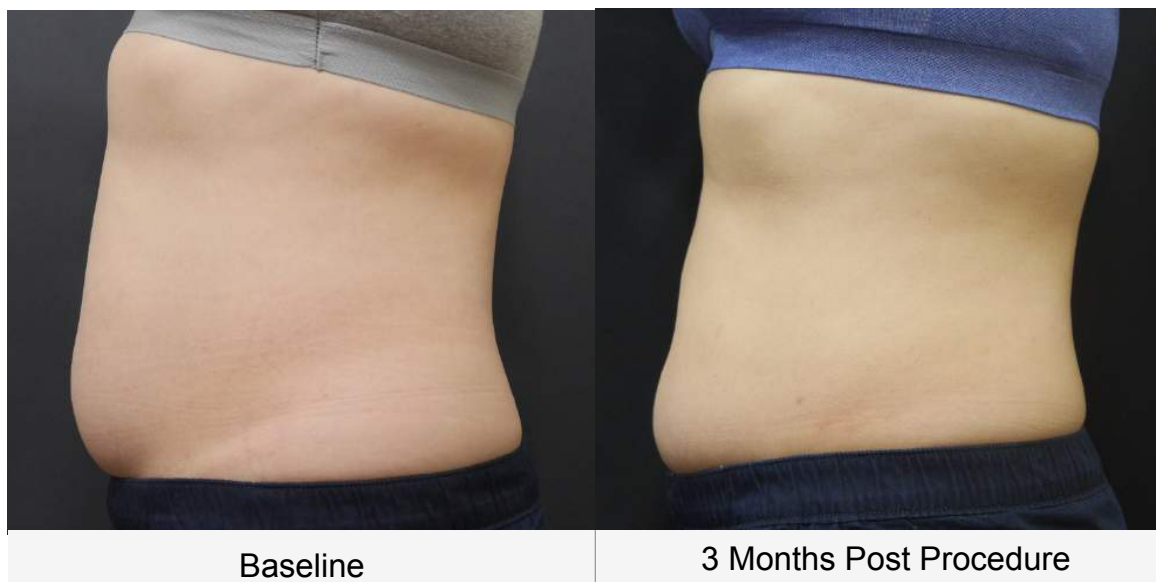
Measure	Baseline	1 Week Post Procedure	1 Month Post Procedure	2 Months Post Procedure	3 Months Post Procedure
5cm Above Navel	87.5cm	84.5cm	86cm (-1.5cm)	84cm (-3.5cm)	84cm (-3.5cm)
Navel	92cm	88cm	89cm (-3cm)	87.5cm (-4.5cm)	86cm (-6cm)
5cm Below Navel	95.3cm	93.3cm	95cm (-0.3cm)	92cm (-3.3cm)	90.5cm (-4.8cm)

Age: 27 Female



Measure	Baseline	1 Week Post Procedure	1 Month Post Procedure	2 Months Post Procedure	3 Months Post Procedure
5cm Above Navel	87.5cm	84.5cm	86cm (-1.5cm)	84cm (-3.5cm)	84cm (-3.5cm)
Navel	92cm	88cm	89cm (-3cm)	87.5cm (-4.5cm)	86cm (-6cm)
5cm Below Navel	95.3cm	93.3cm	95cm (-0.3cm)	92cm (-3.3cm)	90.5cm (-4.8cm)

Age: 27 Female



Measure	Baseline	1 Week Post Procedure	1 Month Post Procedure	2 Months Post Procedure	3 Months Post Procedure
5cm Above Navel	87.5cm	84.5cm	86cm (-1.5cm)	84cm (-3.5cm)	84cm (-3.5cm)
Navel	92cm	88cm	89cm (-3cm)	87.5cm (-4.5cm)	86cm (-6cm)
5cm Below Navel	95.3cm	93.3cm	95cm (-0.3cm)	92cm (-3.3cm)	90.5cm (-4.8cm)

Age: 32 Female



Measure	Baseline	1 Month Post Procedure
5cm Above Navel	67.5cm	64cm ( -3.5cm)
Navel	74cm	66cm ( -8cm)
5cm Below Navel	82cm	78cm ( -4cm)

Age: 38 Female



Baseline | 1 Month Post Procedure | 2 Months Post Procedure

Measure	Baseline	Immediately Post Procedure	1 Week Post Procedure	1 Month Post Procedure	2 Months Post Procedure
5cm Above Navel	70.5cm	69cm	68.5cm	66.5cm (-4cm)	66cm (-4.5cm)
Navel	79cm	77.5cm	79cm	77cm (-2cm)	76cm (-3cm)
5cm Below Navel	85.8cm	84cm	84cm	84cm (-1.8cm)	83cm (-2.8cm)

Age: 35 Female



Baseline

3 Months Post Procedure

Measure	Baseline	Immediately Post Procedure	1 Month Post Procedure	2 Months Post Procedure	3 Months Post Procedure
5cm Above Navel	73.5cm	72cm	71cm ( - 2.5cm)	72cm ( -1.5 cm)	69cm ( -4.5cm)
Navel	80cm	79cm	76cm ( - 4cm)	76cm ( - 4cm)	75.5cm ( -4.5cm)
5cm Below Navel	88cm	86cm	87cm ( - 1cm)	84.5cm ( -3.5cm)	83cm ( -5cm)

Age: 35 Female



Baseline | 3 Months Post Procedure

Measure	Baseline	Immediately Post Procedure	1 Month Post Procedure	2 Months Post Procedure	3 Months Post Procedure
5cm Above Navel	73.5cm	72cm	71cm (- 2.5cm)	72cm (-1.5 cm)	69cm (-4.5cm)
Navel	80cm	79cm	76cm (- 4cm)	76cm (- 4cm)	75.5cm (-4.5cm)
5cm Below Navel	88cm	86cm	87cm (- 1cm)	84.5cm (-3.5cm)	83cm (-5cm)



Age 33, F/ 9mm Cartridge / 30-35J

Total sites 8(4+4), Total shots 24



Baseline

2 Months Post Procedure

Age 26, F/ 9mm Cartridge / 30-40J

Total sites 12(6+6), Total shots 36



Baseline

1 Months Post Procedure

Age 29, F/ 9mm Cartridge / 30J

Total sites 6(3+3), Total shots 18

