

Body contouring SCIZER 9mm, 13mm

IMCAS Bali 2017
Dr Adrian Lim

 SCIZER



Non-surgical body contouring

- Demand *
- Efficacy and safety

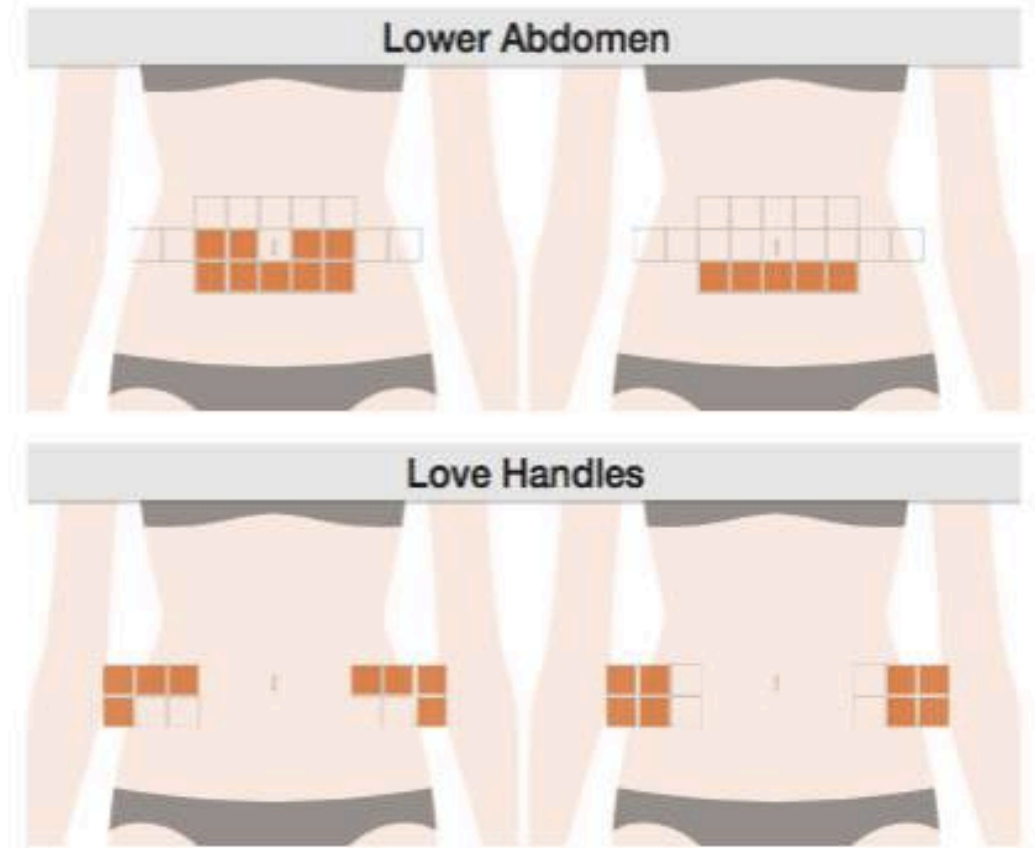
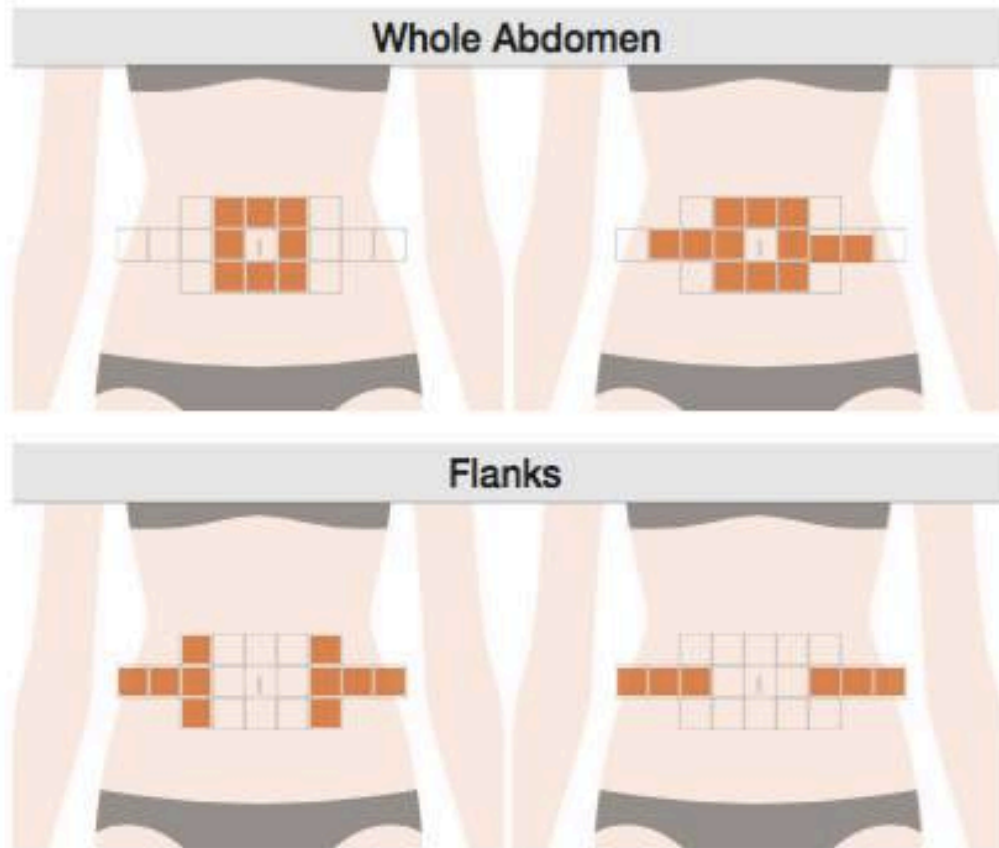
* Procedural growth: 823% increase Jan 2010-2012. n = 201 (2010), 671 (2011), 1857 (2012)
Stevens et al. Broad overview of a clinical and commercial experience with CoolSculpting. Aes surg J. 2013; 33: 835-46

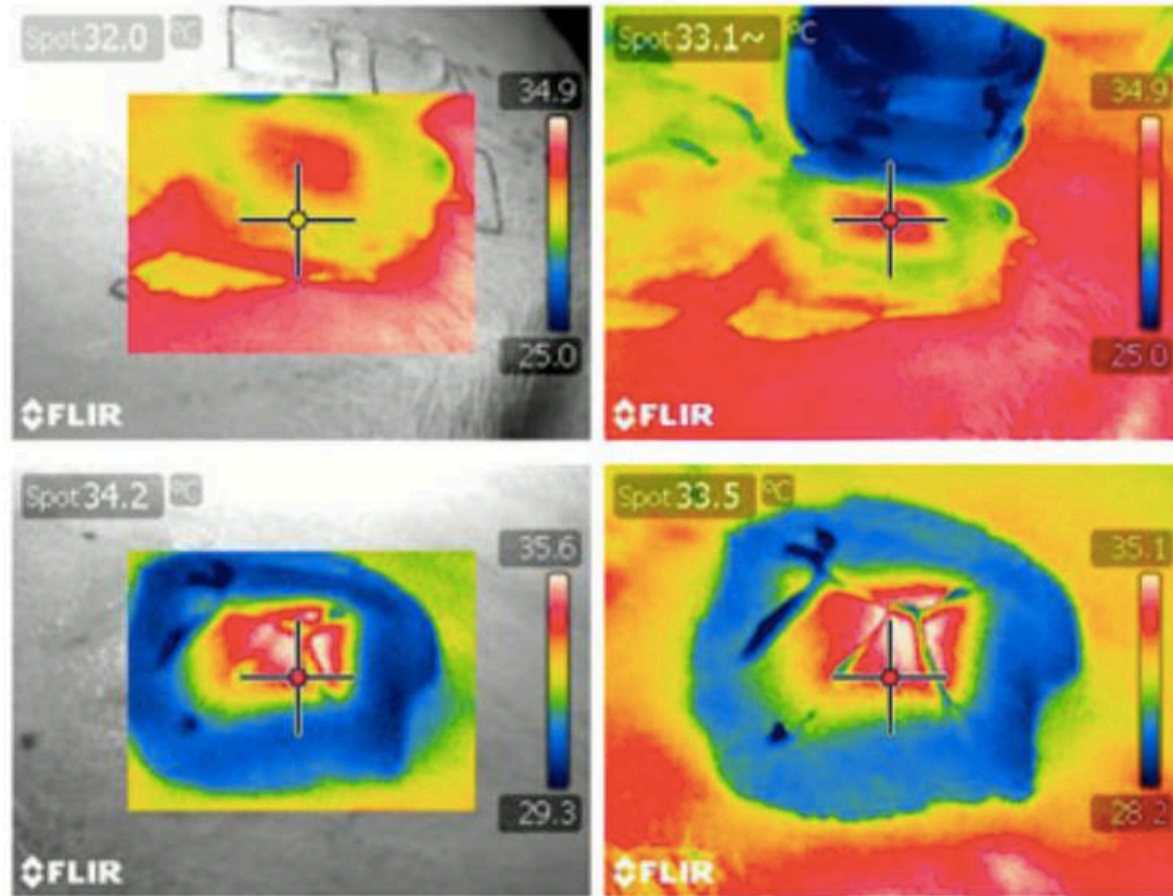
What are the options?

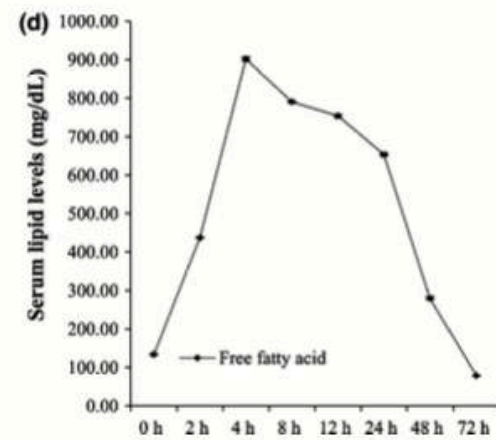
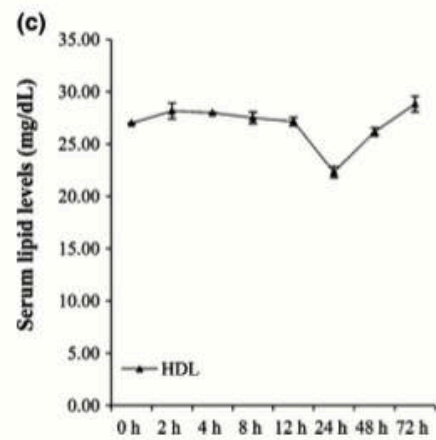
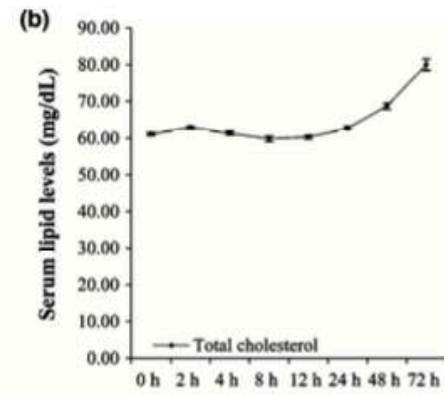
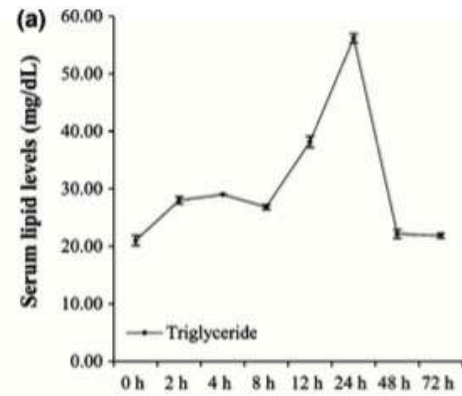
Technology	Mechanism	Pain	After-effects	Sessions (typical)
HIFU (old)	Necrosis	+++	2w Intense bruising, inflammation	2
Unipolar RF	Apoptosis	++	2-3d inflammation	2-3
Acoustic wave	Apoptosis	0	None	8
Laser (NdYAG)	Necrosis	+	Mild	? 3+
Cryolipolysis	Apoptosis	+	1w Bruising, numbness	1-2
SCIZER (new)	Micro-necrosis	+	Minimal, mild bruising (9mm)	2-3

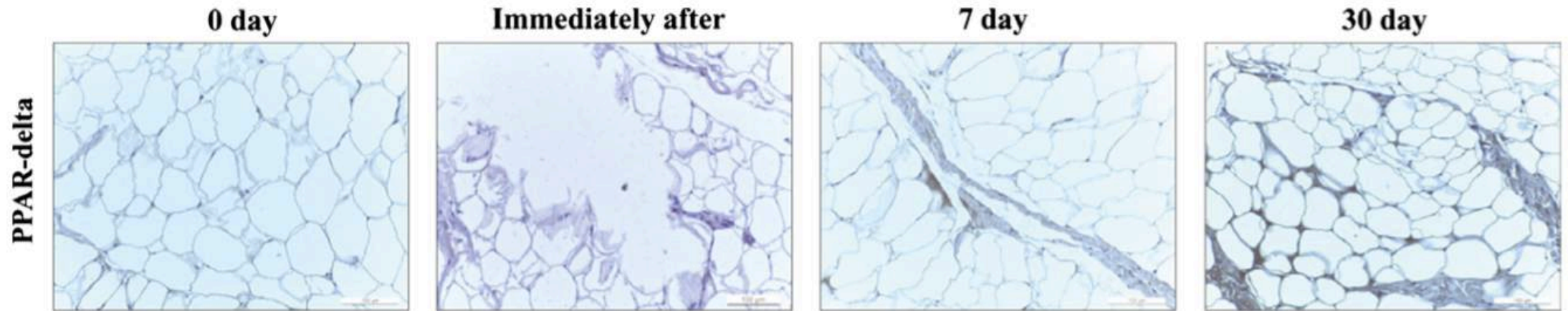
* Procedural growth: 823% increase Jan 2010-2012. n = 201 (2010), 671 (2011), 1857 (2012)
 Stevens et al. Broad overview of a clinical and commercial experience with CoolSculpting. Aes surg J. 2013; 33: 835-46

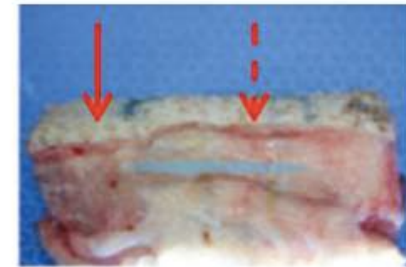
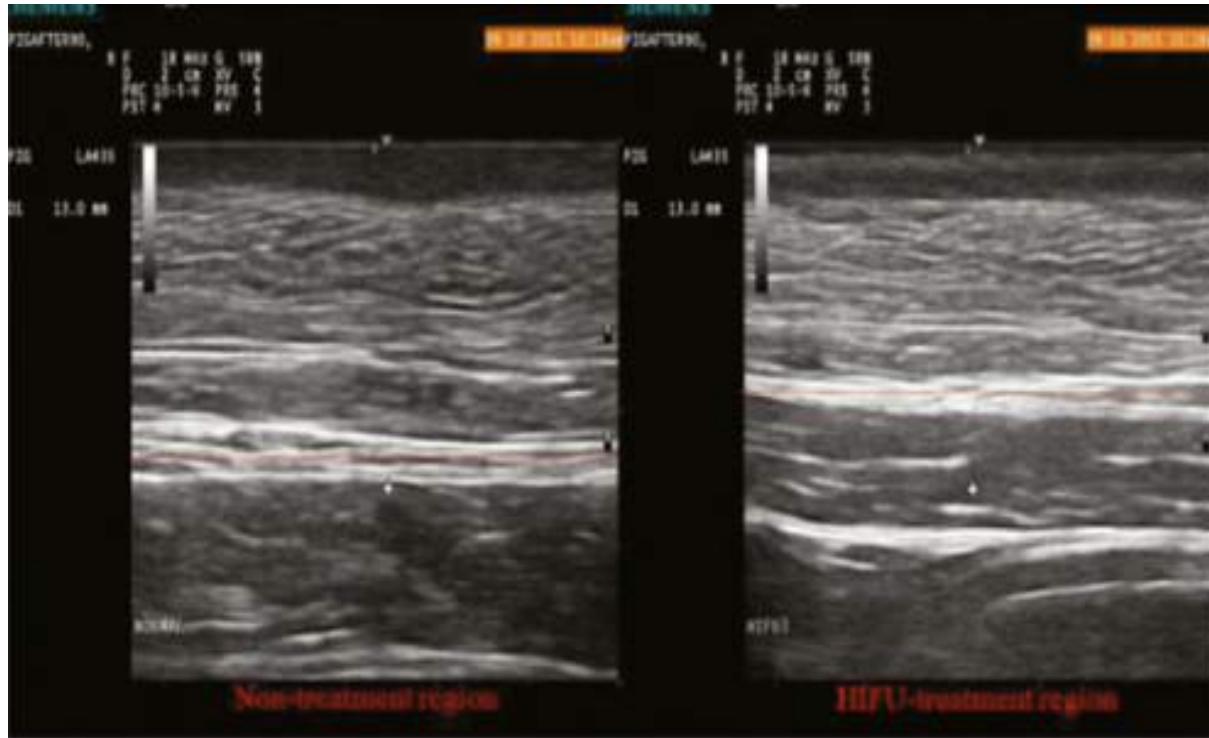
3 passes of 13mm (60mj) *and 1-2 passes of 9mm on full (60j) – may get bruising*







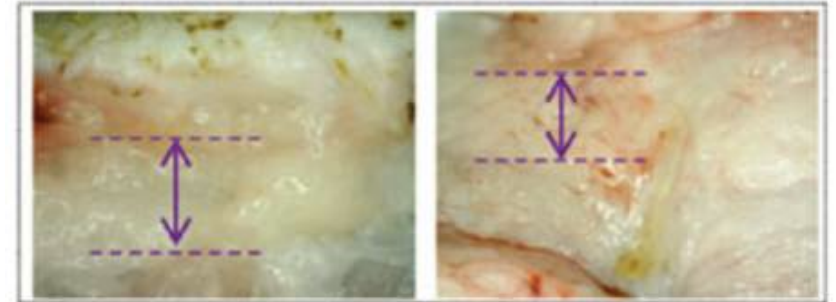


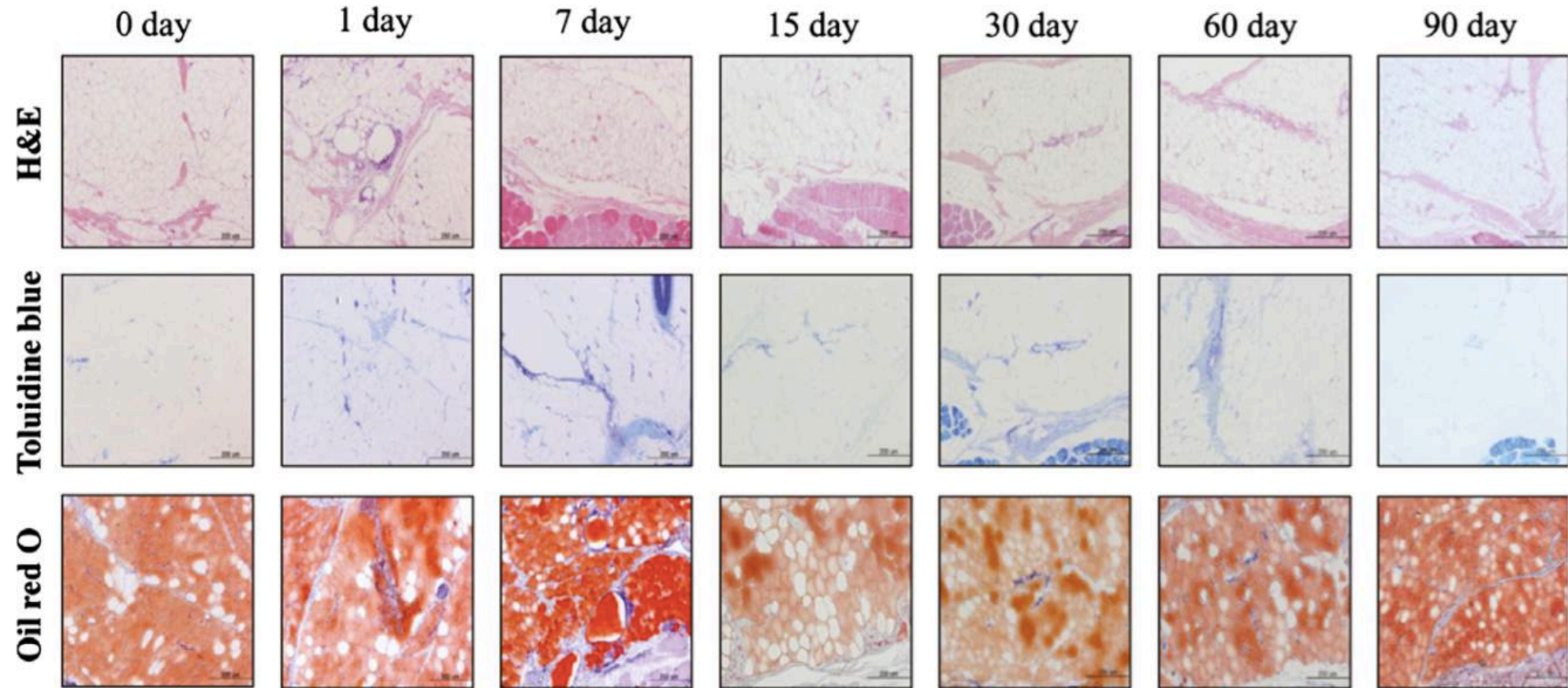


: Target zone

Non-treatment

HIFU treatment





Essential Accessories







4 Mark the treatment area with grid template.



5



Age: 26 Female



Measure	Baseline	Immediately Post Procedure	1 Week Post Procedure	1 Month Post Procedure	2 Months Post Procedure
5cm Above Navel	80cm	78.8cm	78.5cm	76.7cm (-3.3cm)	70cm (-10cm)
Navel	83cm	82cm	80cm	80cm (-3cm)	75cm (-8cm)
5cm Below Navel	92.5cm	91cm	90.2cm	89cm (-3.5cm)	84.5cm (-8cm)

Age: 26 Female



Measure	Baseline	Immediately Post Procedure	1 Week Post Procedure	1 Month Post Procedure	2 Months Post Procedure
5cm Above Navel	80cm	78.8cm	78.5cm	76.7cm (-3.3cm)	70cm (-10cm)
Navel	83cm	82cm	80cm	80cm (-3cm)	75cm (-8cm)
5cm Below Navel	92.5cm	91cm	90.2cm	89cm (-3.5cm)	84.5cm (-8cm)

Age: 26 Female



Measure	Baseline	Immediately Post Procedure	1 Week Post Procedure	1 Month Post Procedure	2 Months Post Procedure
5cm Above Navel	80cm	78.8cm	78.5cm	76.7cm (-3.3cm)	70cm (-10cm)
Navel	83cm	82cm	80cm	80cm (-3cm)	75cm (-8cm)
5cm Below Navel	92.5cm	91cm	90.2cm	89cm (-3.5cm)	84.5cm (-8cm)

Age: 31 Female



Measure	Baseline	Immediately Post Procedure	1 Month Post Procedure
5cm Above Navel	80.5cm	81cm	79cm (- 1.5cm)
Navel	83cm	83cm	82.5cm (- 0.5cm)
5cm Below Navel	91cm	90cm	88cm (- 3cm)

Age: 31 Female



Measure	Baseline	Immediately Post Procedure	1 Month Post Procedure
5cm Above Navel	80.5cm	81cm	79cm (- 1.5cm)
Navel	83cm	83cm	82.5cm (- 0.5cm)
5cm Below Navel	91cm	90cm	88cm (- 3cm)

Age: 35 Female



Baseline

1 Months Post Procedure

2 Months Post Procedure

Measure	Baseline	Immediately Post Procedure	1 Month Post Procedure	2 Months Post Procedure
5cm Above Navel	73.5cm	72cm	71cm (- 2.5cm)	72cm (-1.5 cm)
Navel	80cm	79cm	76cm (- 4cm)	76cm (- 4cm)
5cm Below Navel	88cm	86cm	87cm (- 1cm)	84.5cm (-3.5cm)

Age: 35 Female



Measure	Baseline	Immediately Post Procedure	1 Month Post Procedure	2 Months Post Procedure
5cm Above Navel	73.5cm	72cm	71cm (- 2.5cm)	72cm (-1.5 cm)
Navel	80cm	79cm	76cm (- 4cm)	76cm (- 4cm)
5cm Below Navel	88cm	86cm	87cm (- 1cm)	84.5cm (-3.5cm)

Age: 27 Female



Measure	Baseline	Immediately Post Procedure	1 Week Post Procedure	1 Month Post Procedure	2 Months Post Procedure
5cm Above Navel	95cm	94cm	92.5cm	90cm (-5cm)	89.5cm (-5.5cm)
Navel	96cm	96cm	95.5cm	93cm (-3cm)	90cm (-6cm)
5cm Below Navel	103.3cm	100cm	97.5cm	101cm (-2.3cm)	94cm (-9.3cm)

Age: 27 Female



Measure	Baseline	Immediately Post Procedure	1 Week Post Procedure	1 Month Post Procedure	2 Months Post Procedure
5cm Above Navel	95cm	94cm	92.5cm	90cm (-5cm)	89.5cm (-5.5cm)
Navel	96cm	96cm	95.5cm	93cm (-3cm)	90cm (-6cm)
5cm Below Navel	103.3cm	100cm	97.5cm	101cm (-2.3cm)	94cm (-9.3cm)

Age: 27 Female

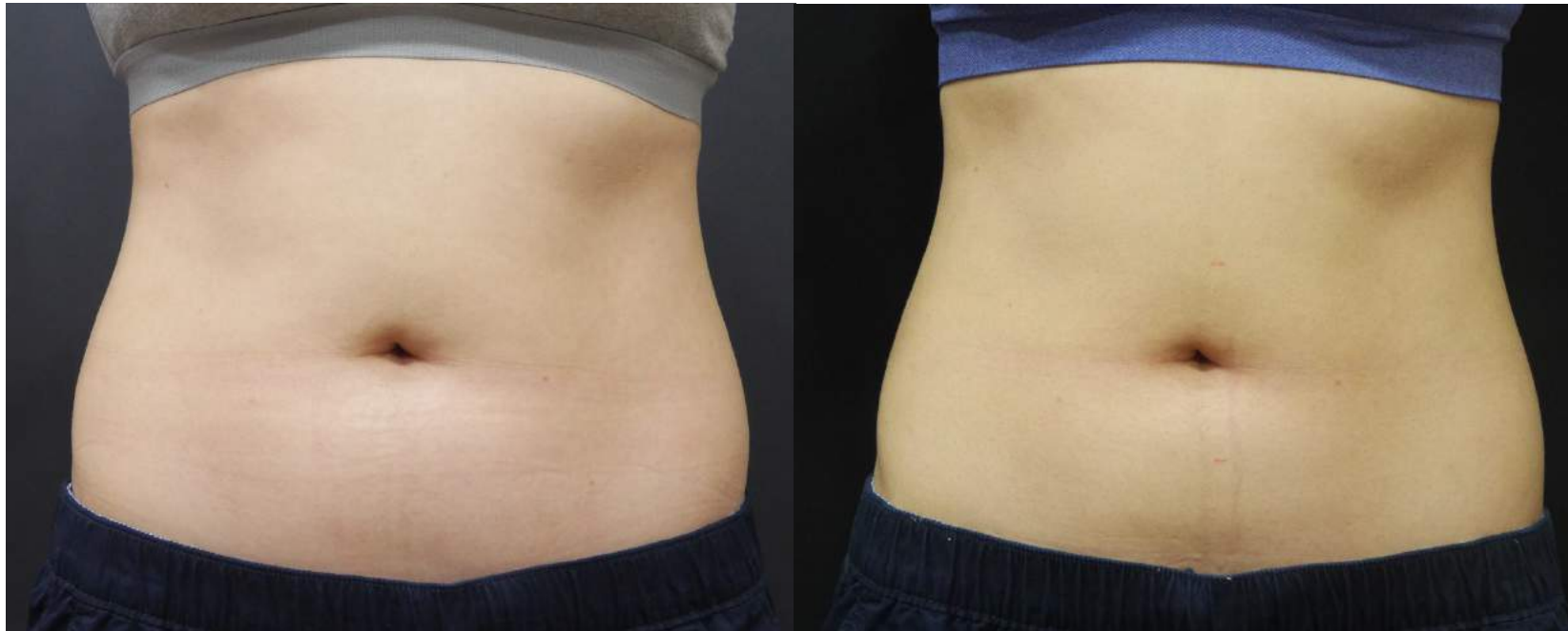


Baseline

2 Months Post Procedure

Measure	Baseline	Immediately Post Procedure	1 Week Post Procedure	1 Month Post Procedure	2 Months Post Procedure
5cm Above Navel	95cm	94cm	92.5cm	90cm (-5cm)	89.5cm (-5.5cm)
Navel	96cm	96cm	95.5cm	93cm (-3cm)	90cm (-6cm)
5cm Below Navel	103.3cm	100cm	97.5cm	101cm (-2.3cm)	94cm (-9.3cm)

Age: 31 Female

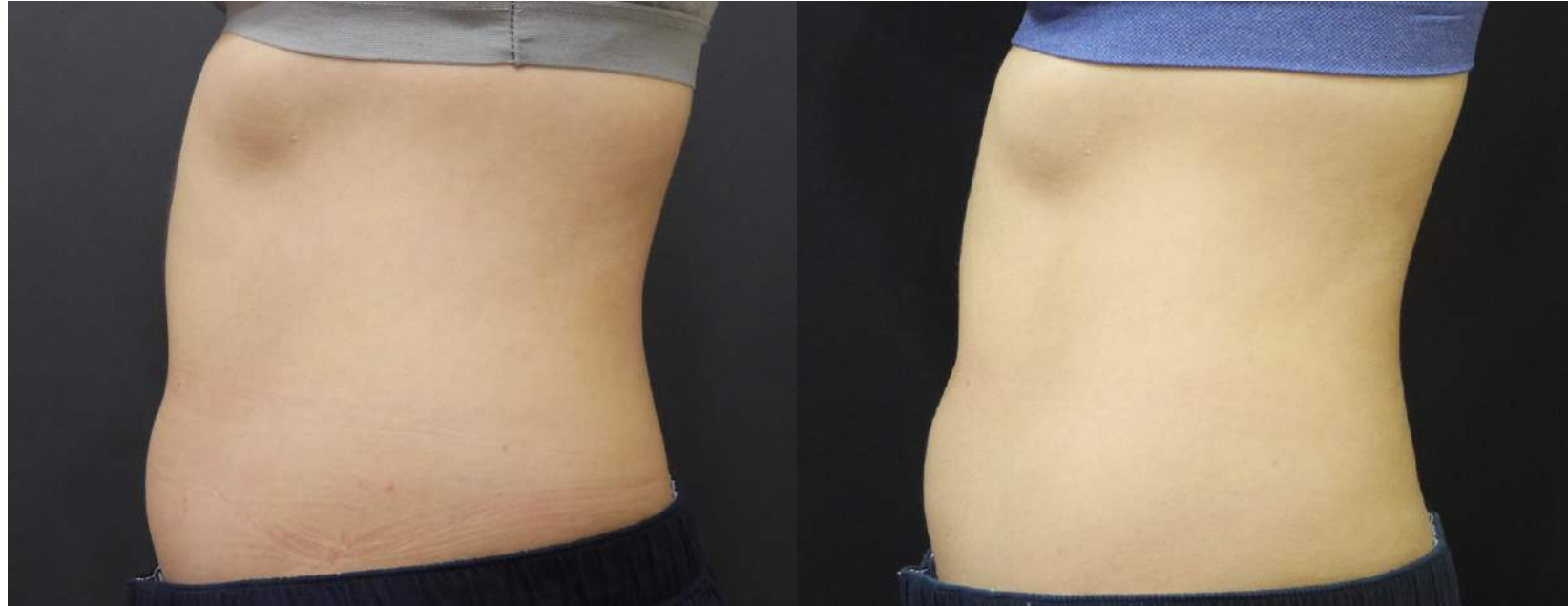


Baseline

3 Months Post Procedure

Measure	Baseline	Immediately Post Procedure	1 Week Post Procedure	1 Month Post Procedure	2 Months Post Procedure	3 Months Post Procedure
5cm Above Navel	76cm	74.2cm	73.3cm	72cm (-4cm)	70.5cm (-5.5cm)	70cm (-6cm)
Navel	81.5cm	79.5cm	79.5cm	78cm (-3.5cm)	76cm (-5.5cm)	74cm (-7.5cm)
5cm Below Navel	87cm	87cm	85.7cm	85cm (-2cm)	82cm (-5cm)	81.5cm (-5.5cm)

Age: 31 Female

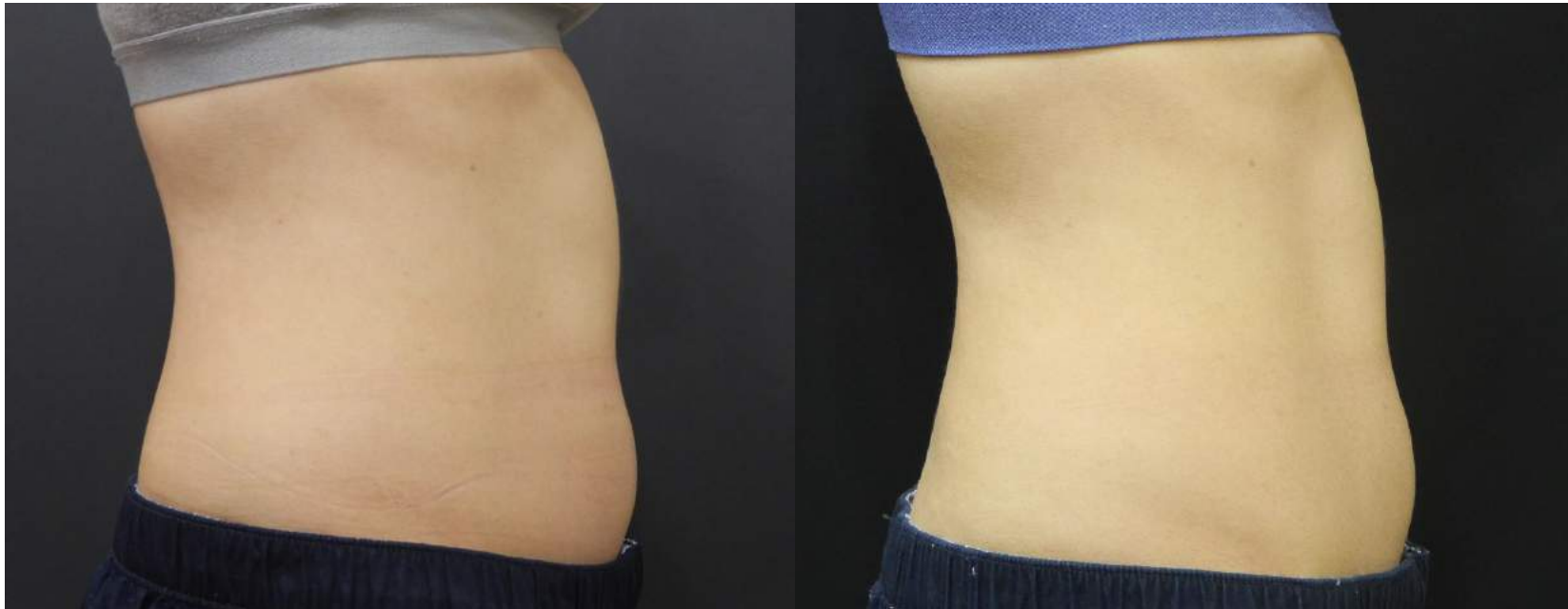


Baseline

3 Months Post Procedure

Measure	Baseline	Immediately Post Procedure	1 Week Post Procedure	1 Month Post Procedure	2 Months Post Procedure	3 Months Post Procedure
5cm Above Navel	76cm	74.2cm	73.3cm	72cm (-4cm)	70.5cm (-5.5cm)	70cm (-6cm)
Navel	81.5cm	79.5cm	79.5cm	78cm (-3.5cm)	76cm (-5.5cm)	74cm (-7.5cm)
5cm Below Navel	87cm	87cm	85.7cm	85cm (-2cm)	82cm (-5cm)	81.5cm (-5.5cm)

Age: 31 Female



Baseline

3 Months Post Procedure

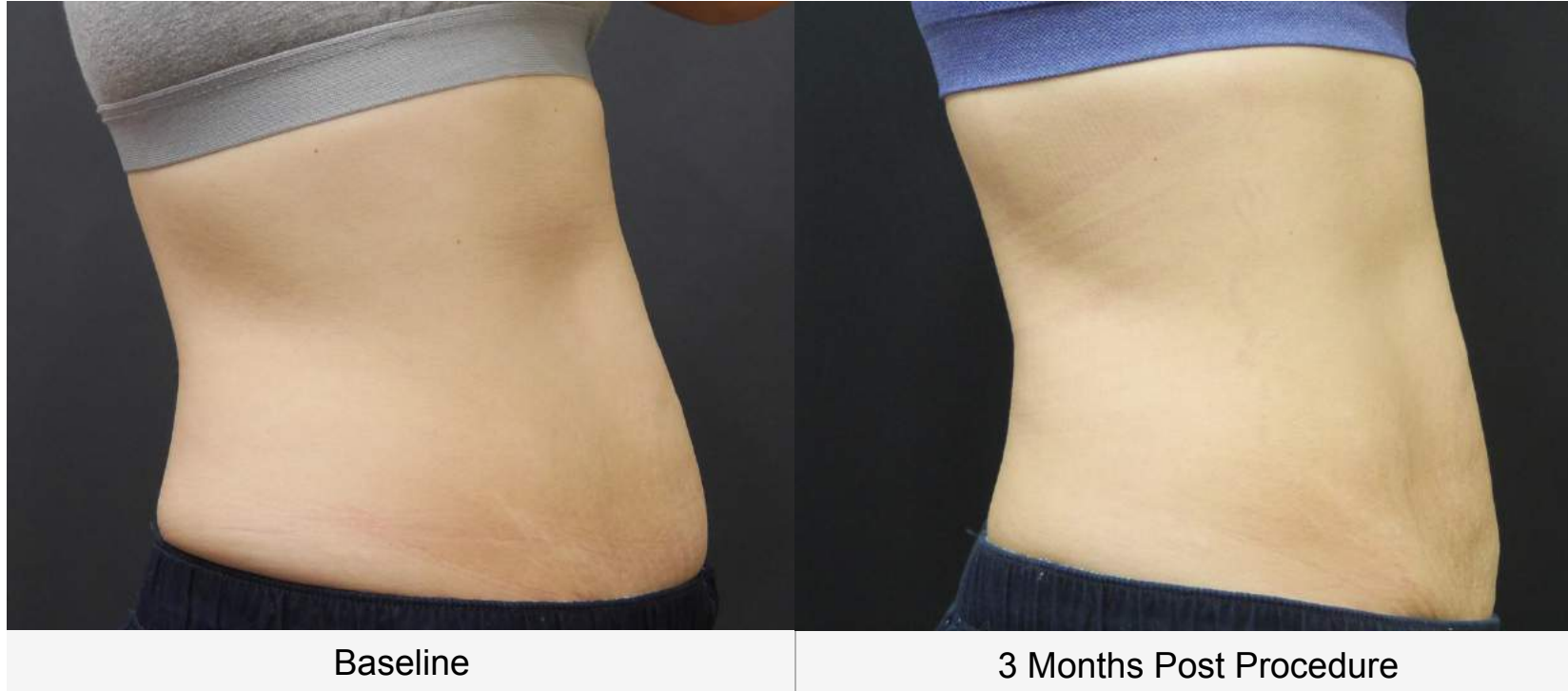
Measure	Baseline	Immediately Post Procedure	1 Week Post Procedure	1 Month Post Procedure	2 Months Post Procedure	3 Months Post Procedure
5cm Above Navel	76cm	74.2cm	73.3cm	72cm (-4cm)	70.5cm (-5.5cm)	70cm (-6cm)
Navel	81.5cm	79.5cm	79.5cm	78cm (-3.5cm)	76cm (-5.5cm)	74cm (-7.5cm)
5cm Below Navel	87cm	87cm	85.7cm	85cm (-2cm)	82cm (-5cm)	81.5cm (-5.5cm)

Age: 46 Female



Measure	Baseline	Immediately Post Procedure	1 Month Post Procedure	2 Months Post Procedure	3 Months Post Procedure
5cm Above Navel	74cm	73cm	73cm (-1cm)	72cm (- 2cm)	71.5cm (-2.5cm)
Navel	79.7cm	80cm	76.8cm (-2.9cm)	79cm (-0.7cm)	75cm (-4.7cm)
5cm Below Navel	87cm	86.3cm	85cm (- 2cm)	83cm (- 4cm)	82cm (-5cm)

Age: 46 Female



Measure	Baseline	Immediately Post Procedure	1 Month Post Procedure	2 Months Post Procedure	3 Months Post Procedure
5cm Above Navel	74cm	73cm	73cm (-1cm)	72cm (- 2cm)	71.5cm (-2.5cm)
Navel	79.7cm	80cm	76.8cm (-2.9cm)	79cm (-0.7cm)	75cm (-4.7cm)
5cm Below Navel	87cm	86.3cm	85cm (- 2cm)	83cm (- 4cm)	82cm (-5cm)

Age: 27 Female



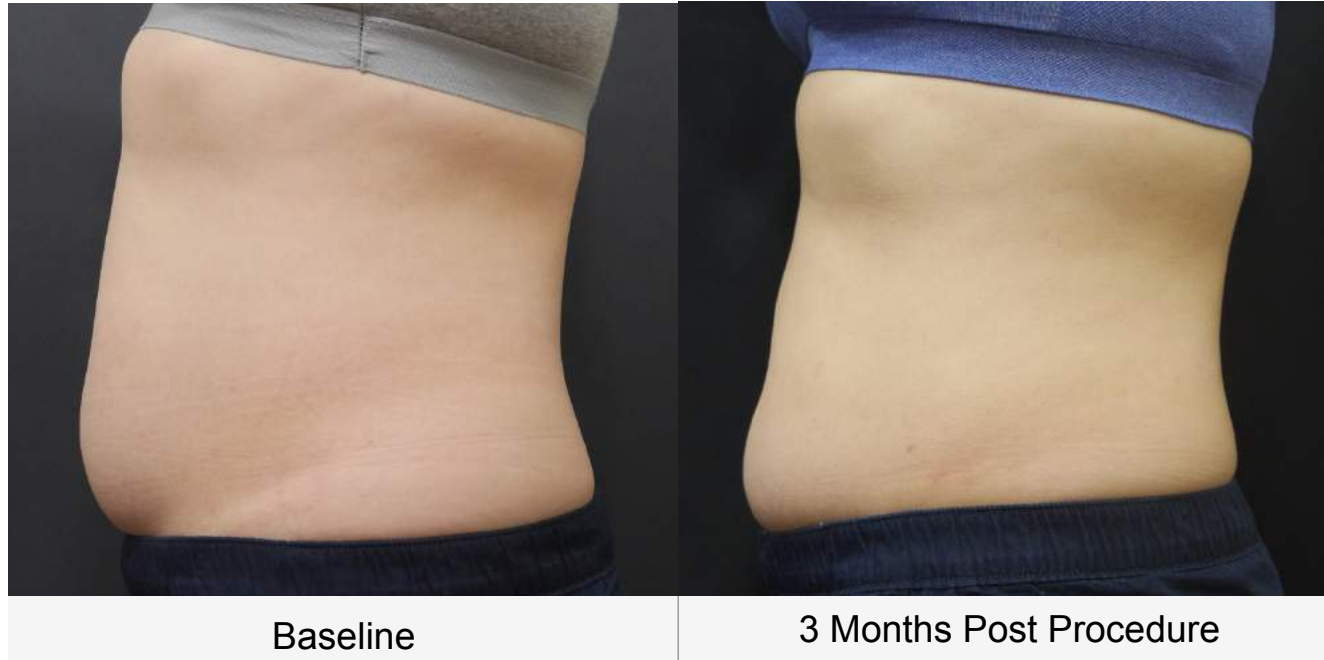
Measure	Baseline	1 Week Post Procedure	1 Month Post Procedure	2 Months Post Procedure	3 Months Post Procedure
5cm Above Navel	87.5cm	84.5cm	86cm (-1.5cm)	84cm (-3.5cm)	84cm (-3.5cm)
Navel	92cm	88cm	89cm (-3cm)	87.5cm (-4.5cm)	86cm (-6cm)
5cm Below Navel	95.3cm	93.3cm	95cm (-0.3cm)	92cm (-3.3cm)	90.5cm (-4.8cm)

Age: 27 Female



Measure	Baseline	1 Week Post Procedure	1 Month Post Procedure	2 Months Post Procedure	3 Months Post Procedure
5cm Above Navel	87.5cm	84.5cm	86cm (-1.5cm)	84cm (-3.5cm)	84cm (-3.5cm)
Navel	92cm	88cm	89cm (-3cm)	87.5cm (-4.5cm)	86cm (-6cm)
5cm Below Navel	95.3cm	93.3cm	95cm (-0.3cm)	92cm (-3.3cm)	90.5cm (-4.8cm)

Age: 27 Female



Measure	Baseline	1 Week Post Procedure	1 Month Post Procedure	2 Months Post Procedure	3 Months Post Procedure
5cm Above Navel	87.5cm	84.5cm	86cm (-1.5cm)	84cm (-3.5cm)	84cm (-3.5cm)
Navel	92cm	88cm	89cm (-3cm)	87.5cm (-4.5cm)	86cm (-6cm)
5cm Below Navel	95.3cm	93.3cm	95cm (-0.3cm)	92cm (-3.3cm)	90.5cm (-4.8cm)

Age: 32 Female



Measure	Baseline	1 Month Post Procedure
5cm Above Navel	67.5cm	64cm (-3.5cm)
Navel	74cm	66cm (-8cm)
5cm Below Navel	82cm	78cm (-4cm)

Age: 38 Female



Baseline

1 Month Post Procedure

2 Months Post Procedure

Measure	Baseline	Immediately Post Procedure	1 Week Post Procedure	1 Month Post Procedure	2 Months Post Procedure
5cm Above Navel	70.5cm	69cm	68.5cm	66.5cm (-4cm)	66cm (-4.5cm)
Navel	79cm	77.5cm	79cm	77cm (-2cm)	76cm (-3cm)
5cm Below Navel	85.8cm	84cm	84cm	84cm (-1.8cm)	83cm (-2.8cm)

Age: 35 Female



Baseline

3 Months Post Procedure

Measure	Baseline	Immediately Post Procedure	1 Month Post Procedure	2 Months Post Procedure	3 Months Post Procedure
5cm Above Navel	73.5cm	72cm	71cm (- 2.5cm)	72cm (-1.5 cm)	69cm (-4.5cm)
Navel	80cm	79cm	76cm (- 4cm)	76cm (- 4cm)	75.5cm (-4.5cm)
5cm Below Navel	88cm	86cm	87cm (- 1cm)	84.5cm (-3.5cm)	83cm (-5cm)

Age: 35 Female



Baseline

3 Months Post Procedure

Measure	Baseline	Immediately Post Procedure	1 Month Post Procedure	2 Months Post Procedure	3 Months Post Procedure
5cm Above Navel	73.5cm	72cm	71cm (- 2.5cm)	72cm (-1.5 cm)	69cm (-4.5cm)
Navel	80cm	79cm	76cm (- 4cm)	76cm (- 4cm)	75.5cm (-4.5cm)
5cm Below Navel	88cm	86cm	87cm (- 1cm)	84.5cm (-3.5cm)	83cm (-5cm)

Age 33, F/ 9mm Cartridge / 30-35J

Total sites 8(4+4), Total shots 24



Baseline

2 Months Post Procedure

Age 26, F/ 9mm Cartridge / 30-40J

Total sites 12(6+6), Total shots 36



Baseline

1 Months Post Procedure

Age 29, F/ 9mm Cartridge / 30J

Total sites 6(3+3), Total shots 18



Baseline

1 Months Post Procedure

Age 50, M/ 13mm Cartridge / 60J

Total sites 6 (abdo), Total shots 18



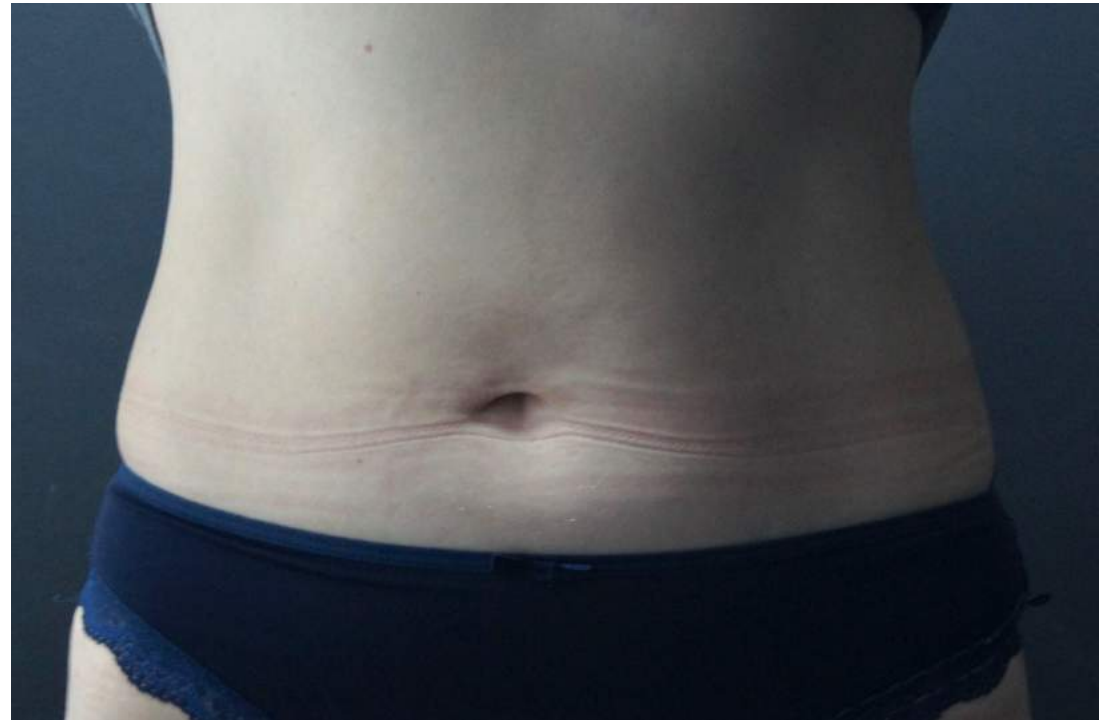
Age 50, M/ 13mm Cartridge / 60J

Total sites 6 (abdo), Total shots 18



Age 36, F/ 13mm Cartridge / 60J

Total sites 10 (abdo), Total shots 30



Age 36, F/ 13mm Cartridge / 60J

Total sites 10 (abdo), Total shots 30



Age 31, F/ 13mm Cartridge / 60J

Total sites 6(3+3), Total shots 18



Age 31, F/ 13mm Cartridge / 60J

Total sites 6(3+3), Total shots 18



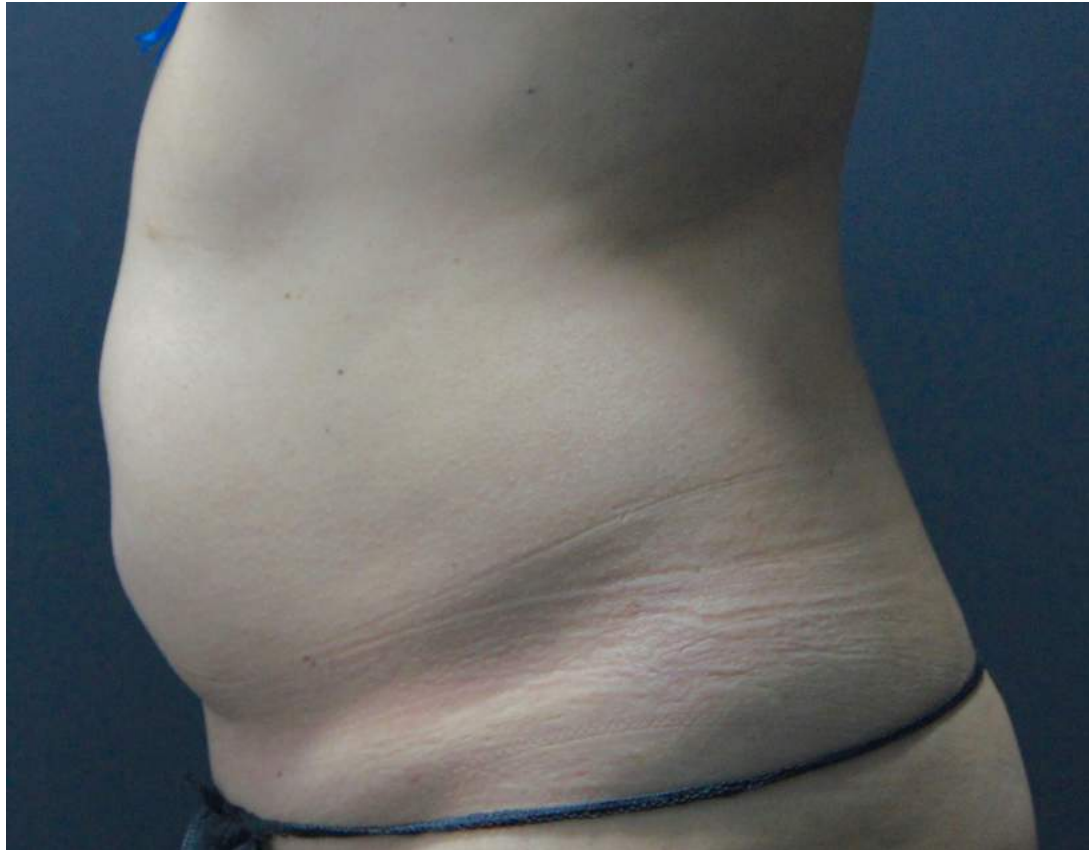
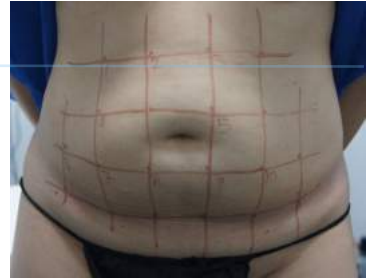
Age 47, F/ 13mm Cartridge / 60J

Total sites 10 (abdo), Total shots 30

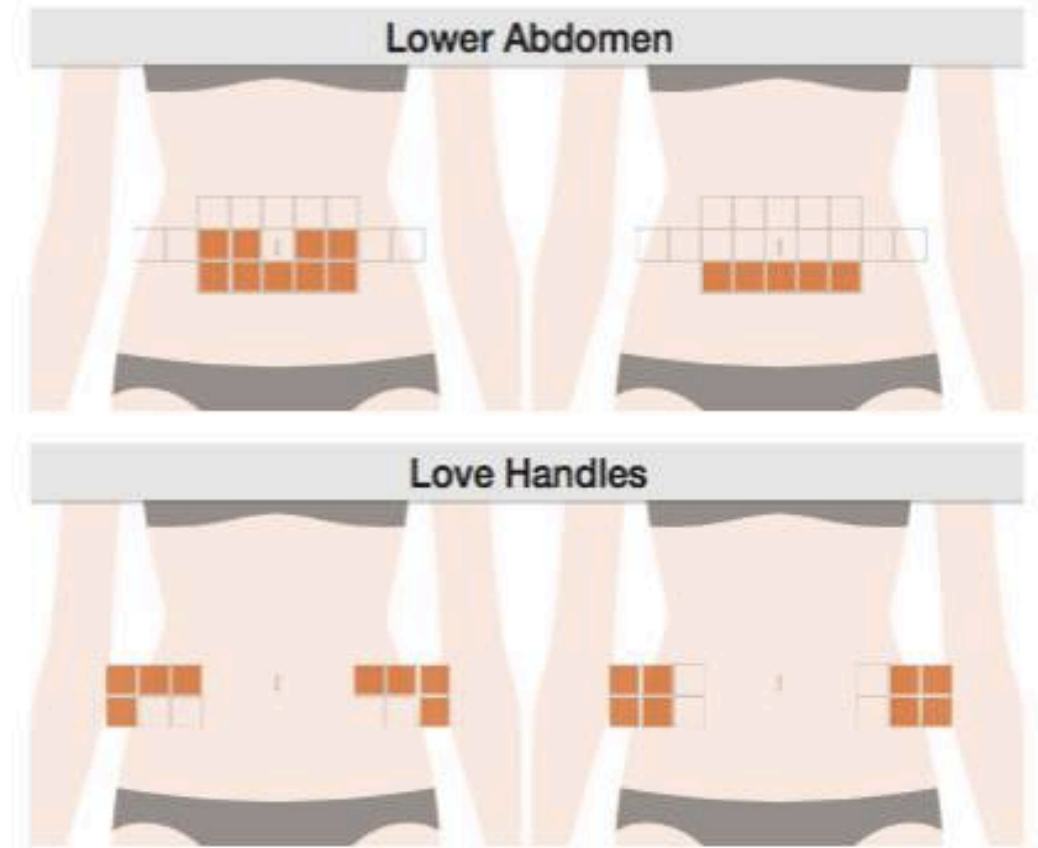
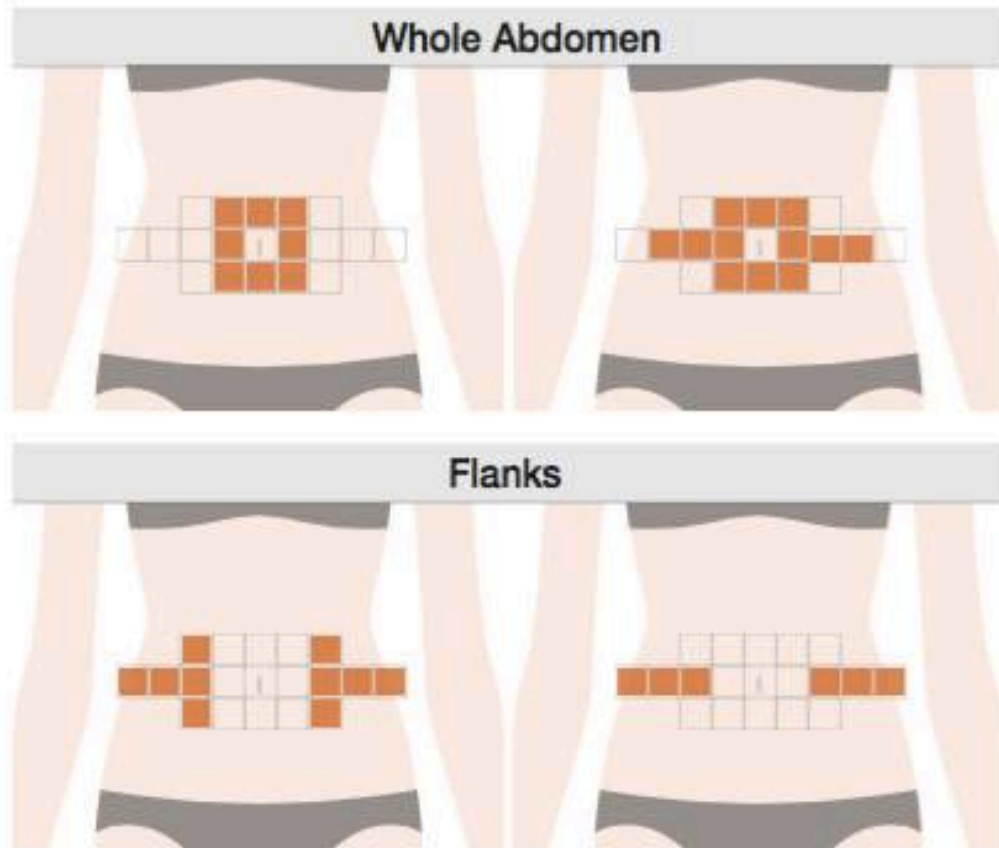


Age 47, F/ 13mm Cartridge / 60J

Total sites 10 (abdo), Total shots 30



3 passes of 13mm (60mj) *and 1-2 passes of 9mm on full (60j) – may get bruising*



Non-responsive to cryolipolysis







summary

- Scizer – exciting new HIFU technology
- Classys – reputable makers of Ultraformer 3
- HIFU lipolysis – comfortable & really works!
- Compliments and adds to cryolipolysis
- Patients are happy and practitioners find it rewarding