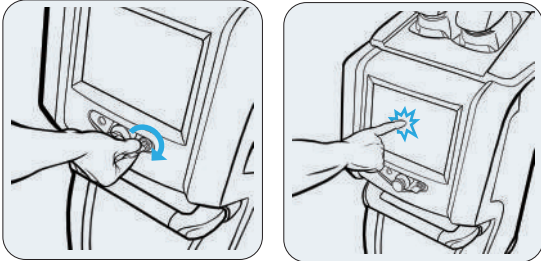


CLATUU™ Quick Manual

1 System Operation & Shield 360 Gel Pad

Please follow these instructions carefully when operating the CLATUU system

1. Starting the system and Setting the parameters



To start the system, turn "On" the key clockwise and set the parameters by pressing the touchscreen LCD.

2. Gel Pad Application



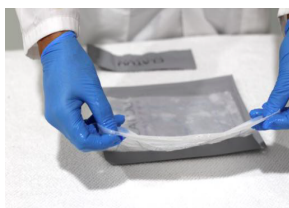
The new Shield 360 gel pad is for use with all Clatuu hand pieces.



Tear open the Shield 360 gel pad along the top from the tab, it is best to open 2 pads if 2 treatment areas are to be done.



Remove the Shield 360 gel pad and place on top of the packaging.



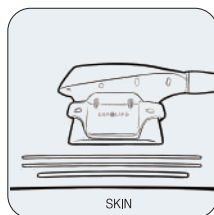
Remove the plastic mesh from between the folded Shield 360 gel pad.



Squeeze out any excess gel from the packaging onto the treatment area and spread evenly. Apply the new Shield 360 gel pad onto the treatment area.



Ensure any air bubbles are carefully smoothed out.



Ensure the Gel Pad has full contact with the skin.



Ensure that the handpiece is on the centre of the Gel Pad before starting treatment.



Hold the 'STANDBY' button on the LCD screen for about 3 seconds. The process has begun when the status moves from 'Standby' to 'Progress'.

CLATUU™ Quick Manual

2 Display Screen & Treatment Parameters

LCD Screen

- Total Shot Time
- Parameters Setting
 - Massage
 - Cooling
 - Suction
- ON / OFF
 - Massage
 - Cooling
 - Suction
- Operation Time
- Sound Volume Button
- Memory Function

• Default
 • Massage off
 • Cooling Level 3
 • Suction Level 4

⚠ Left side is for "Hand-piece A" and right side is for "Hand-piece B" except for "Sound Volume Button"

Hand-piece

• "STANDBY" button
 (Press for more than 3 seconds to operate)

• Display screens that are set on the Main screen
 (Only display on the Hand-piece screen)

⚠ DO NOT touch the main screen while the treatment is in progress.

⚠ The 'Ready' button (the button used to start the treatment process) is only on the HP. When the emergency switch is pressed, the system will be shut down.

1. Upper Abdomen / Lower Abdomen

Suction: [Slider]

Cooling: [Slider]

TIME: 40 - 60 min

TYPE: Flat Type & Wing Type

2. Front Love Handles

Suction: [Slider]

Cooling: [Slider]

TIME: 40 - 60 min

TYPE: Flat Type & Wing Type

3. Bra Line

Suction: [Slider]

Cooling: [Slider]

TIME: 40 - 60 min

TYPE: Flat Type & Wing Type

4. Back Love Handles

Suction: [Slider]

Cooling: [Slider]

TIME: 40 - 60 min

TYPE: Flat Type & Wing Type

5. Hip Line

Suction: [Slider]

Cooling: [Slider]

TIME: 40 - 60 min

TYPE: Flat Type & Wing Type

6. Inner Thigh / Lower Hip

Suction: [Slider]

Cooling: [Slider]

TIME: 40 - 60 min

TYPE: Flat Type & Wing Type

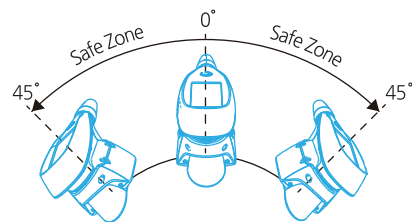
7. Back of Arms

Suction: [Slider]

Cooling: [Slider]

TIME: 20 - 40 min

TYPE: Flat Type & Wing Type



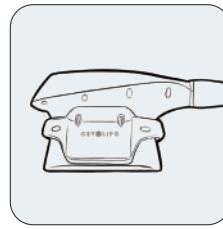
⚠ Do not tilt handpiece more than 45 degrees during procedure.

⚠ When performing treatment on the arm, the handpiece should be placed as far away from the elbow as possible. Review the process after 20 minutes to determine whether there are any neuroactive symptoms (arm numbness). Based on the patient's symptoms and the thickness of subcutaneous fat in the location, you may consider a further period of treatment.

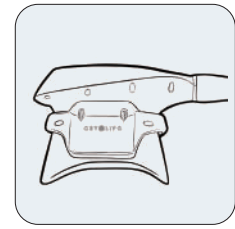
3 Instructions

1. Handpiece Replacement Instructions

Two handpieces are available. The flat-type handpiece can be used on most flatter of the body areas. The wing-type handpiece is designed specifically for areas with more significant subcutaneous fat.



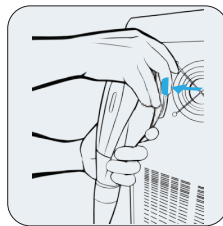
Flat Type



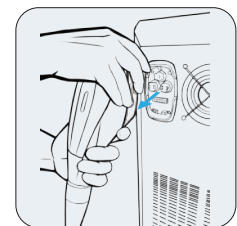
Wing Type

2. Disconnecting Handpieces

Press the connector switch on both sides.



Pull the handpiece straight out while pressing the connector switch.

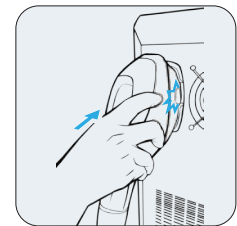


3. Connecting Handpieces

Before connecting the handpiece, make sure you release the connector by pressing the fixing clip on the back of the handpiece as shown.

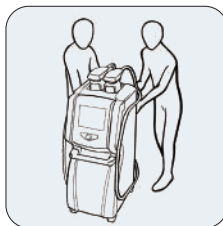


To attach the handpiece connector, hold it with the handpiece cable pointing down and push it into the receptacle until you hear a clicking sound.

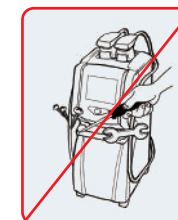
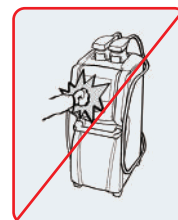
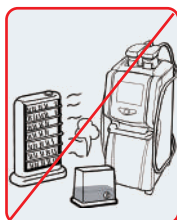
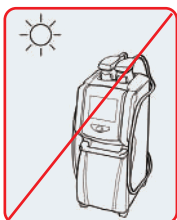


⚠ Caution

When moving the CLATUU system, you must ensure the connector does not bump into any fixed objects or walls. We recommend that you always use two people to move the system.



DO NOT pull on the handpiece connectors to move this system.



This system is intended for indoor and dry location use. Avoid liquid spills and splashes. Do not place the system where it might be exposed to direct sunlight, high humidity, strong wind or heavy dust. Do not place heaters near the system. Do not lean obliquely over the system. Do not subject the system to any external shocks.

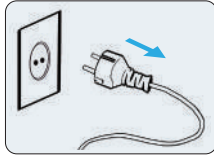
CLATUU™ Quick Manual

4 System Warning Signs and Instructions

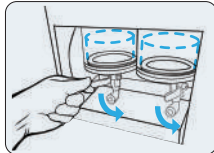


Oil is full (Remove the oil from the oil tank)

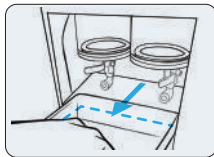
1. Remove the power cord from the wall.



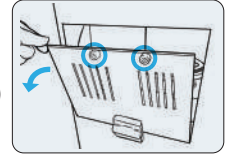
3. Open the oil valve. (Push it down)



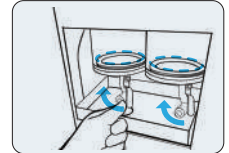
5. Pull out the oil tank and empty it.



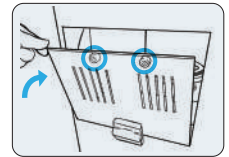
2. Open the oil cover at right side. (Turn anticlockwise)



4. Lock the oil valve. (Pull it up)

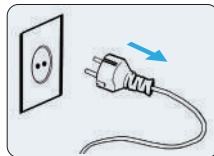


6. Close the oil cover. (Turn clockwise)

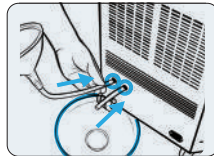


Water Level Sensor Error (Lack of water - Refill water into a water tank)

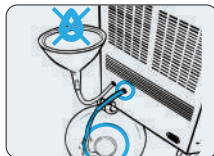
1. Remove the power cord from the wall.



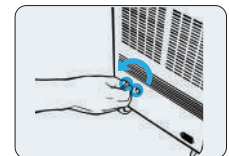
3. Insert a water funnel to one of water inlet holes



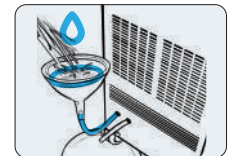
5. Stop filling when the water flows out of the second water inlet hole.



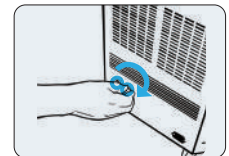
2. Turn both water inlets on the rear of the main unit counter clockwise as far as they will go.



4. Fill up water using funnel

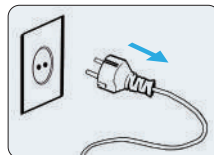


6. Lock the water inlets by turning clockwise as far as they will go.



Communication Error (Bad connection of Hand-piece - Reconnection of Hand-piece)

1. Remove the power cord from the wall.



3. Pull out the handpiece while pressing the connector switch buttons.



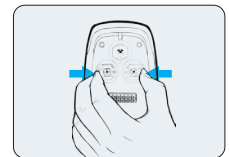
5. Hold the centre of the handpiece connector and push it.



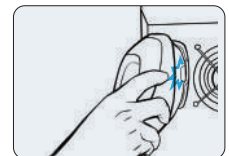
2. Press the connector switch button on both sides



4. Press the fixing clip on the back side



6. Push the Hand-piece into the receptacle until you hear clicking sound



5 Other Reminders

Please observe the following:

- Read the procedure manual carefully and follow all instructions exactly.
- Only fully trained personnel should use this system. Untrained operators should be under the supervision of an expert at all times.
- To avoid any possible side effects, please follow the procedures and instructions in the manual. The reported side effects in the clinical evaluation were mild and transient in nature. However, the following symptoms could occur temporarily: mild pain, bruising, numbness, stiffness. (Bruises usually disappear within 4 days of the procedure.) It is also possible for the patient to experience the following temporary symptoms after the procedure: pain, frostbite, scab, or neurological problems. Careful adherence to the correct procedure will minimise the possibility of any adverse side effects.
- Any person with the following symptoms must consult a medical doctor before undergoing this procedure: skin disorders, blood coagulation disorders, autoimmune diseases, coldness allergies, cryoglobulinemia. In addition, pregnant women or people with a BMI score of less than 18 should not undertake this treatment without medical advice.
- This procedure is not appropriate for children.
- This procedure is not appropriate for very sensitive areas of skin.
- Do not operate the system near anaesthetic gas or flammable materials.
- The specially designed 360 Shield Gel Pad for this system must be used.
- Do not move the system during treatment, as it could cause system errors.
- During the procedure, ensure that the edges of the Gel Pad protrude beyond the hand piece area. If the hand piece moves, you must stop the procedure and reposition the Gel Pad and hand piece.
- Do not operate the system if the hand piece is resting on the patient's body at an angle greater than 45° .
- If any problems occur, stop the procedure, ensure the patient is safe and comfortable, and take any other action appropriate for the patient's wellbeing.
- If the system malfunctions, stop the procedure using the emergency switch and unplug the power cable. Contact the system manufacturer for further assistance.
- To avoid gel inflow to the hand piece, use only the designated Gel Pad provided by the manufacturer.
- Clean the hand piece with alcohol, and ensure it remains clean at all times.
- Do not bend the hand piece cable excessively.
- No disassembly or modification of this equipment is permitted.
- Turn off the power switch when the system is not in use.