



# SLIMSPEC™

---

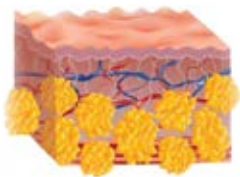
Cellulite and body firming treatments  
using ground-breaking  
Acoustic Radial Wave Therapy



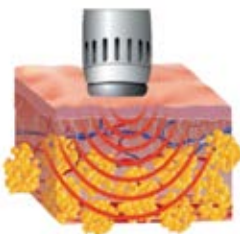
Slimspec uses state-of-the-art medical Acoustic Radial Wave Therapy (ARWT) to treat cellulite. It smooths and firms your skin, and helps to restore its youthful suppleness.

Enjoy the benefits of this groundbreaking technology with confidence:

- Proven clinical results
- Easy to operate, non-invasive, painless and reliable
- No downtime after treatment



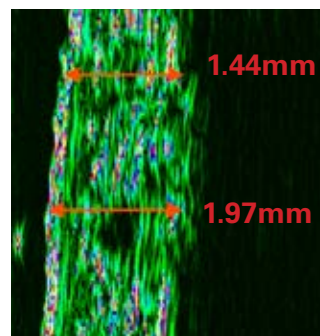
The uneven appearance of the skin known as cellulite or "orange peel syndrome" is caused by the herniation of subcutaneous fat within fibrous connective tissue.



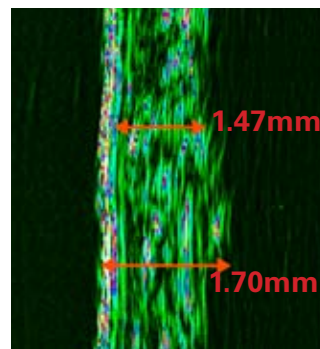
Slimspec generates acoustic waves that help release the fluids and toxins retained within the fat cells. This in turn helps to reduce the puffiness of the skin.



As the fat cells release their fluids and toxins they are able to return to a more normal size, and the skin becomes smoother and firmer.



66 yr-old patient: pre-treatment



66 yr-old patient: post-treatment

High frequency ultrasound Doppler examination shows an increased density in the network of collagen fibres.

Skin thickness reduced from 197mm to 170 mm.

## SLIMSPEC TREATMENT PARAMETERS

Cellulite Level	Cellulite I	Cellulite II	Cellulite III
Number of sessions	8-10	9-12	10-14
Applications per week	2-3	2-3	2-3
Frequency	10-14 Hz	10-16 Hz	10-16 Hz
Power level (I / II / III)	60-120 mJ	90-120 mJ	90-120 mJ
Radial pulses per applicaton (per area)	2500 to 3000	2500 to 3400	3200 to 3700

Stretch Marks	Hips	Thighs	Buttocks
Number of sessions	10-12	10-12	10-12
Applications per week	2-3	2-3	2-3
Frequency	12-16 Hz	12-16 Hz	12-16 Hz
Power level (I / II / III)	80-120 mJ	90-120 mJ	90-120 mJ
Radial pulses per applicaton (per area)	1500 to 2000	1800 to 2300	1800 to 2300

# SLIMSPEC COMPLEMENTS AND ENHANCES OTHER TREATMENTS

General skin tightening	
Frequency	12-16 Hz
Power level (I / II / III)	90-120 mJ
Radial pulses per applicaton (per area)	2000-4000

Before and after RF treatment (fat reduction / skin tightening)	
Frequency	14-16 Hz
Power level (I / II / III)	90-120 mJ
Radial pulses per applicaton (per area)	100 pulses per cm <sup>2</sup>

Before and after laser lipolysis (non invasive) for fat reduction	
Frequency	12-16 Hz
Power level (I / II / III)	90-120 mJ
Radial pulses per applicaton (per area)	3000 to 3500

Skin tightening after injection lipolysis: thighs and buttocks	
Number of sessions	5-8
Applications per week	3-4 weeks after lipolysis: once a week
Frequency	12-16 Hz
Power level (I / II / III)	90-120 mJ
Radial pulses per applicaton (per area)	5000-7000

Skin tightening after injection lipolysis: upper arm	
Number of sessions	5-8
Applications per week	3-4 weeks after lipolysis: once a week
Frequency	10-16 Hz
Power level (I / II / III)	120-150 mJ
Radial pulses per applicaton (per area)	100 pulses per cm <sup>2</sup>

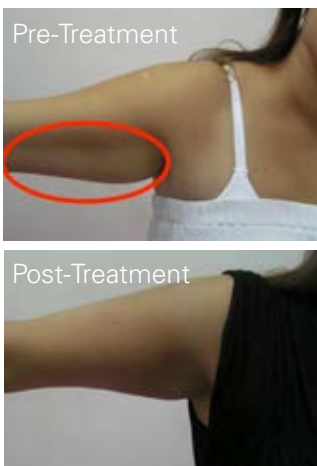
After Clatuu Treatment	Hips (love handles)	Lower abdomen	Thighs /buttocks	Upper arm
Number of sessions	4-6	4-6	4-6	4-6
Applications per week	1-2	1-2	1-2	1-2
Frequency	12-16 Hz	12-16 Hz	12-16 Hz	12-16 Hz
Power level (I / II / III)	90-120 mJ	90-120 mJ	90-120 mJ	90-120 mJ
Radial pulses per applicaton (per area)	2000-2500	2300-2800	3000-3800	1800-2300

After ultrasound treatment (fat reduction / skin tightening)	
Frequency	12-16 Hz
Power level (I / II / III)	90-140 mJ
Radial pulses per applicaton (per area)	100 pulses per cm <sup>2</sup>

Before and after ultrasound (fat reduction/skin tightening)	
Frequency	10-16 Hz
Power level (I / II / III)	90-140 mJ
Radial pulses per applicaton (per area)	100 pulses per cm <sup>2</sup>



- Cellulite treatment
- Skin elasticity and firmness improvement
- Gradual visible smoothing of the skin surface
- Circumferential reduction
- Post-Cryolipolysis treatments
- Deep tissue massage
- Lymphatic drainage
- Muscle toning



Slimspec treatment helps to increase fluid exchange in the capillary network and this in turn increases oxygenation and detoxification of the cells. The fibroblasts that create the connective tissue are stimulated to produce collagen and elastin fibres, so the skin becomes firmer, and that uneven 'orange peel' effect is reduced.

Treatments take approximately 20 minutes; the recommended protocol is twice per week for 6 weeks, then one maintenance treatment every 3 months. There is no downtime after treatment.



Pre-Treatment

Post-Treatment

## TECHNICAL DATA

Technology	Compressor-free ballistic Radial Pulse Technology with eletromagnetic generator as projectile accelerator.
Maximal Energy	1 - 160mJ
Frequency Hz	1, 7, 10, 16Hz
Pressure	Up to 3 MPa
Programs	Three preset application fields plus respective detailed application recommendations
Control Unit	Adjustable controllers for energy and frequency. Handpiece operation via multi-directional foot switch.
Voltage	100-240 V / 50/60Hz; 220V / 60Hz
Main Unit Dimensions	Width: 365mm    Height: 170mm    Depth: 330mm
Handpiece	Ergonomic handpiece with High Mass for ample interia to deliver optimal energy transfer to patient.    Diameter: 39mm    Length: 211mm    Weight: 750g
Warranty	2 years limited warranty on system, 2 million pulses on handpiece.