

January 2016



SLIMSPEC

PROFESSIONAL SYSTEM FOR CELLULITE &
BODY FIRING TREATMENTS



GROUNDBREAKING TECHNOLOGY
Within Your Reach

Contents

- About Medispec
- Cellulite
- Slimspec System
- Clinical Case Results
- Future Applications
- Marketing
- System Components
- Summary
- Appendix
 - Slimspec Awards
 - Acoustic Radial Wave Technology (ARWT)
 - Sample Protocol
 - Miscellaneous

Medical Technology Now in Aesthetics

Professional system for cellulite and body firming treatments based on Acoustic Radial Wave Therapy (ARWT)



 MEDISPEC

About Medispec

- Founded in 1992
- Innovators in the SWT for Erectile Dysfunction
- Specializes in shockwave-based systems for the fields of Urology, Cardiovascular and Orthopedics
- **Global leaders in low intensity SW treatments**
- **A leader in installations of ESWL systems in the U.S.A. since 2001**
- Thousands of medical systems installed worldwide

Our Vision:

To improve quality of people's lives everywhere, through meaningful profitable innovations

Our Mission:

To continuously explore new medical applications where Shockwave Therapy can be used to heal and better people's lives, wherever it's needed



Products Lines



UROLOGY

E3000 & EM1000

Extracorporeal Shock Wave
Lithotripter



SEXUAL MEDICINE

ED1000

revolutionary treatment for ED
Erectile Dysfunction Shock Wave Therapy



CARDIOLOGY

Cardiospec

SWT for Cardiac Ischemic
Diseases



AESTHETICS

Slimspec

RWT for Cellulite
Treatments



ORTHOPEDIC

Orthospec

Orthopedic ESWT



THERMOTHERAPY

Thermaspec

Thermotherapy for
Prostate Problems

Slimspec Highlights

- Cellulite treatment based on Acoustic Radial Waves Technology (ARWT) with proven clinical results
- Non-invasive, painless, safe and effective
- Easy to operate system, non-invasive, reliable and effective
- No downtime after procedure
- Low-cost consumables and fast treatments, fast return on investment (ROI)



No One is Safe from Cellulite



Donatella
Versace



Sharon
Stone



Pamela
Anderson



Paris
Hilton



Britney
Spears

* Source: <http://nomore-cellulite.com/go/pictures-of-celebrity-with-cellulite>

Cellulite Characteristics

- Unaesthetic aspect of the skin: rough, uneven, dimpled
- Orange peel / Cottage cheese appearance
- Cosmetic condition very common among **90% of women over 18 years old**, mostly in the areas of thighs and buttocks, abdomen and arms



More Info





Slimspec System

Applications

- Cellulite treatment
- Skin elasticity improvement
- Body firming
- Circumference reduction
- Deep tissue massage
- Lymphatic drainage
- Muscle toning



Sample protocol

Benefits

- Gradual smoothing of skin surface with a noticeable reduction in cellulite
- Increased firmness and lifting of the skin
- Circumferential reduction (up to 5 cm)
- Long-lasting treatment effect (up to 6 months post treatment)

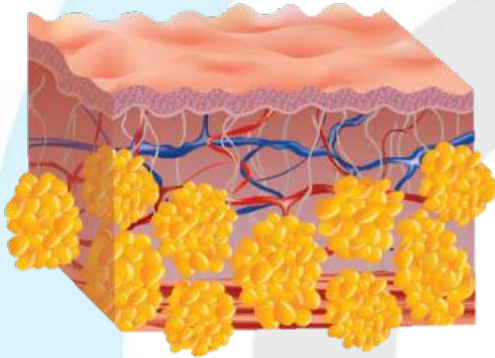


Why Slimspec?

- Visible results
- Painless, non-invasive treatment
- No downtime after treatment
- Fast ROI (return on investment)
- Easy to operate
- Complies with international standards (FDA listed, CE cleared)

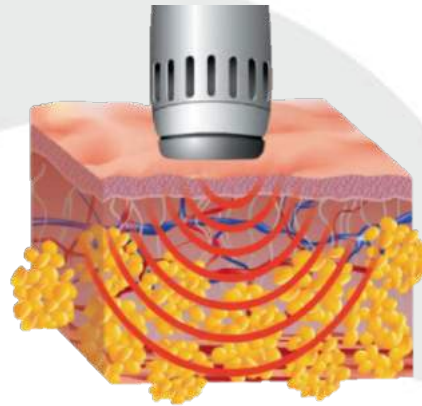
How does Slimspec work?

Before



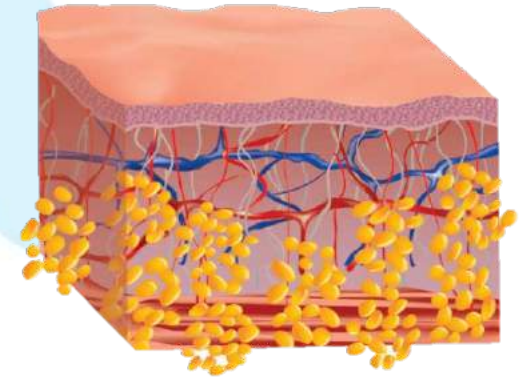
Cellulite describes a condition that occurs mainly in adult women and may affect up to 90% of them, regardless of race, health condition or body weight

During



The acoustic radial waves were adapted to efficiently treat dermatologic and cosmetic conditions

Post Treatment



Slimspec treatment effect is visible after only few treatments. The initial indication of improvement is the increased skin firmness as well as the velvety smoothness of the treated area



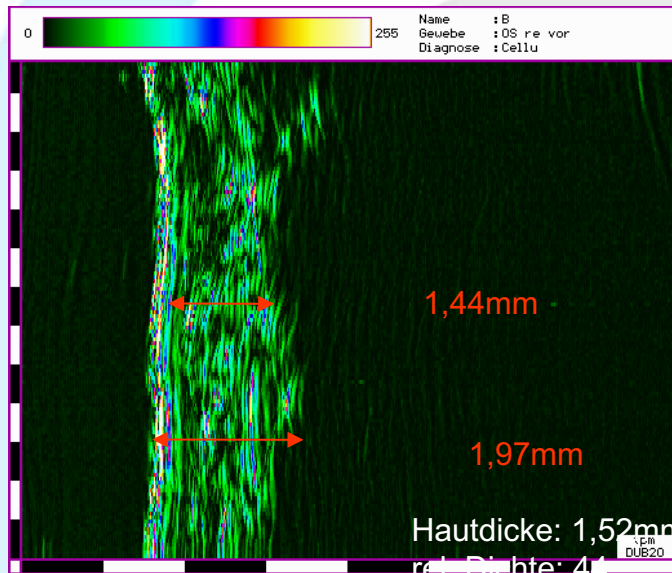
Clinical Case Results

Results

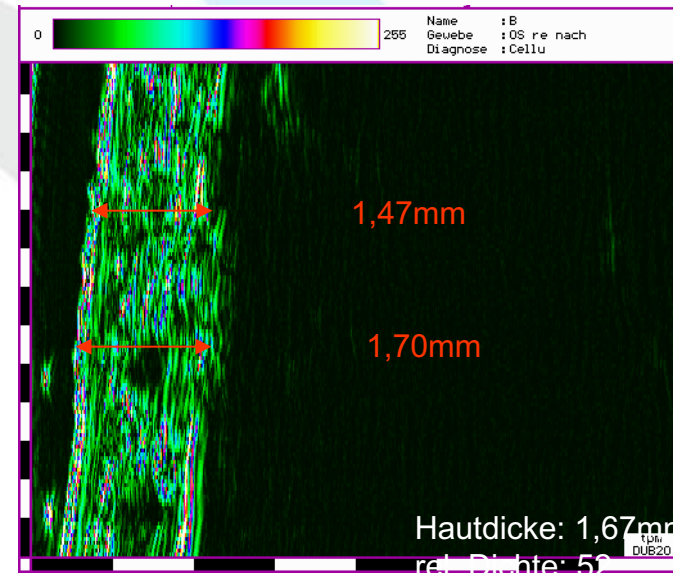
- The success criteria is measured by the skin firmness, photo evaluation and overall satisfaction
- Results show a clear improvement of cellulite condition and skin firmness

Results

Pre – Treatment



Post – Treatment

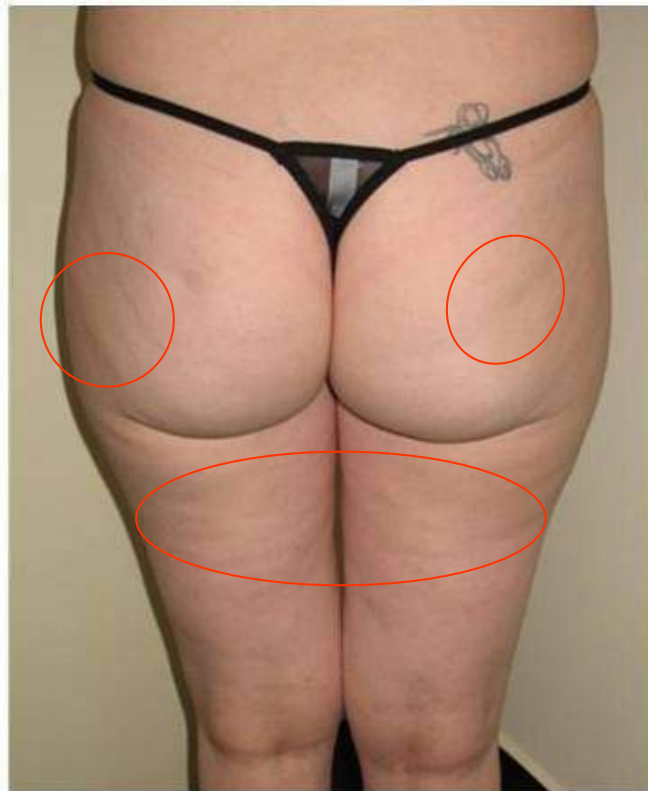


- S.I. 66yr.
- High frequency ultrasound Doppler examination shows an increased density in the network of collagen fibers
- Skin thickness reduced from 197 mm to 170 mm

* Courtesy of Prof. Klaus Fritz MD, Medical director of dermatology and laser centers Landau and Kandel / Germany Consultant dermatologist University clinics Bern / Switzerland Study ILM Ulm, Germany 2009

Results (cont.)

Pre – Treatment



Post – Treatment



- M.B. 40 yr.

Results (cont.)

Pre – Treatment

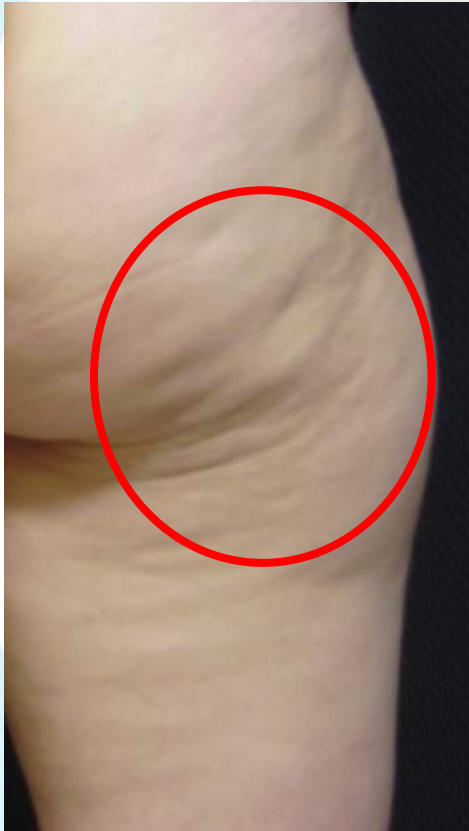
Post – Treatment



- N.S. 45yr.

Results (cont.)

Pre – Treatment



Post – Treatment



Results (cont.)

Pre – Treatment



Post – Treatment



Results (cont.)

Pre – Treatment



Post – Treatment



Results (cont.)

Pre – Treatment



Post – Treatment



*4 cm
less



Future Applications

Future Applications

Pre – Treatment



Post – Treatment



Future Applications (cont.)

Pre – Treatment



Post – Treatment



Future Applications (cont.)

Stretch Marks



Spider Veins





Marketing

Potential users

- Beauty salons
- Cosmetologists
- Beauty clinics
- Medispas
- Dermatologists
- General practitioners (“family doctors”)



Economic Parameters

- General:

Relative - Rental & other office expenses (electricity , water, office-consumables, salaries etc. =XX\$

- Specific for Slimspec:

- Cost of device
- Consumables (Each patients gets 100,000 shocks):
 - Hand piece
 - Tip
 - Membrane
 - Cream

Business Plan: Income

- Treatment Protocol consists of 12 sessions per patient = 12 visits
- Payment per visit & treatment = XXXXX\$



System Components

Slimspec System Components



Slimspec

Professional system for cellulite and body firming treatments, setting the Tone for Cellulite Control



MEDISPEC



THANK YOU

marketing@medispec.com





Appendix

Slimspec Awards & Global Presence

The H. Pierantoni Innovation Prize Goes To...



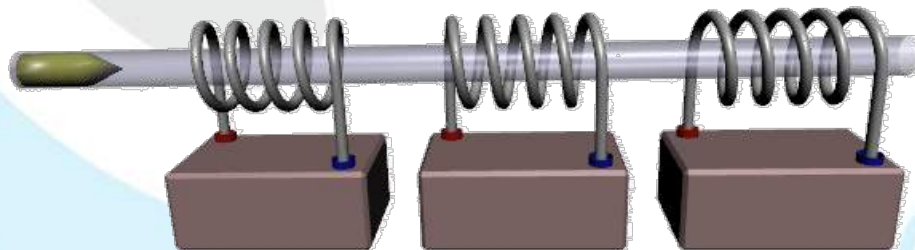
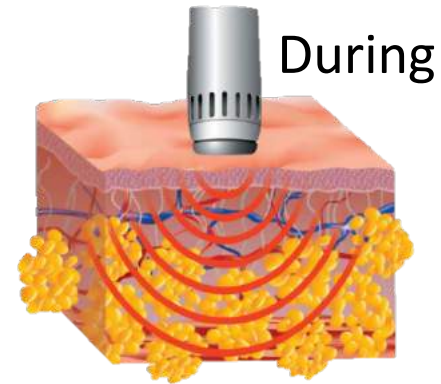


Appendix


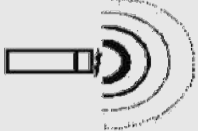
Acoustic Radial Wave Technology (ARWT)

Acoustic Radial Wave Technology (ARWT)

- Unfocused low pressure acoustic waves are created by an electromagnetic ballistic mechanism
- The electromagnetic energy creates a ballistic motion of the applicator (e.g. jack hammer)
- The pressure waves are transmitted through the surface of the skin and spread radially (spherically) into the tissue effecting a large and deep treatment area

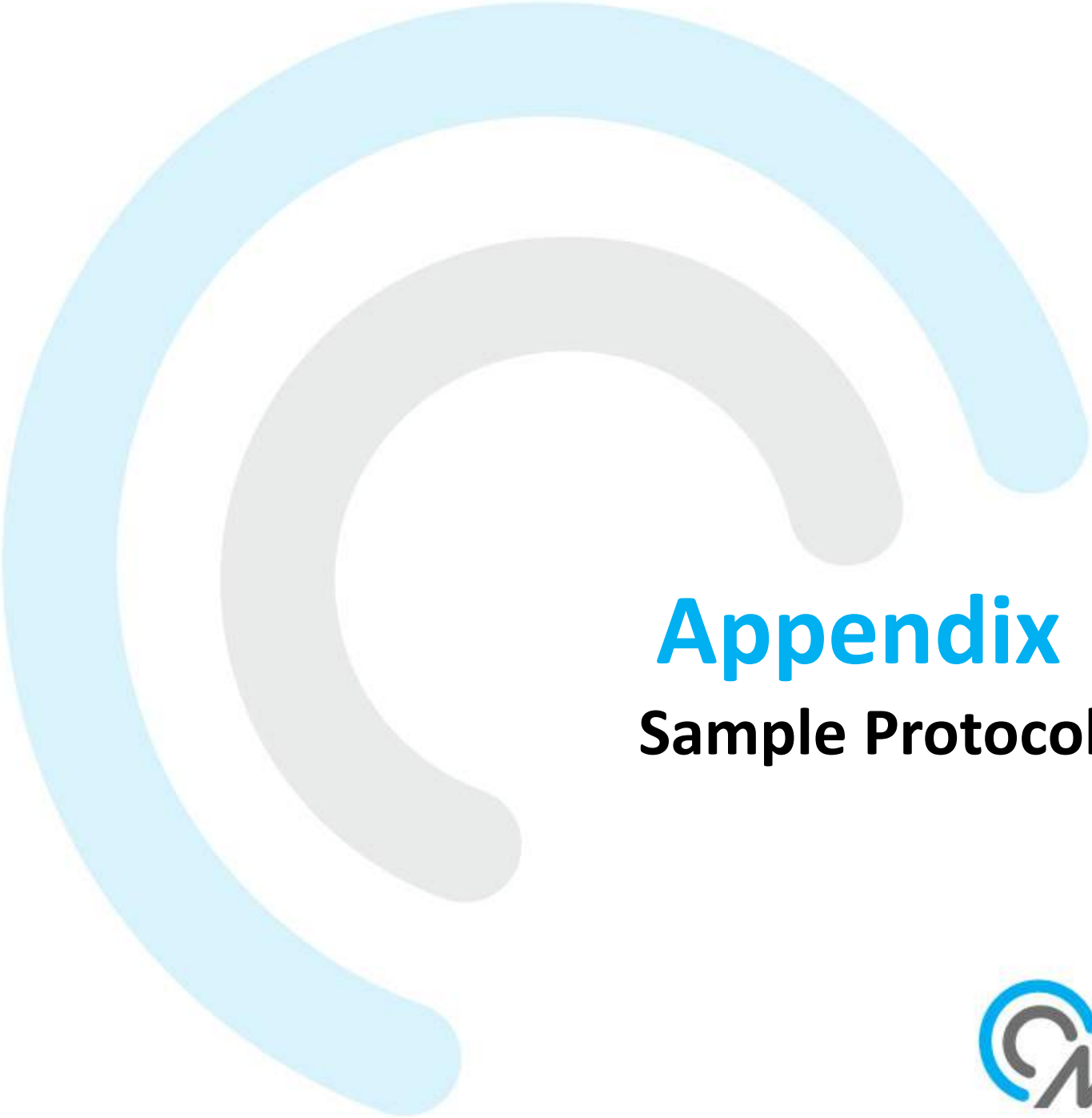


ARWT Physical Background

Wave	Unfocused
Maximal Energy	On surface
Mechanical Effect	The deeper the tissue the lower the pressure
Pressure	Up to 3 MPa
Rise Time	1000 μ sec
Penetration Depth	0-20 mm
Pressure of Wave Relative To Time	
Diagram of Pressure Wave Within Tissue	

ARWT Mechanism of Action

What Can Acoustic Radial Waves Do?	How Can It Decrease Cellulite Severity?
Mechanical Massage	Improving lymph circulation, decreasing fat cells oedema
Increased local blood flow	Increased fluid exchange in the capillary network assist in the movement of fluids back into the vascular and lymphatic system, increasing oxygen and detoxification
Stimulation of fibroblasts	The fibroblasts create the connective tissue and when stimulated they produce collagen and elastin fibers so the skin is firmer and less bulged
Neovascularization	Increasing “normal” metabolism of the area, induces an anti-oxidative effect and less fibro sclerotic effect of the connective tissue (septa)

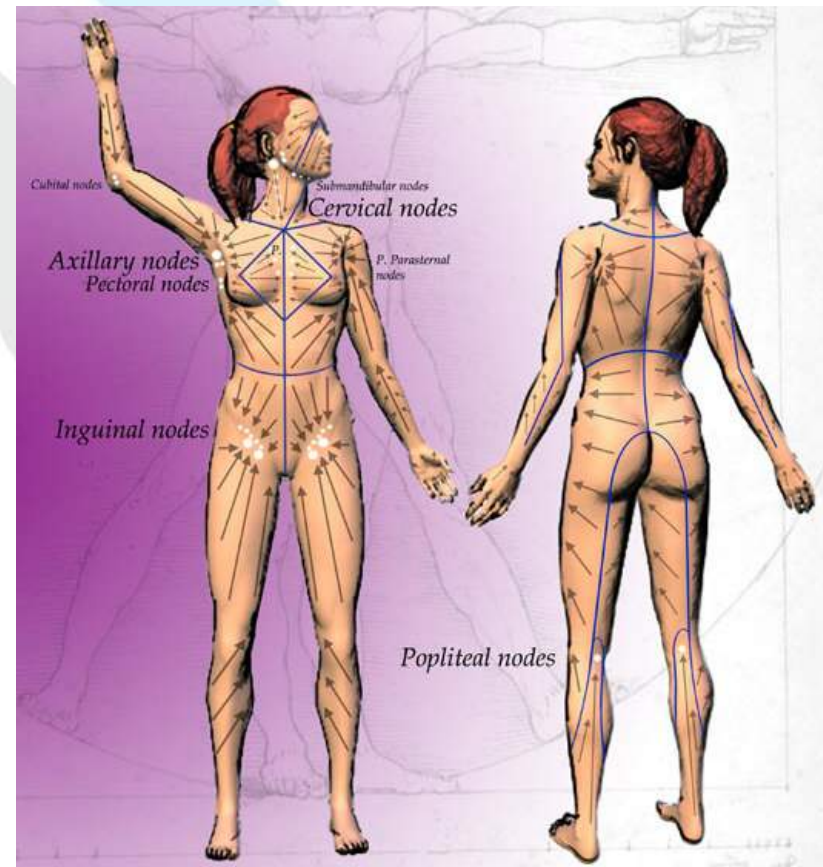


Appendix

Sample Protocol

Treatment Protocol

- Apply cream to the TIP and to the patient's skin area to be treated
- The applicator is moved along the skin to the lymph nodes direction
- Each treatment will be set to 4000 pulses per area
- Energy level: 2 or 3 depending on cellulite severity



Treatment Protocol

- Repeat treatment twice a week for as long as needed
- Treatment duration: approx. 15 minutes
- Visible results after 7-9 treatments



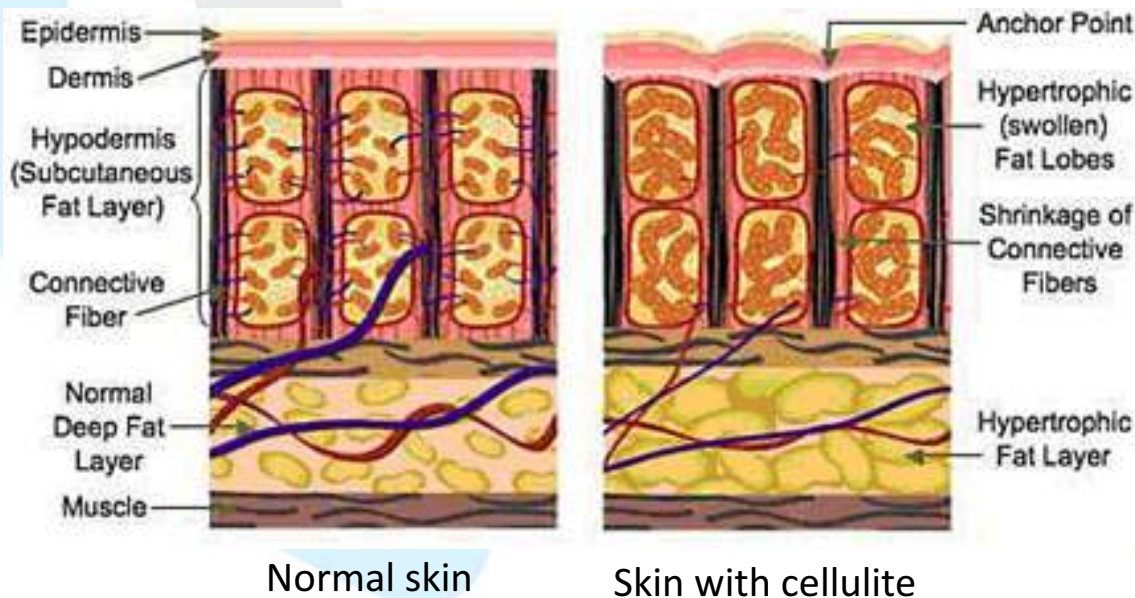


Appendix

Miscellaneous

How Cellulite Develops? What is Cellulite?

- Poor blood and lymph circulation
- Fat cells inflate in the Hypodermis and are pushed up to the Epidermis
- The skin connective tissue surrounding the fat chambers (septa) loses elasticity and gets weaker and rigid
- Fluids containing toxins are not properly drained and get stuck (water retention)



Cellulite – Contributing Factors

- Hormonal changes, pregnancies
- Genetics
- Unhealthy eating habits, detrimental diets, insufficient water drinking
- Lack of exercise
- Wearing uncomfortable shoes and even unfit clothes



Other Treatment Modalities

- Lymphatic massage
- Anti-cellulite cream
- Diet
- Wrapping
- Electro Stimulation
- Endermologie
- Radio Frequency
- Laser
- Ultrasonic
- Mesotherapy / Ozon
- Liposuction

Slimspec Contraindications

- Pregnant women
- Known malignancy or chemotherapy
- Skin disease
- Thrombosis or post-thrombosis syndrome
- Anti-coagulation therapy
- Cortisone therapy
- Known metabolic disorder (Diabetes Mellitus, Hypercholesterolemia, etc.)
- Inflammation within treatment area