

AQUAPURE II

Smart Genuine Facial Care System



Go Pure
Be Youth

Components and Features



Main Body



PEEL+



SEBO+



REJUVE+



CLEANSYS



AD Peel Tip



AQUA MF Needle Tip



Cleaning Cap



Air Filter



Waste Container



AC Power Cable



Footswitch



Eye Shield



AQUA Hand-Piece



Diamond Hand-Piece (option)



LIGHRPURE Hand-Piece

Table of Contents

Components and Features

Maintenance Procedures

- Cleaning the Main Body and Hand-pieces
- Changing the Air Filter
- Storage of the AQUAPURE II

Hand-piece Management

- Suction of the AQUA Peel Hand-piece (AD Peel and AQUA MF Needle)
- Disconnecting AQUAPURE II Hand-pieces
- Attaching Treatment Tips onto the AQUA Peel Hand-piece and Diamond Hand-piece
- Detaching Tips from the AQUA Peel Hand-piece and Diamond Hand-piece
- Cleaning the AQUA Peel Hand-piece with the Cleaning Cap

AQUASOLUTION Management

- Connecting AQUASOLUTION Bottles
- Disconnecting AQUASOLUTION Bottles

Waste Container Management

- Connecting the Waste Container
- Disconnecting the Waste Container

Footswitch Management

- Connecting the Footswitch
- Conducting Checks on the Footswitch
- Disconnecting the Footswitch

Precautions

- Precautions for Hand-pieces and Cables
- Precautions for the System

Troubleshooting

- Standard Troubleshooting Procedures
- Troubleshooting Chart

AQUAPURE II

MAINTENANCE

The following guidelines are intended for active management of the AQUAPURE II Main Body. Refer to these instructions for a successful maintenance of the AQUAPURE II and its components.



Maintenance Procedures

Cleaning the Main Body and Hand-pieces

When cleaning the AQUAPURE II and its components, ensure that the System is turned OFF and disconnected from a power source for safety purposes.

Main Body

- Cleaning the Main Body is recommended every 2 weeks or on a regular basis.
- Apply 50-70% isopropyl alcohol on a soft cloth and proceed to clean.
- Wipe the smudges and any dirt from the exterior.

Hand-pieces

- Cleaning the Hand-pieces is recommended every 2 weeks or on a regular basis.
- Clean and sterilize the Hand-pieces with a standard 50-70% isopropyl alcohol prep pad.

⚠ Keep the AQUAPURE II Main Body, Hand-pieces, and Cables dry and out of direct contact with any liquids.



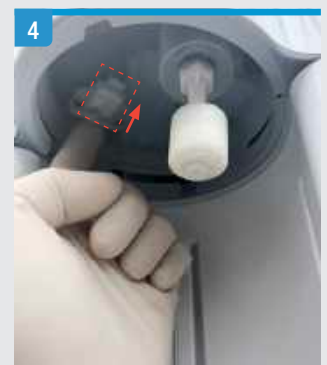
Maintenance Procedures

Changing the Air Filter

A maintenance procedure is required every 6 months to ensure that the suction capabilities of the AQUA PURE II Hand-pieces functions properly.

The Air Filter is inserted into an open slot just above the Waste Container. Refer to the following to properly replace the Air Filter:

- Disconnect the Waste Container from the Main Body.
- Locate the Air Filter above the Waste Container.
- Using your finger, slide and remove the Air Filter out of its slot.
- Insert a new Air Filter into the slot.
- Mark the date with a permanent marker to schedule the next maintenance period.
- Reconnect the Waste Container to the Main Body.



Maintenance Procedures

Storage of the AQUAPURE

Ensure to always store the AQUAPURE II under the following environmental conditions:

- Temperatures of 5°C-60°C
- Relative Humidity of 0%-90%
- Air Pressure of 500hPa-1060hPa

Ensure to allow a clean, safe and sufficient working space for practitioners to operate the AQUAPURE II. Refer to the following System dimensions.



Hand-piece Management

Suction of the AQUA Hand-piece (AD Peel and AQUA MF Needle)

When using the AQUA Hand-piece (AD Peel, AQUA MF Needle), solution distribution may not work immediately after the component is activated. To test for effective solution distribution, refer to the following:

1. Set the parameters on the Graphical User Interface (GUI) and Hand-piece flow to the maximum setting.
 - Vacuum Level: 10 (MAX)
 - Flow Setting: 20 (MAX)
2. Press START and place the AD Peel or AQUA MF Needle Hand-piece firmly on the back of your hand to block any discharge of solutions.
3. After a successful solution cycle of the Hand-piece, commence with the treatment procedure.

If the suction capability of the AQUA Hand-piece is still not suffice, refer to the following:

1. Check that there is a sufficient amount of solution in each AQUASOLUTION bottle.
2. Check that the tubes of the Main Body are not kinked and properly submerged into each AQUASOLUTION bottle.
3. Ensure that the AD Peel Tip or AQUA MF Needle Tip is properly attached to the AQUA Hand-piece.
4. Disconnect and reconnect the Waste Container to ensure that it is locked airtight.
5. Check that the lid to the water filter is firmly locked.
6. If the problem persists, contact the CLUEDERM service team.

AD Peel



AQUA MF Needle



Hand-piece Management

Disconnecting Hand-piece

There are 2 Hand-pieces which are attached to the Main Body.

Slide the Hand-pieces out of their respective Hand-piece Holders and proceed to disconnect the cables from the Main Body one at a time.

When disconnecting AQUA Hand-piece cable, press both sides of cable firmly while pulling down the cable as shown in figure 2 of AQUA Hand-piece.

When disconnecting Diamond Hand-piece, press the connecting part with one hand while pulling down the cable as shown in figure 2 of Diamond Hand-piece

Ensure to keep all cables dry and untangled in a dust-free environment for storage.

AQUA Hand-piece

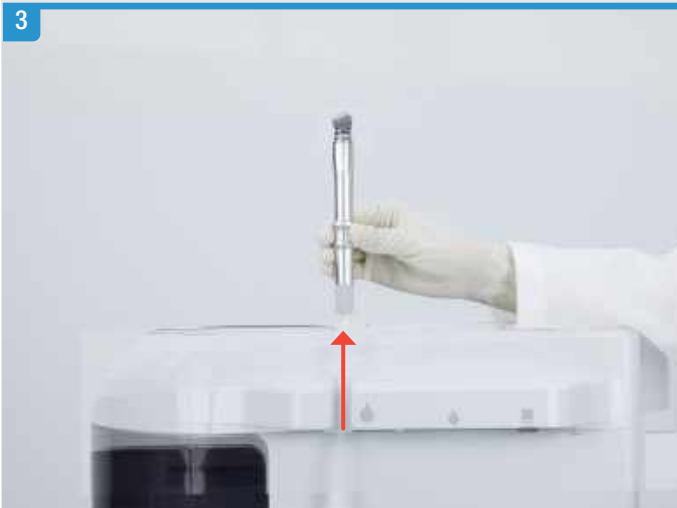
1



2



3



Hand-piece Management

Disconnecting Hand-piece

Diamond Hand-piece

1



2



3



Hand-piece Management

Attaching Treatment Tips and Cleaning Cap

The AQUAPURE Hand-piece treats the patient's skin with Diamond Tip (Dry Abrasion), AD (Aqua + Diamond) Peel Treatment Tips, and AQUA MF (Micro-Focused) Needle Treatment Tip. The Hand-piece also conducts an AQUA cleaning procedure with a Cleaning Cap.

For successful attachment, push down Treatment Tips (AD Peel Tip and AQUA MF Needle Tip) and Cleaning Cap firmly and turn diamond tip clockwise.

Diamond Tip



AD Peel Tip



AQUA MF Needle Tip



Cleaning Cap



Diamond Tip

1



2



AD Peel Tip

1



2



Hand-piece Management

Attaching Treatment Tips and Cleaning Cap

AQUA MF Needle Tip

1



2



Cleansing Cap

1



2



Hand-piece Management

Detaching Treatment Tips and Cleaning Cap

For successful detachment, pull Treatment Tips (Diamond Tip, AD Peel tip, AQUA MF Needle, and Cleaning Cap) from the AQUA Hand-piece. And turn Diamond Treatment Tip anticlockwise.

Store the Treatment Tips and Cleaning Cap in a safe and dust-free environment.

Diamond Tip



AD Peel Tip



AQUA MF Needle Tip



Cleaning Cap



Diamond Tip

1



2



AD Peel Tip

1



2



Hand-piece Management

Attaching Treatment Tips and Cleaning Cap

AQUA MF Needle Tip

1



2



Cleansing Cap

1



2



Hand-piece Management

Cleaning the AQUA Hand-piece with CLEANSYS

The AD Peel Hand-piece and AQUA MF Needle hand-piece require System cleaning procedures with the CLEANSYS solution following the use of both PEEL+ or SEBO+ and REJUVE+ solutions or when the System has been idle for extensive periods of time.

1. Hold the AQUA Hand-piece out of its Hand-piece Holder. The Graphical User Interface (GUI) will change to the AQUAPURE II Interface if the Hand-piece Automatic Recognition function is activated or manually select AQUA icon on the bottom of the Graphical User Interface (GUI).
2. Attach the Cleaning Cap onto the AQUA Hand-piece and ensure that there is a sufficient amount of CLEANSYS solution in the bottle connected to the Main Body.
3. Select 'C' on the GUI and press START to commence with the cleaning cycle.
4. Place the AQUA Hand-piece back onto its Hand-piece Holder until completion of the cleaning cycle (duration: 1 minute).

*All settings for CLEANSYS are set by default.



AQUASOLUTION Management

Connecting AQUASOLUTION Bottles

Receivers for attaching AQUASOLUTION bottles (4x) to the Main Body are located just below the AQUAPURE II Graphical User Interface (GUI) with a tinted, plastic cover.

Uncap each AQUASOLUTION bottle one at a time and insert the tube into each bottle. Align the bottle with the receiver of the Main Body and turn right until it is firmly inserted.

1. PEEL+
2. SEBO+
3. REJUVE+
4. CLEANSYS



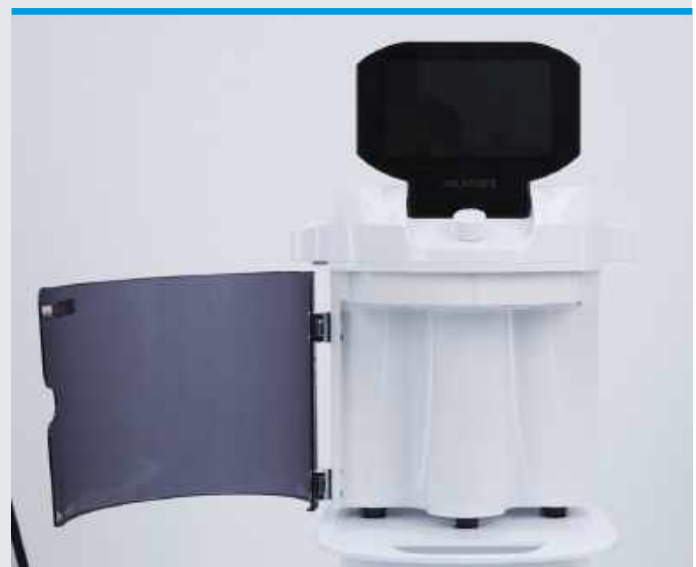
AQUASOLUTION Management

Disconnecting AQUASOLUTION Bottles

Open the tinted, plastic cover of the Main Body. Turn each bottle to the left for proper disconnection. Slowly pull down the bottle as the tube can spatter if not removed with caution.

Wipe down each tube with a clean cloth after the bottle is safely removed.

Cover each AQUASOLUTION bottle with their respective bottle caps after safe disconnection from the Main Body.



Waste Container Management

Connecting the Waste Container

The Waste Container receives wastewater following each AQUAPURE II procedure.

For successful connection to the rear of the Main Body, adjust the Waste Container in center position with the open slot.

After securing center position with the Main Body, hold the Waste Container up and turn right to fully lock into the System.

⚠ If the Waste Container is not securely locked, the suction capabilities of the AQUA Hand-piece will not work effectively.



Waste Container Management

Disconnecting the Waste Container

For successful disconnection of the Waste Container from the rear of the Main Body, turn the container handle to the left until it is at center position with the Main Body.

Gently lower the Waste Container with caution to prevent wastewater from spilling.



Footswitch Management

Connecting the Footswitch

Connect the Footswitch Cable to the outlet located on the right side of the Main Body. For optimal user convenience, step on the component pedal of the Footswitch to START or STOP all procedures of the AQUAPURE II. Align the Hand-piece Cable with its respective outlet to ensure a successful connection.

Conducting Checks on the Footswitch

Check that the Footswitch Cable is connected firmly to its respective outlet on the Main Body. Select any Hand-piece of the AQUAPURE II and conduct a START and STOP test by stepping on the component pedal.

Disconnecting the Footswitch

To deactivate the manual START and STANDBY function, disconnect the Footswitch Cable from the outlet.



Precautions

Precautions for Hand-pieces and Cables

In order to maintain the condition of Hand-piece Cables, perform the following precautionary measures:

- Check to slide each Hand-piece into its respective Hand-piece Holder when the System is idle.
- Ensure that cables are not entangled to avoid safety hazards or Hand-piece malfunctions from occurring during treatments.
- Check that all Hand-pieces are placed into their respective Hand-piece Holders properly for the Hand-piece Automatic Recognition to function accordingly.

*Hand-piece Cables should not be submerged in liquid at any time.

When the Hand-piece Automatic Recognition function does not activate a Hand-piece of the AQUAPURE II, perform the following precautionary measures:

- Check that all Hand-pieces are properly placed into their respective Hand-piece Holders.
- Ensure that all cables are not entangled.
- Check the Settings of the AQUAPURE II and confirm if the Hand-piece Automatic Recognition is turned ON.

Placement of Hand-pieces



Precautions

Standard Troubleshooting Procedures

Precautions for an Idle System

If the AQUAPURE II has been idle for extensive periods of time, it may require some precautionary measures:

- Conduct a cleaning cycle with the CLEANSYS solution for the AQUA Hand-piece.
- Clean the exteriors of the Main Body and Hand-pieces.

*Refer to the section 'Cleaning the Main Body and Hand-pieces' of this Maintenance Guide.

- Check the suction capabilities of the AQUA Hand-piece before proceeding with treatments.

*Refer to the section 'Suction of the AQUA Hand-piece' of this Maintenance Guide.

Procedures with the System OFF

Turn the System OFF as a precaution for the following procedures:

- Connecting or disconnecting Hand-pieces
- Moving the device from one location to another
- Connecting or disconnecting AQUASOLUTION bottles

*To turn the AQUAPURE II System OFF properly, press the 'O' symbol on the Power Switch.

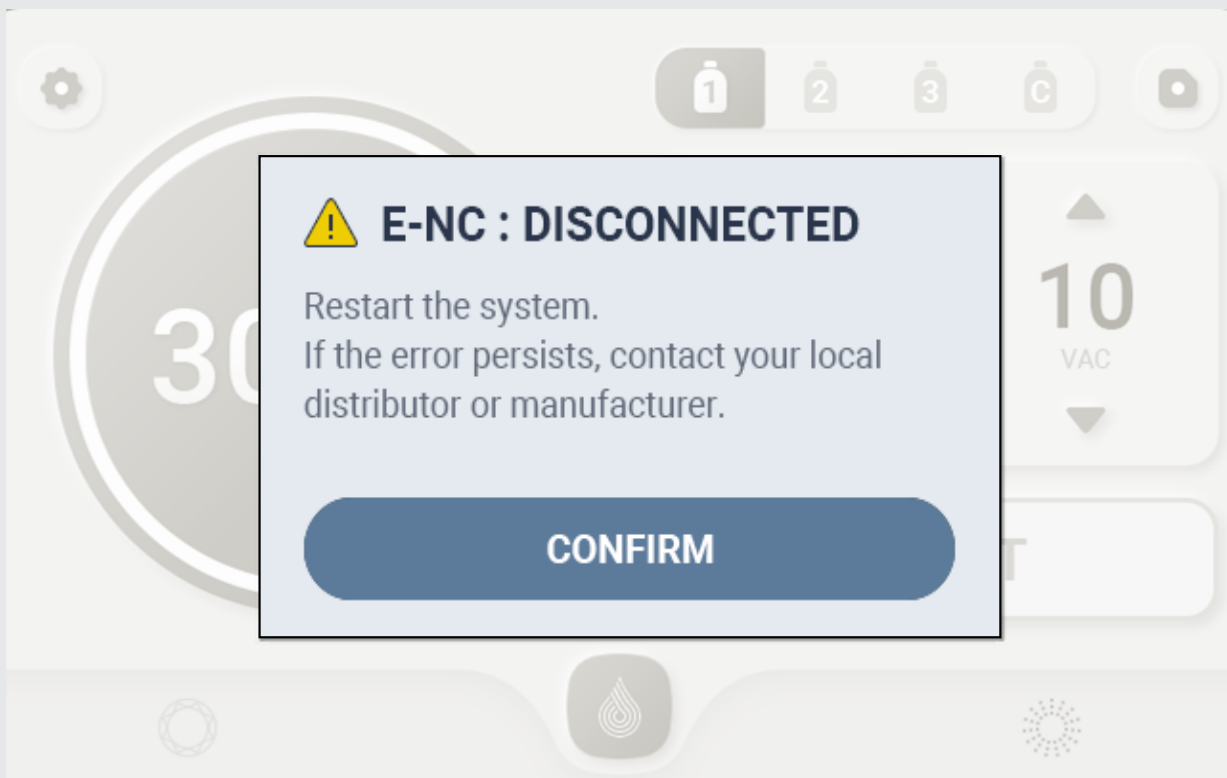
Placement of Hand-pieces



Troubleshooting

Standard Troubleshooting Procedures

The AQUAPURE II is designed with internal checks to ensure that all aspects of the equipment are functioning accordingly. Refer to the troubleshooting chart in this section when System errors occur.



Example of an error occurring on the Graphical User Interface

Troubleshooting

Troubleshooting Chart

No.	Error Message	Description & Corrective Action
1	<p>⚠ E-AO : 003D0010</p> <p>The waste container is full. Please empty the contents before proceeding.</p> <p>CONFIRM</p>	<p>When the waist container is full, the device shows “E-AO : 003D0010”.</p> <ol style="list-style-type: none"> 1. Empty the waist container 2. Turn the system off and restart 3. If the problem persists, contact CLUDERM Service team
2	<p>⚠ E-NC : DISCONNECTED</p> <p>Restart the system. If the error persists, contact your local distributor or manufacturer.</p> <p>CONFIRM</p>	<p>When there is a communication problem between the Base board and GUI board, the device shows “E-NC: DISCONNECTED”</p> <ol style="list-style-type: none"> 1. Turn the system off and restart 2. If the problem persists, contact CLUDERM Service team
3	<p>⚠ E-AQ : 00000000</p> <p>Restart the system. If the error persists, contact your local distributor or manufacturer.</p> <p>CONFIRM</p>	<p>When there is a problem with the Aqua Hand-piece or the main body, the device shows “E-AQ : 00000000”.</p> <ol style="list-style-type: none"> 1. Check the AQUAPURE II hand-piece to see any abnormality 2. Turn the system off and restart 3. If the problem persists, contact the CLUEDERM service team
4	<p>⚠ E-DQ : 00000000</p> <p>Restart the system. If the error persists, contact your local distributor or manufacturer.</p> <p>CONFIRM</p>	<p>When there is a problem with the Diamond Hand-piece or the main body, the device shows “E-DQ : 00000000”.</p> <ol style="list-style-type: none"> 1. Check the Diamond Hand-piece to see any abnormality 2. Turn the System OFF and restart. 3. If the problem persists, contact the CLUEDERM service team.
5	<p>⚠ E-LQ : 00000000</p> <p>Restart the system. If the error persists, contact your local distributor or manufacturer.</p> <p>CONFIRM</p>	<p>When there is a problem with the LIGHTPURE Hand-piece or the main body, the device shows “E-LQ : 00000000”.</p> <ol style="list-style-type: none"> 1. Check the LIGHTPURE Hand-piece to see any abnormality 2. Turn the System OFF and restart. 3. If the problem persists, contact the CLUEDERM service team.

Refer to additional training material for the proper and professional use of the AQUAPURE.

- Installation Guide
- Treatment Guide
- Quick Operation Guide
- Operation Manual

For further enquiries contact:

info@cluederm.com

MAINTENANCE GUIDE

Manufacturer CLASSYS Inc.

Tel +82-2-517-2114 **Fax** +82-2-6008-3457

Website www.cluederm.com **E-mail** info@cluederm.com