

AQUAPURE

Smart Genuine Facial Care System



Go Pure
Be Youth

Table of Contents

Components and Features

Assembly

1. Inserting Water
2. Connecting Hand-pieces
 - AQUAPEEL
 - COOLING/HEATING
 - ELECTROPORATION
 - MICRO-CURRENT
3. Attaching Treatment Tips and Cleaning Cap
4. Connecting the Waste Container
5. Connecting AQUASOLUTION Bottles
6. Connecting the Footswitch
7. Turning the System ON
8. Circulating Water into the System
9. Inserting Additional Water

Disassembly

1. Turning the System OFF
2. Draining Water
3. Detaching Treatment Tips and Cleaning Cap
4. Disconnecting the Footswitch
5. Disconnecting Hand-pieces
6. Disconnecting the Waste Container
7. Disconnecting AQUASOLUTION Bottles

Components and Features



Main Body



Large Tip (5x)



Small Tip (5x)



Cleaning Cap (2x)



PEEL+



SEBO+



REJUVE+



CLEANSYS



Waste Container



Plastic Tube



AC Power Cable



Footswitch



AQUAPEEL
Hand-Piece



MICRO-CURRENT
Hand-Piece



ELECTROPORATION
Hand-Piece



COOLING/HEATING
Hand-Piece

AQUAPURE

ASSEMBLY

The following content details instructions to assemble the AQUAPURE Main Body.
Refer to these instructions in respective order for a successful assembly of the AQUAPURE and its components.



Assembly

1. Inserting Water

Before inserting water into the Main Body, ensure that the System is turned OFF for safety purposes.

Outlets (2x) under DRAIN and VENT are located at the lower left rear of the Main Body.

The lid to the filter for inserting water is located at the top of the Main Body.

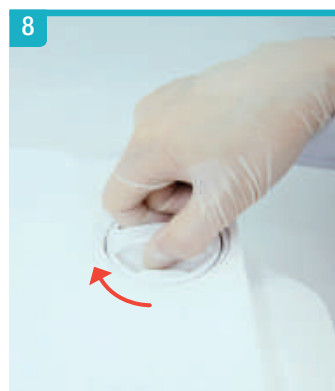
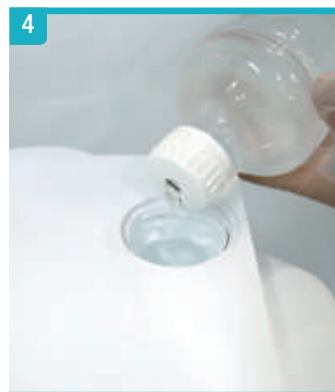
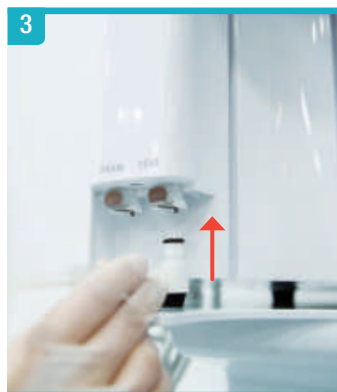
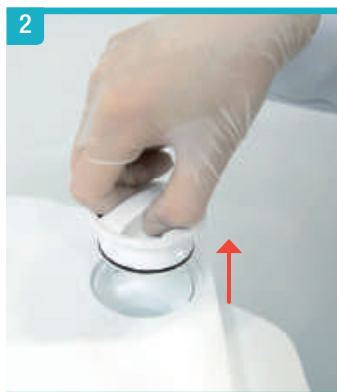
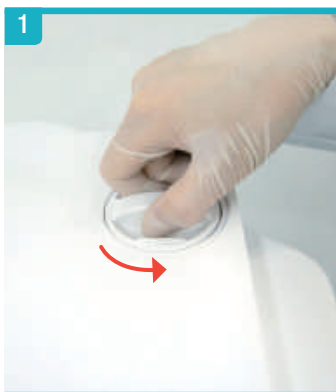
Turn the lid handle left to open and place an empty bottle or container below the VENT outlet.

Insert the Plastic Tube onto the VENT outlet and pour approximately 1 Liter of water into the filter until water exits the System.

Insert water slowly to prevent the filter from overflowing.

Press down the release button below the VENT outlet and remove the Plastic Tube. Turn the lid handle left to lock the tank.

*A clicking sound will occur when the Plastic Tube is inserted firmly onto both DRAIN and VENT outlets.



Assembly

2. Connecting Hand-pieces

Before connecting Hand-piece Cables to the Main Body, ensure that the System is turned OFF for safety purposes.

Hand-piece Cables (4x) connect on both left and right sides of the Main Body.

ELECTROPORATION and MICRO-CURRENT Hand-piece Cables connect to outlets on the left side of the Main Body with built-in Hand-piece Holders.

AQUAPEEL and COOLING/HEATING Hand-piece Cables connect to outlets on the right side of the Main Body with built-in Hand-piece Holders.

Left Side of Main Body



Right Side of Main Body



Assembly

AQUAPEEL

Slide the Hand-piece into its correct Hand-piece Holder where the AQUAPEEL function icon is labeled.

Connect the AQUAPEEL Hand-piece Cable in upside position to the Main Body (with the AQUAPEEL function icon labeled just above the outlet).

Align the Hand-piece Cable with its respective outlet to ensure a successful connection.



Assembly

COOLING/HEATING

Slide the Hand-piece into its correct Hand-piece Holder where the COOLING/HEATING function icon is labeled.

Connect the COOLING/HEATING Hand-piece Cable in upside position to the Main Body (with the COOLING/HEATING function icon labeled just above the outlet).

Align the Hand-piece Cable with its respective outlet to ensure a successful connection.



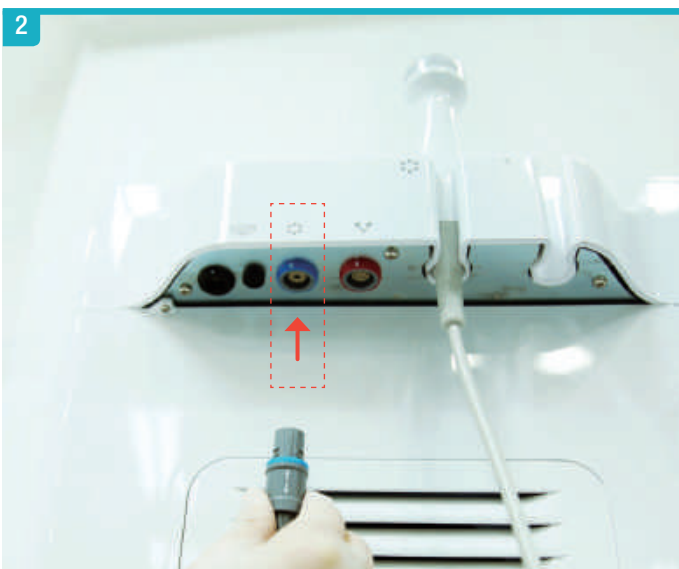
Assembly

ELECTROPORATION

Slide the Hand-piece into its correct Hand-piece Holder where the ELECTROPORATION function icon is labeled.

Connect the ELECTROPORATION Hand-piece Cable in upside position to the Main Body (with the ELECTROPORATION function icon labeled just above the outlet).

Align the Hand-piece Cable with its respective outlet to ensure a successful connection.



Assembly

MICRO-CURRENT

Slide the Hand-piece into its correct Hand-piece Holder where the MICRO-CURRENT function icon is labeled.

Connect the MICRO-CURRENT Hand-piece Cable in upside position to the Main Body (with the MICRO-CURRENT function icon labeled just above the outlet).

Align the Hand-piece Cable with its respective outlet to ensure a successful connection.



Assembly

3. Attaching Treatment Tips and Cleaning Cap

The AQUAPEEL Hand-piece treats the patient's skin with both small and large Treatment Tips.

The Hand-piece also conducts an AQUAPEEL cleaning procedure with a Cleaning Cap.

For successful attachment, push down Treatment Tips and Cleaning Cap firmly.



Assembly

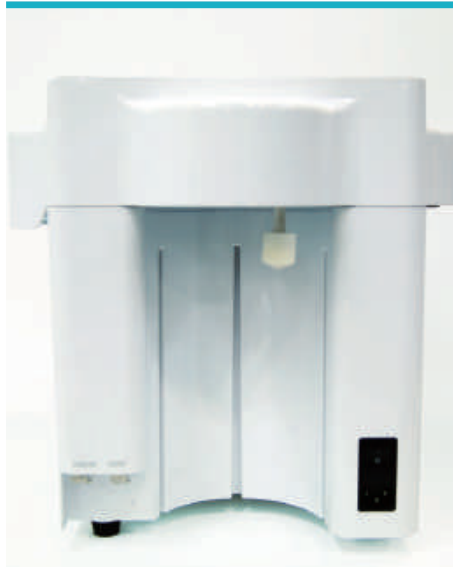
4. Connecting the Waste Container

The Waste Container receives wastewater following each AQUAPEEL procedure.

For successful connection to the rear of the Main Body, adjust the Waste Container in center position with the open slot.

After securing center position with the Main Body, hold the Waste Container up and turn right for it to fully lock into the System.

⚠ If the Waste Container is not securely locked, the suction capabilities of the AQUAPEEL Hand-piece will not work effectively.



Assembly

5. Connecting AQUASOLUTION Bottles

Receivers for attaching AQUASOLUTION bottles (4x) to the Main Body are located just below the AQUAPURE Graphical User Interface (GUI) with a tinted, plastic cover.

Uncap each AQUASOLUTION bottle one at a time and insert the tube into each bottle.

Align the bottle with the receiver of the Main Body and turn right for a firm insertion.

1. PEEL+
2. SEBO+
3. REJUVE+
4. CLEANSYS



Assembly

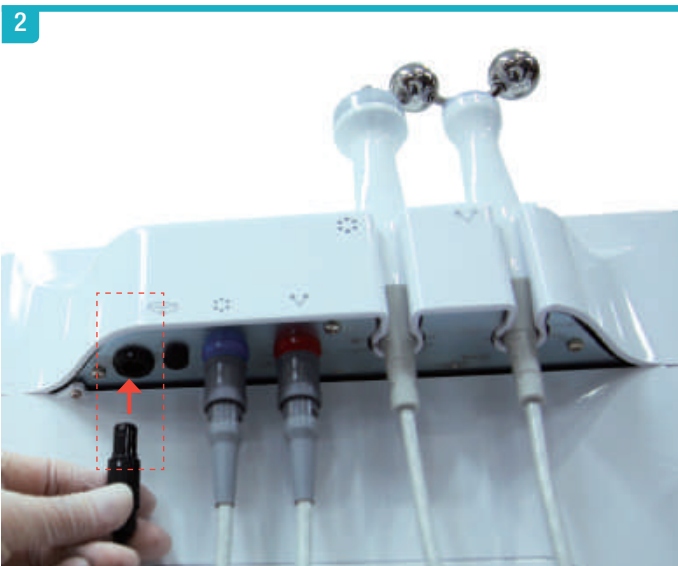
6. Connecting the Footswitch

The Footswitch is connected for both manual START and STANDBY for all AQUAPURE procedures.

The Footswitch outlet of the Main Body is located beside the ELECTROPORATION cable outlet.

Connect the Footswitch Cable in upside position (with the Footswitch function icon labeled just above the outlet).

Align the Hand-piece Cable with its respective outlet to ensure a successful connection.



Assembly

7. Turning the System ON

Before turning the System ON, ensure that there are no water spills or hazards present in the operating environment.

Connect the AC Power Cable to the outlet at the lower right rear of the Main Body.

Check that the AC Power Cable is firmly connected to the rear of the Main Body and to a grounded power source.

To activate the System, press the 'I' symbol on the AC Power Switch.



Assembly

8. Circulating Water into the System

Activate the AC Power Switch and turn the System ON.

Wait approximately 1 minute for water from the main tank of the Main Body to fill the COOLING/HEATING Hand-piece and Cable.

Turn the System OFF after 1 minute to prepare for additional water insertion.



Assembly

9. Inserting Additional Water

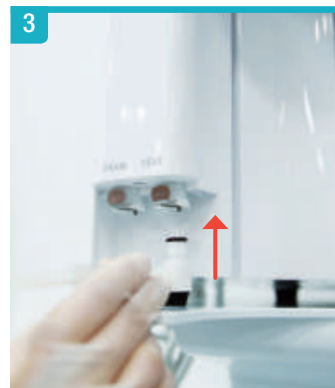
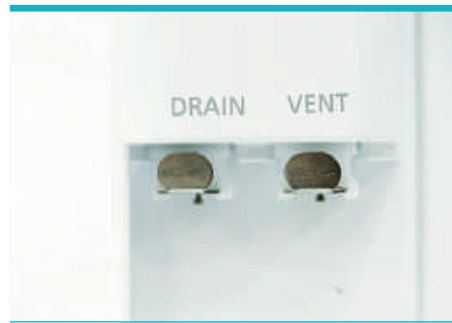
Before inserting water into the Main Body, ensure that the System is turned OFF for safety purposes.

Turn the lid handle left to open and place an empty bottle or container below the VENT outlet.

Insert a Plastic Tube onto the VENT outlet and pour approximately 200ml of water into the filter until water exits the System. Insert water slowly to prevent the filter from overflowing.

Press down the release button below the VENT outlet and remove the Plastic Tube. Turn the lid handle left to lock the tank.

*A clicking sound will occur when the Plastic Tube is inserted firmly onto both DRAIN and VENT outlets.





ASSEMBLY COMPLETE

For further guidelines and enquiries on the AQUAPURE System, refer to additional training materials for the proper and professional use of the AQUAPURE.

- Maintenance Guide
- Treatment Guide
- Quick Operation Guide
- Operation Manual

For further enquiries contact:
info@cluederm.com

AQUAPURE

DISASSEMBLY

The following content details instructions to disassemble the AQUAPURE Main Body.
Refer to these instructions in respective order for a successful disassembly of the AQUAPURE and its components.



Disassembly

1. Turning the System OFF

Before turning the System OFF, ensure that there are no water spills or hazards present in the operating environment.

To deactivate the System, press the 'O' symbol on the AC Power Switch.

Disconnect the AC Power Cable from the outlet at the lower right rear of the Main Body.

Proceed to disconnect the other end of the AC Power Cable from the grounded power source.



Disassembly

2. Draining Water

Place an empty bottle or container below the DRAIN outlet.

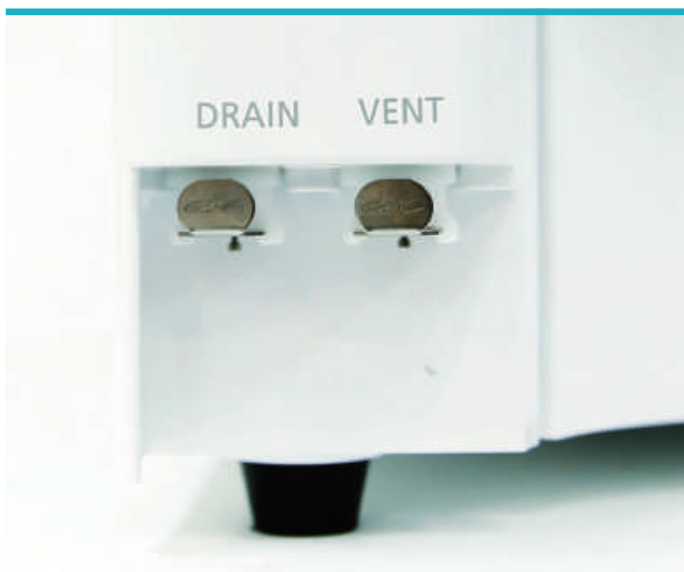
Check that the container placed below the outlet holds a capacity of more than 1 Liter of fluids.

Insert a Plastic Tube onto the DRAIN outlet for automatic drainage of water from the System.

Draining a full tank of water from the System takes approximately 1 minute.

Press down the release button located below the DRAIN outlet and remove the Plastic Tube.

*A clicking sound will occur when the Plastic Tube is inserted firmly onto both DRAIN and VENT outlets.



Disassembly

3. Detaching Treatment Tips and Cleaning Cap

For successful detachment, pull Treatment Tips and Cleaning Cap in a twist-and-pull motion. Store the Treatment Tips and Cleaning Cap in a safe and dust-free environment.



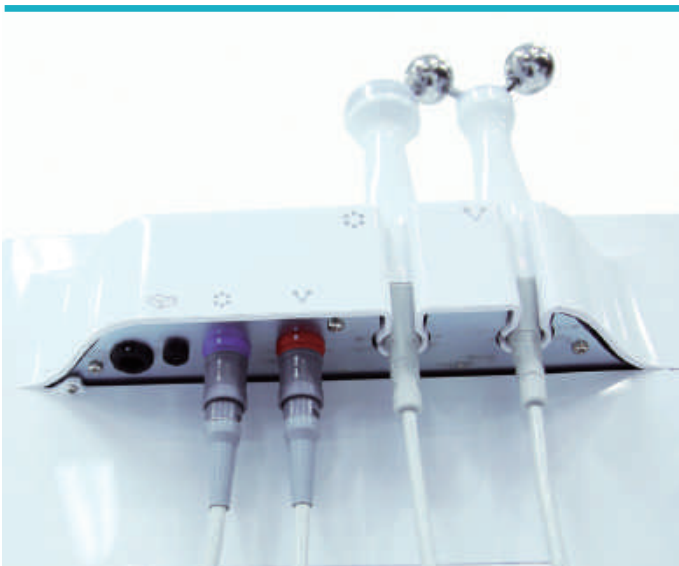
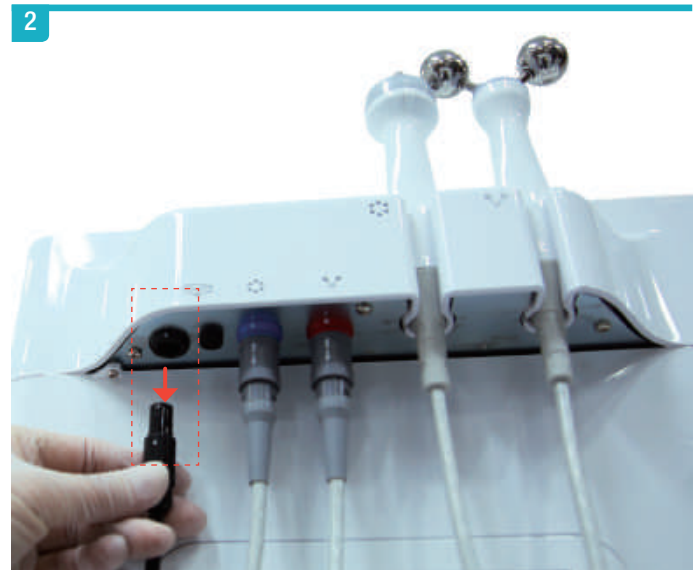
Disassembly

4. Disconnecting the Footswitch

The Footswitch Cable is connected alongside the Hand-piece outlets.

Disconnect the Footswitch Cable from the Main Body.

Ensure to keep all cables dry and untangled in a dust-free environment for storage.



Disassembly

5. Disconnecting Hand-pieces

There are 4 Hand-pieces which are attached to the Main Body.

Slide the Hand-pieces out of their respective Hand-piece Holders and proceed to disconnect the cables from the Main Body.

Ensure to keep all cables dry and untangled in a dust-free environment for storage.



Disassembly

6. Disconnecting the Waste Container

For successful disconnection of the Waste Container from the rear of the Main Body, turn the container handle to the left until it is at center position with the Main Body.

Gently lower the Waste Container to prevent wastewater from spilling.



Disassembly

7. Disconnecting AQUASOLUTION Bottles

Open the tinted, plastic cover of the Main Body. Turn each bottle to the left for proper disconnection. Slowly pull down the bottle as the tube can spatter if not removed with caution. Wipe down each tube with a clean cloth after it safely exits the bottle. Cover each AQUASOLUTION bottle with a cap after safe disconnection from the Main Body.





DISASSEMBLY COMPLETE

For further guidelines and enquiries on the AQUAPURE System, refer to additional training materials for the proper and professional use of the AQUAPURE.

- Maintenance Guide
- Treatment Guide
- Quick Operation Guide
- Operation Manual

For further enquiries contact:
info@cluederm.com

INSTALLATION GUIDE

Manufacturer CLASSYS Inc.
2F, Baekyoung Bldg., 546, Samseong-ro Gangnam-gu, Seoul, Rep. of Korea

Tel +82-2-517-2114 **Fax** +82-2-6008-3457

Website www.cluederm.com **E-mail** info@cluederm.com