

Quick guide

01

Loading screen

The loading screen
appears after the main
button on the device
is pressed.

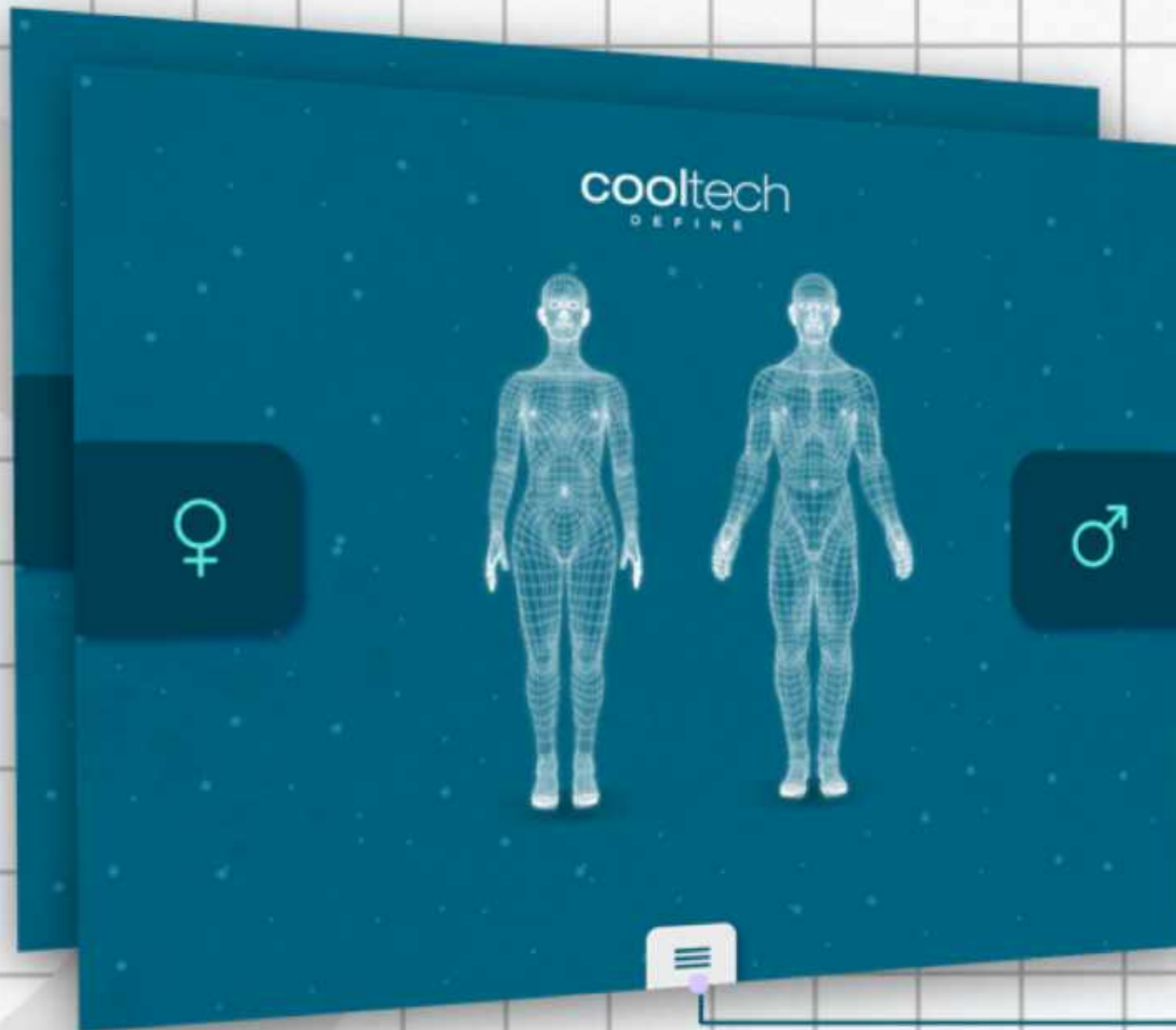




02

Home screen

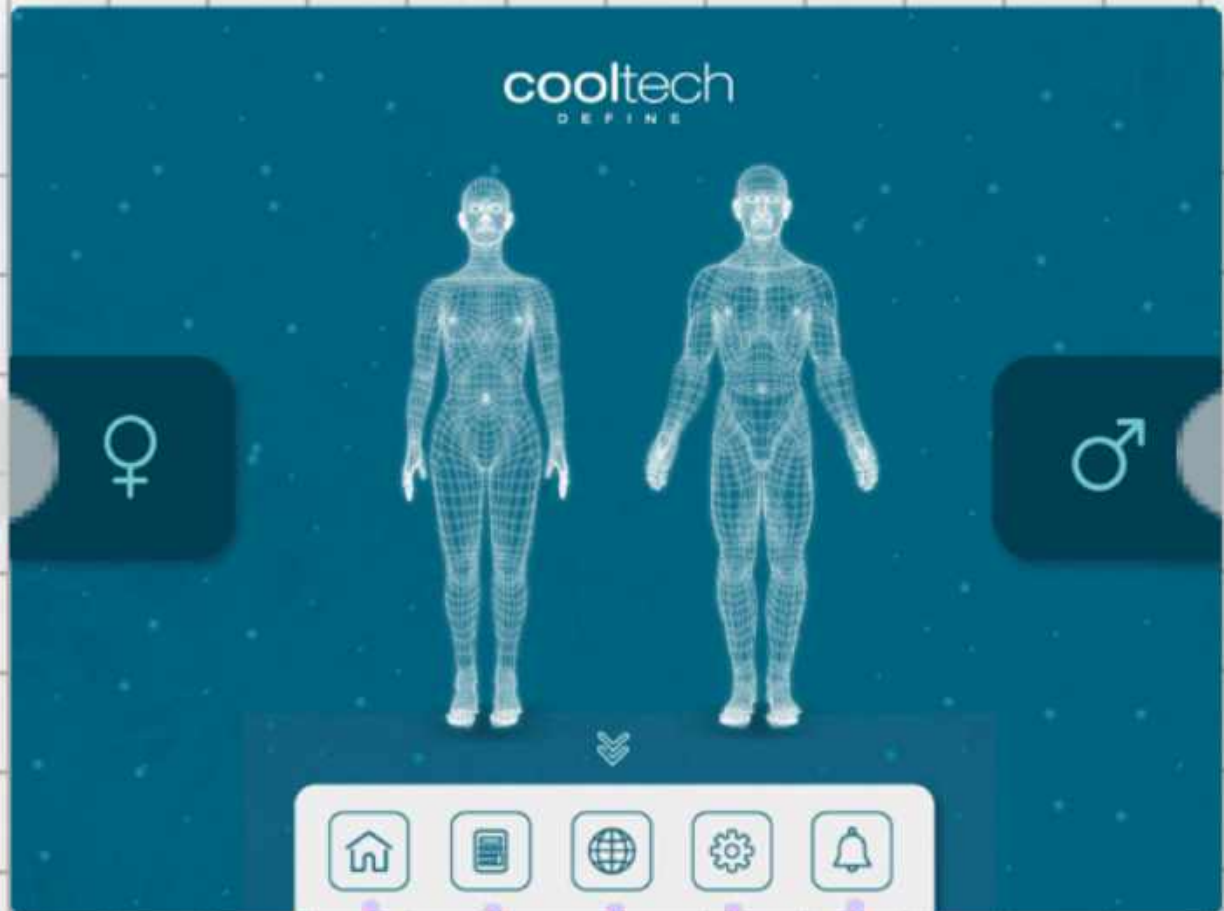
Once the device is turned on, it displays the home screen.



Press the menu button to open it.

+

Home screen



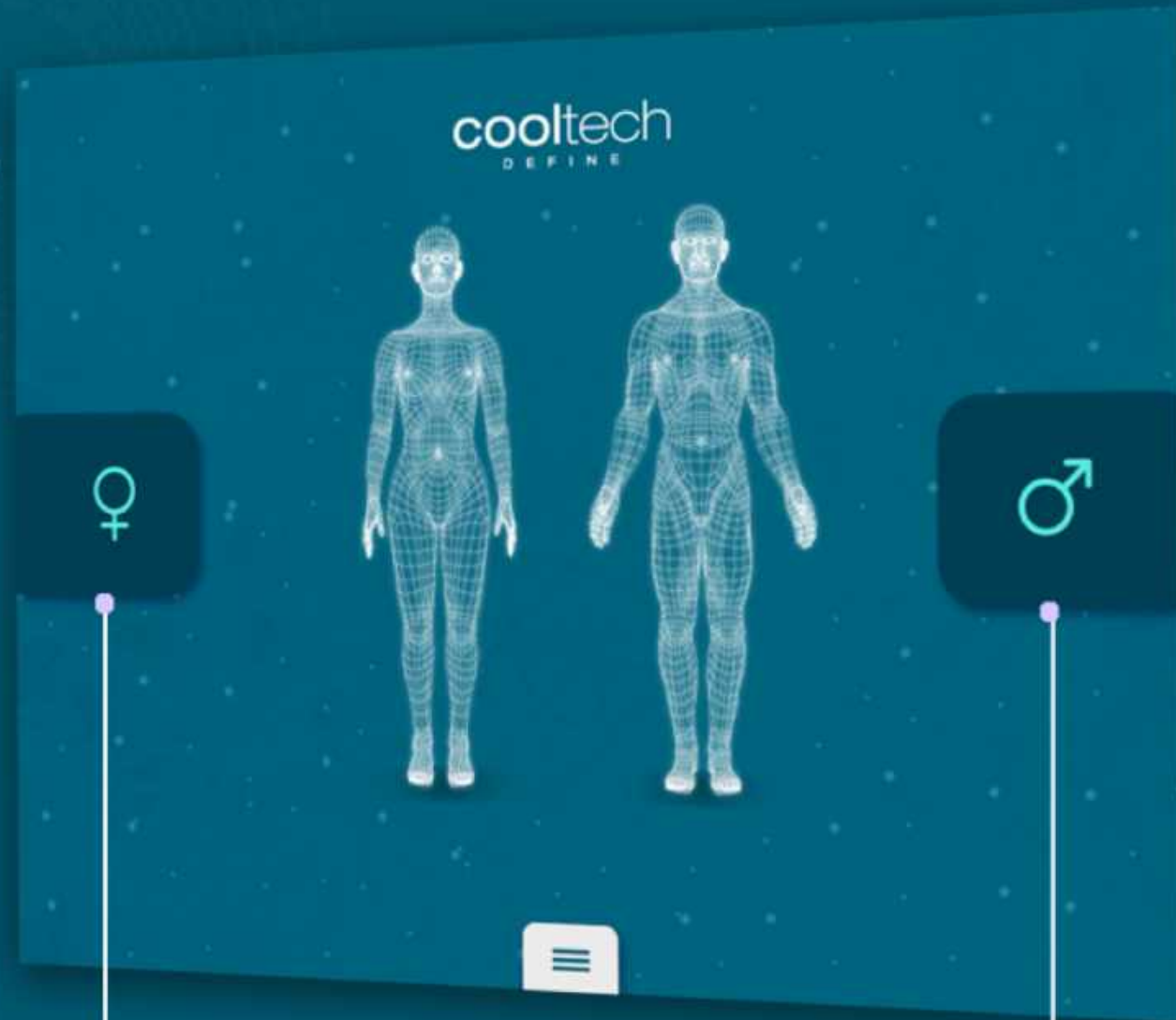
Gender button

Home Languages Warnings

Codes Configuration

Home screen

Gender button:
female and male
Select the gender
to access the
treatment screen.



Selection of the gender

Treatment screen

Upper left quadrant:
applicator connected
to **connector 1**.



Upper right quadrant:
applicator connected
to **connector 3**.

Lower left quadrant:
applicator connected
to **connector 2**.

Lower right quadrant:
applicator connected
to **connector 4**.



04

Auto cleaning

After connecting the applicators, the device will clean them one at a time.

Those that have not started the cleaning process will be on standby.

Cleaning the applicator

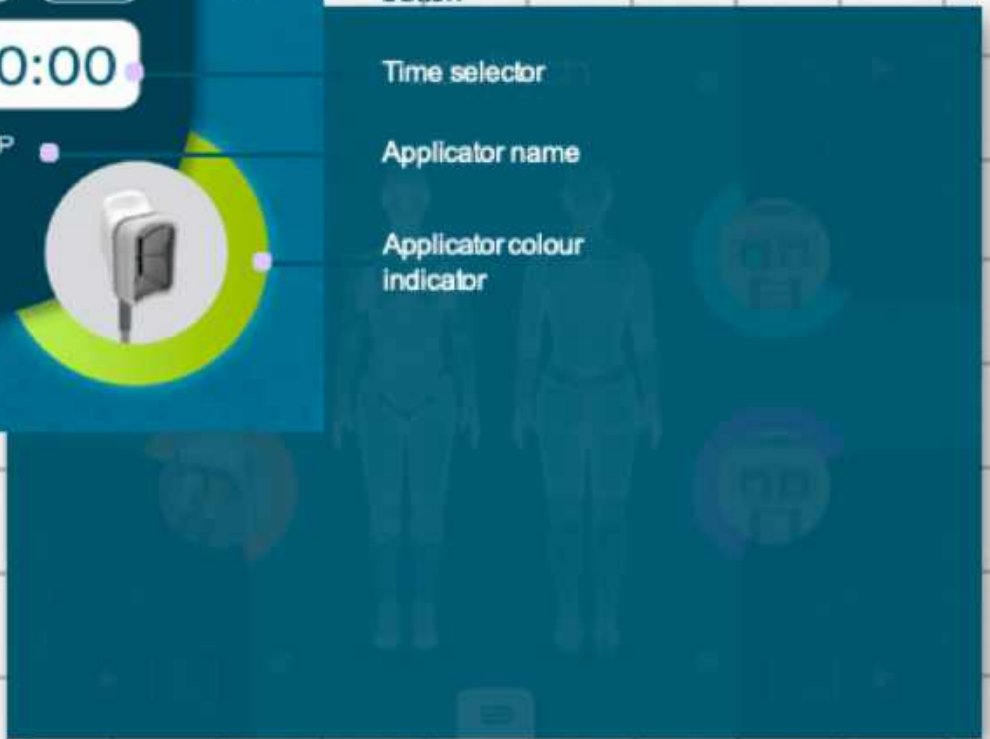




05

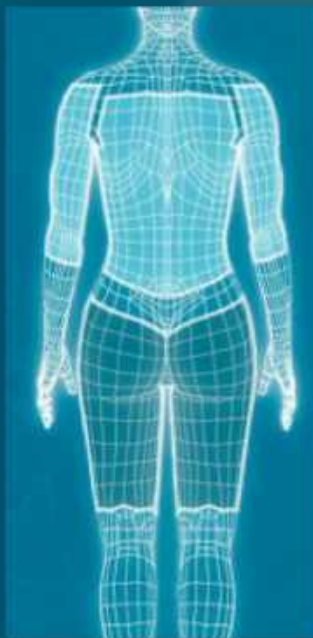
Applicator information

Once the cleaning is finished, the screen shows all the quadrants

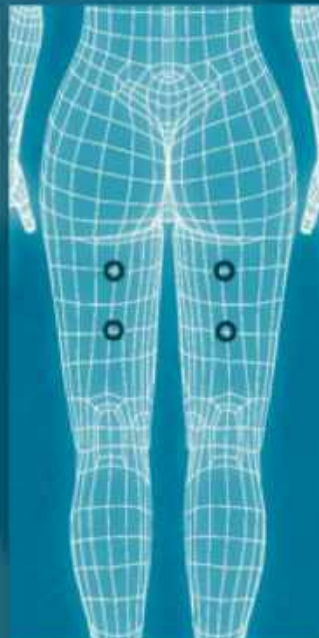




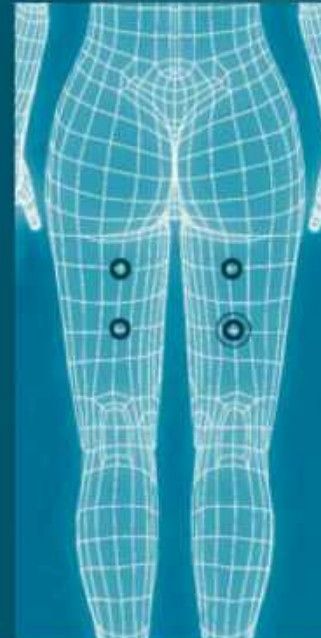
Select the treatment zone



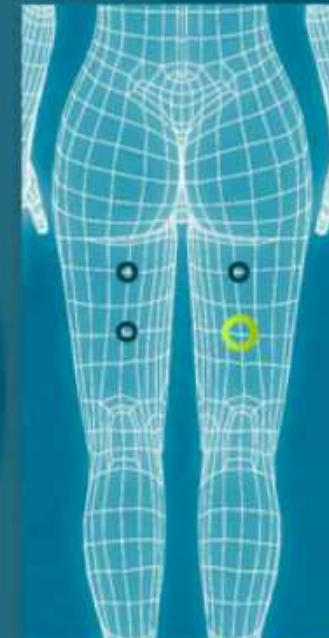
Select the treatment zone.



Select the treatment area.



Once the area is highlighted with the color applicator with which of the treatment will assigned to it. be performed.







Suction level and test selector



The machine comes with an easy pre-set suction mode which can fit the majority of patient's needs. A manual suction mode is also available according to your needs.

To change the pre-set suction level and start the treatment without doing a suction test, slide the suction level desired and press OK.

- To make the suction test Press the Test button of the suction level desired.





Start the suction test:
Press the button on top of the hand piece to initialize the suction test.



End the suction test:
To stop the suction you must press the button on the applicator twice and press OK

The suction level selected appears in the quadrant. If necessary, it can be changed after the treatment has begun, only four times during the first 5 minutes of the treatment. Press this button and select a new suction level.



+

Time selection

Select the treatment time* desired: 70 min or 50 min.

**note that for clinical reasons, treatments with Tiny hand pieces are limited to 45min.*



+



Play button

Once the parameters have been programmed, press the Play button.

10

RFID indicator

To activate the treatment:
place the RFID label of the
Cool Gel Pad for 2 seconds in
front of the RFID reader, loca-
ted on the side of the device.
Do not move the Cool Gel
Pad during this step.





11

Start the treatment

To start the treatment, press the button of the applicator once.



+

12

Suction of the treatment

When the treatment has started, the applicator will begin the suction.





+

13

Treatment ❄️

As soon as the treatment begins, the applicator cools down and the treatment time starts to run.



Insufficient suction

If the applicator is not well positioned, try to place it again.

The replacement of the applicators is only allowed in first **5 minutes** of treatment.



15



End of the treatment

When the treatment is over, the screen indicates to press the button on top of the applicator twice to release the suction.



16



16 Positioning the applicators

Place the applicators in the drip proof holders on the top of the device.



+

17

Final cleaning

The device will start automatically the internal cleaning of the applicators 1:20 after the end of the treatment.

To start this process before this time, press the button CLEAN.



The screen shows that the cleaning process has started

