

# CLATUU™

FREEZING FAT AWAY

## Maintenance Guide Ver 1.1



## Step 1. Hand-piece Replacement

- 1-1. Disconnect the Hand-piece from the Main body after simultaneously pressing the connector buttons on either side.



- 1-2. Press the connector buttons to align for proper insertion.
- 1-3. Align and match the connectors.
- 1-4. Connect the Hand-piece on the Main body. If connected correctly, a clicking sound will occur.

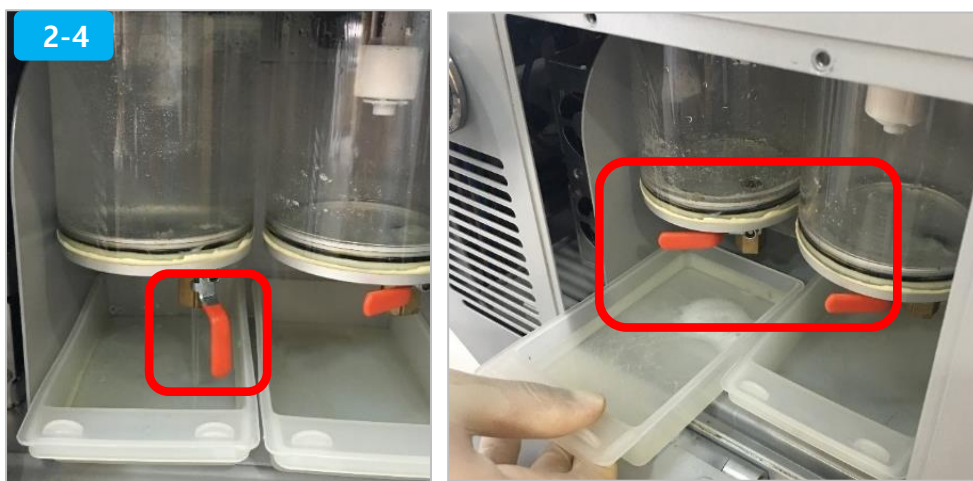


## Step 2. Oil Error

- 2-1. The error “Is filled with oil” is displayed on the screen.
- 2-2. Proceed to open the gel storage tank cover.
- 2-3. Pull down the lever to drain the gel from the gel storage tank.

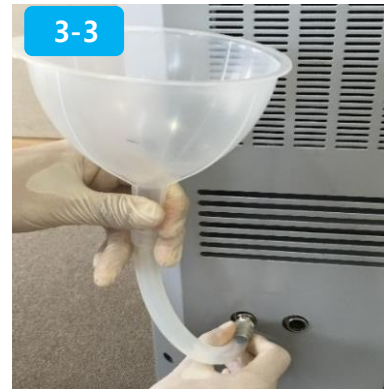
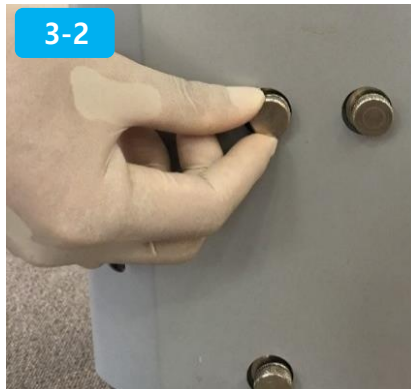
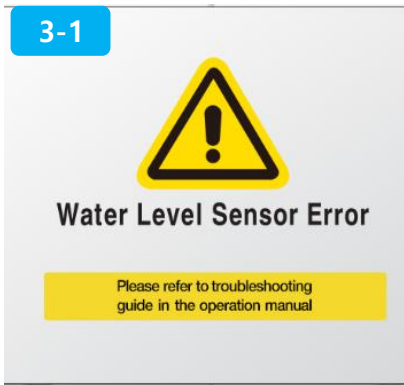


- 2-4. Drain the gel from the storage tank and empty the container before replacing it in its original position.

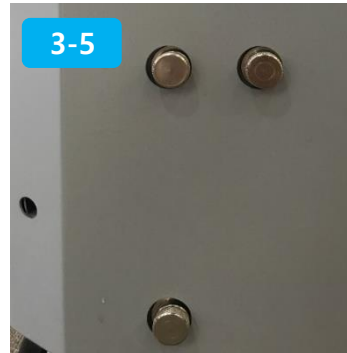
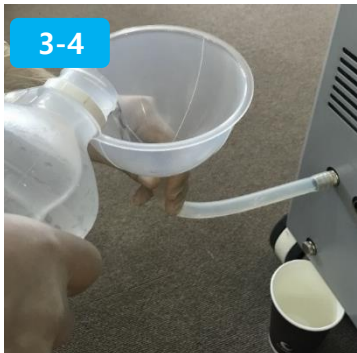


### Step 3. Water Level Sensor Error

- 3-1 The error “Water Level Sensor Error” is displayed on the screen.
- 3-2 Proceed to release both port lids.
- 3-3 Insert the funnel into the Main body port.

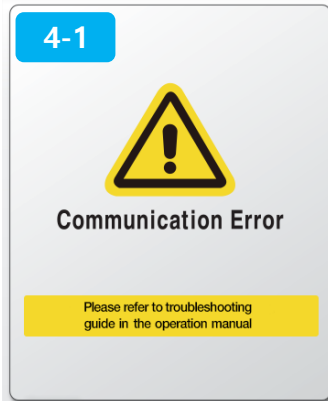


- 3-4 Pour distilled water through the funnel until the distilled water exits from outlet port.
- 3-5 Proceed to close both the port lids.



## Step 4. Communication Error

- 4-1 The error “Communication Error” is displayed on the screen.
- 4-2 Reconnect the Hand-piece. (Refer Step 1.Hand-piece Replacement)



## Step 5. Draining the gel from the Hand-piece cord

- 5-1 Set the parameters to the following. (Massage : 0, Cooling : 0, Suction : 1 )
- 5-2 Proceed to open the gel storage tank cover.
- 5-3 Hold the button “STANDBY” on the Hand-piece to operate the CLATUU.



- 5-4 Pour 30mL of warm water into the Hand-piece.
- 5-5 The water will filter the gel in the Hand-piece cords.
- 5-6 Drain the gel from the storage tank and empty the container before replacing it in its original position.

