

Ufit

New Industry Standard of
Face Lifting & Body Contouring System



Ultimately Slim
Beyond Limits

Table of Contents

Maintenance Procedures

- Cleaning the Main Body and Hand-pieces
- Changing Cartridges
- Inspecting the Body Cartridge

Precautions

- Precautions for an Idle System
- Turning the System OFF as a Precautionary Measure
- Precautions for Cables
- Precaution for the Body Cartridge
- Removing the ULFIT Hand-pieces
- Proper Placement of Hand-pieces

Troubleshooting

- Standard Troubleshooting Procedures
- Troubleshooting Chart

Maintenance Procedures

Cleaning the Main Body and Hand-pieces

When cleaning the ULFIT and its components, ensure that the System is turned OFF and disconnected from a power source for safety purposes.

Main Body

- Apply 50-70% isopropyl alcohol on a soft cloth and proceed to clean.
- Wipe the smudges and any dirt from the exterior.
- Do not allow any liquid to seep into the equipment. (Recommended every 2 weeks)

Hand-pieces

- Check that the window of both the Face and Body Cartridges have no remaining ultrasound gel residue after cleaning the Hand-pieces.
- As both the Face and Body Hand-pieces directly contact the skin, the standard practice for cleaning and sterilizing the Hand-pieces between treatments is to thoroughly wipe them with a standard 50-70% isopropyl alcohol prep pad.
- Clean and dry the window surface of both Cartridges with care to ensure no physical damage is incurred.

*Hand-pieces should not be submerged in liquid at any time.



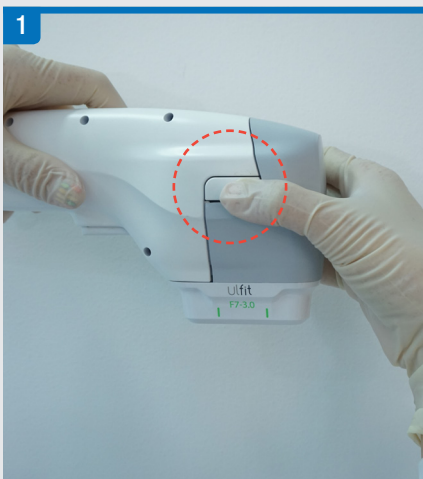
Maintenance Procedures

Changing Cartridges

Face Cartridge

For successful connection of the Cartridge to the Face Hand-piece, align both components and proceed to connect. A clicking sound should occur once the Cartridge and Hand-piece are connected properly.

For successful disconnection, press down on the buttons located on both sides of the Hand-piece and remove the Cartridge.



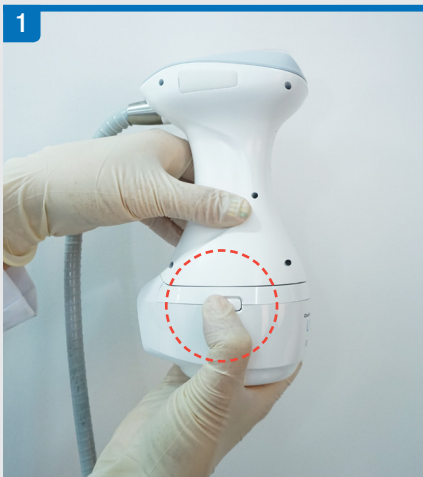
Maintenance Procedures

Changing Cartridges

Body Cartridge

For successful connection of the Cartridge to the Body Hand-piece, align both components and proceed to connect. A clicking sound should occur once the Cartridge and Hand-piece are connected properly.

For successful disconnection, press down on the buttons located on both sides of the Hand-piece and remove the Cartridge.



Maintenance Procedures

Inspecting the Body Cartridge

If the transducer of the Body Cartridge is not making a complete or successful rotation during either a test shot or treatment, it may have been exposed to positive or negative air pressure. To resolve this issue, perform the following precautionary measures:

- Observe whether the surface window is visibly bulging outward or pushing inwards as the transducer may be in direct contact with the surface window.
- Place the Hand-piece with the pin hole of the Cartridge facing upwards and insert a metal pin into the hole to release or insert air pressure out of or into the Cartridge.

Conduct another test shot to observe whether the transducer is rotating properly.

Inspect the Body Cartridge on a frequent basis to ensure safe and effective treatments with the ULFIT.

⚠ If the metal pin is inserted into the opening when the pin hole is NOT facing upwards, water may leak out of the Cartridge and enter the cooling fan causing it to short-circuit.



Precautions

Precautions for an Idle System

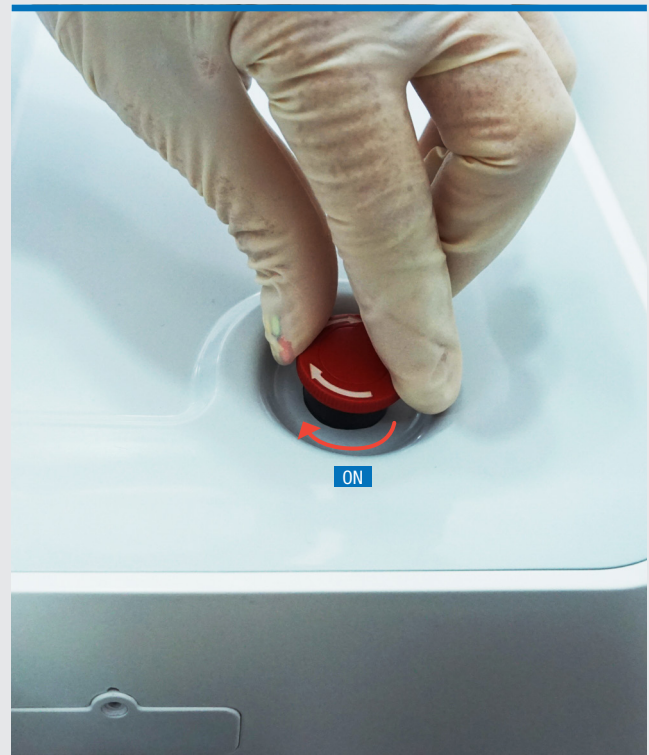
If the System has been active or idle for extensive periods of time, the System may require some precautionary measures:

- If either the Face or Body Cartridge has been used for more than 30 consecutive minutes, allow 10-15 minutes for the Cartridge to cool down.
- For an idle System, store the Main Body in a cool and dry environment of approximately 25°C without direct exposure to sunlight.

If an error occurs with either the Face or Body Hand-piece or within the ULFIT System during treatment, perform the following procedures:

- While the AC Power Switch is ON, press down on the Emergency Switch located on top of the Main Body to deactivate the System. To reactivate the device, turn the Emergency Switch right to its original placement.

*The Emergency Switch is intended to activate or deactivate the ULFIT System even when the AC Power Switch at the rear of the Main Body stays ON.



Precautions

Turning the System OFF as a Precautionary Measure

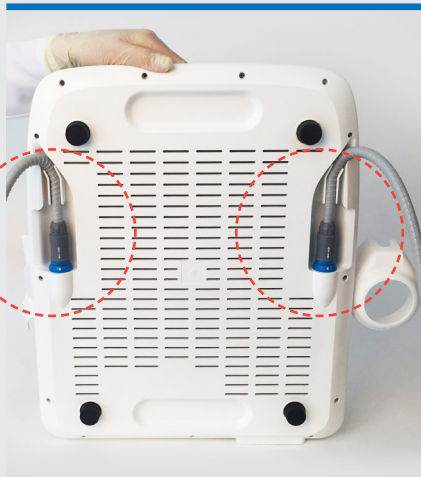
Turn off the device as a precaution for the following procedures:

- Insertion or removal of Face or Body Hand-pieces, Cartridges, or other components to and from the System
- Moving the device from one location to another



Precautions for Cables

- Ensure that Face and Body Hand-piece Cables are not entangled to avoid safety hazards from occurring.
- To prevent the Hand-piece Cables from tangling, insert the cables from near the end of the outlets to the Slot Holders located underneath both Hand-piece Holders.



Precautions

Precaution for the Body Cartridge

When performing treatment procedures with the Body Cartridge, refer to the following precautionary measures:

- Ensure that an excessive amount of ultrasound gel is not used as it may enter the rear of the Cartridge and damage the cooling fan.
- To prevent possible injury and damage to the Cartridge from using an excessive amount of ultrasound gel during treatment, clean and sterilize the Body Hand-piece between treatments by thoroughly wiping them with a standard 50-70% isopropyl alcohol prep pad.



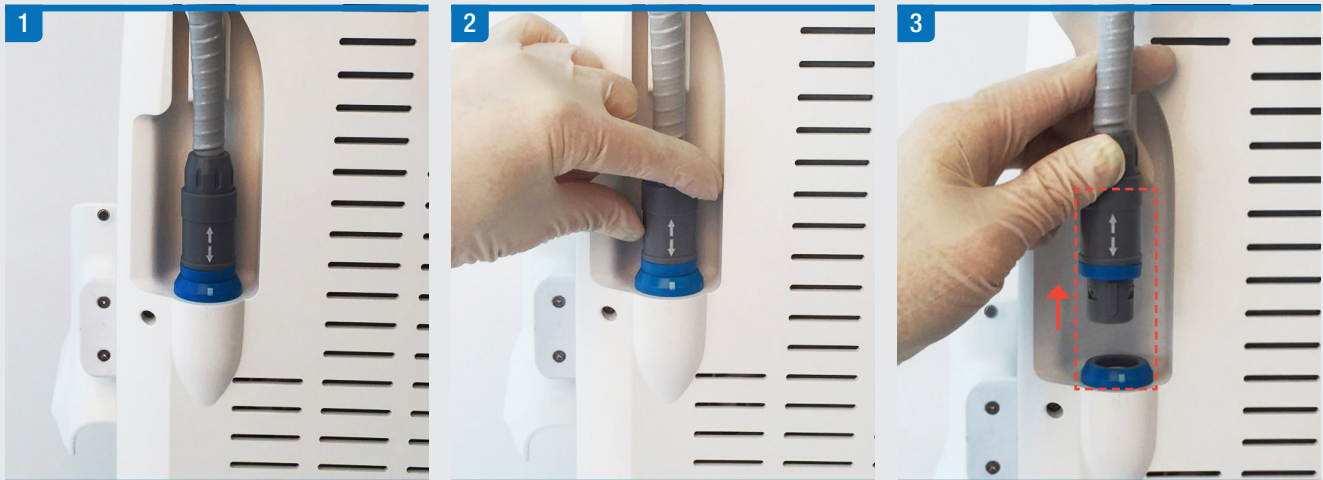
Precautions

Removing the ULFIT Hand-pieces

When removing the ULFIT Face and Body Hand-piece Cables from outlets of the Main Body, check that the System is turned OFF and disconnected from a power source for safety purposes.

- Lift the Main Body from the rear right-side up and remove the cables inserted into each Slot Holder.
- Disconnect the Hand-piece Cables from outlets located on the right and left sides of the Main Body.

Face Hand-piece Cable



Body Hand-piece Cable

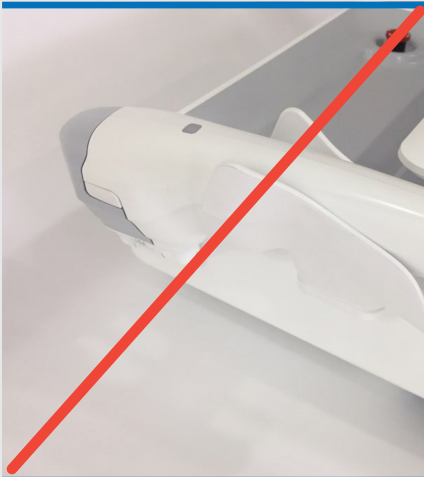


Precautions

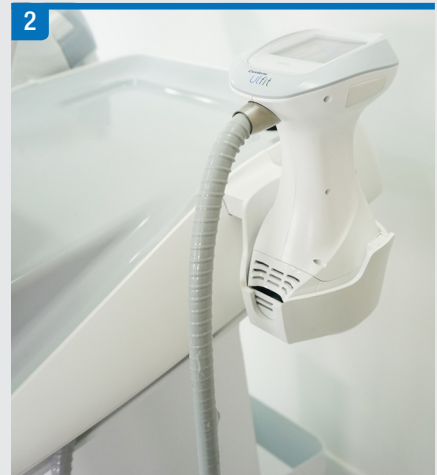
Proper Placement of Hand-pieces

- Inserting the Hand-piece directly into the Hand-piece Holder may result in the Hand-piece being dropped during treatment or when moving the Main Body.
 - Slide the Hand-piece Cable down through the Slot Holder until the Hand-piece fits firmly into the open Hand-piece Holder.
- *Insert the Hand-piece into the Hand-piece Holder properly for the Automatic Hand-piece Recognition to function accordingly.

Face Hand-piece



Body Hand-piece



Troubleshooting

Standard Troubleshooting Procedures

The ULFIT is designed with internal checks to ensure that all aspects of the equipment are functioning accordingly. Refer to the troubleshooting chart in this section when system errors occur.



Example of an error occurring on the Graphical User Interface

Troubleshooting

Troubleshooting Chart

No.	Error Message	Description & Corrective Action
1	 Check HP-CF	Error in resetting Cartridge calibration has been detected. <ol style="list-style-type: none">1. Check that the Cartridge is properly connected to the Hand-piece.2. Reconnect the Cartridge to the Hand-piece.3. Turn the System OFF and restart.4. If the problem persists, please contact your local distributor or CLUEDERM representative.
2	 Check HP-MS	Malfunction of the motor motion in the Hand-piece has been detected. <ol style="list-style-type: none">1. Check that the Cartridge is properly connected to the Hand-piece.2. Reconnect the Cartridge to the Hand-piece.3. Turn the System OFF and restart.4. If the problem persists, please contact your local distributor or CLUEDERM representative.
3	 System error - F1	Malfunction of the fan rotation in the Main Body has been detected. <ol style="list-style-type: none">1. Turn the System OFF and restart.2. If the problem persists, please contact your local distributor or CLUEDERM representative.
4	 System error - NC	Error in connection between the Hand-piece and Main Body has been detected. <ol style="list-style-type: none">1. Check that the Hand-piece is properly connected to the Main Body.2. Reconnect the Hand-piece to the Main Body.3. Turn the System OFF and restart.4. If the problem persists, please contact your local distributor or CLUEDERM representative.
5	 System error - EC	Malfunction of the hardware in the Main Body has been detected. <ol style="list-style-type: none">1. Turn the System OFF and restart.2. If the problem persists, please contact your local distributor or CLUEDERM representative.

MAINTENANCE GUIDE

Manufacturer CLASSYS Inc.
2F, Baekyoung Bldg., 546, Samseong-ro Gangnam-gu, Seoul, Rep. of Korea
Tel +82-2-517-2114 **Fax** +82-2-6008-3457
Website www.cluederm.com **E-mail** info@cluederm.com